

FREE

PARADISE GROVE
SPRING TRAIL

Spring Watch in Paradise is the first of four events for 2023.

EASTBOURNE
CARNIVAL 2023

The 2023 Carnival is fast approaching. Be part of it.

04/23

Issue 034
April 2023

Page 14

Pages 18-19

Bournefree



www.bournefreelive.co.uk

need print?

THINK
CUSTARD

01323
430303

instant@custard-design.co.uk

Lightning Fibre
Hyperfast Broadband

FULL FIBRE
BROADBAND

SPEEDS UP TO
1,000Mbps

01323 380 260 | www.LightningFibre.co.uk

since 1982 **Jürgen Matthes**
Student Organisation

**WE REQUIRE HOST FAMILIES
AND TEACHERS.** See page 6
matthes.uk/newfamily | matthes.uk/newteacher



A delightful blend of TED, comedy & Radio 4. Sort of.

WHEN? 2nd Wednesday, every month
Doors open 7pm

TICKETS £12 www.bavardbar.co.uk
www.towner.gallery/bavardbar



For breaking news 24/7, log onto our news website at
www.bournefreelive.co.uk



Peter Lindsey, Editor.

Contacts

Email: andy@bournefreemag.co.uk
 Telephone: 01323 430303

Editor

Peter Lindsey
 Email: pete@bournefreemag.co.uk

Advertising

Email: gail@bournefreemag.co.uk
 Telephone: 01323 430303

Email: harry@bournefreemag.co.uk
 Telephone: 07809 443027

Production

Custard Design, Eastbourne
 Email: artwork@bournefreemag.co.uk
 Telephone: 01323 430303

Images

Inner cover: Jurgen Matthes.
 Eastbourne: Mike Rowley.
 The Arts: Yasaman Khajehali.

Our next edition will be distributed from May 28th. Make sure you are a part of it.

custard
 DESIGN MARKETING PRINT

ignite
 PR & Engagement

Bournefree is booming!

WELL, this is a bumper month for *Bournefree Magazine*, both online and in print.

By **Peter Lindsey**

We are feeling very optimistic moving forward as we become more and more popular.

First, the magazine. The April edition is 72 bumper pages – and to be honest we could potentially done more such is the current demand.

Inside is a special feature very close to our hearts – The Very Best of Eastbourne.

This idea came from a recent *Sunday Times* article applauding Eastbourne for everything positive we have to offer.

We thought it would be a great idea to feature many of the positives as well – so inside includes spotlights on some amazing businesses.

Some advertise monthly, some are with us for the very first time. Thanks to them all.

It's great to see the *Hippodrome Theatre* reopen after three months of sheer hard work by the team, and huge investment in improvements across the iconic venue.

The reopening night was full – with a waiting list – and now they need support from the town on a regular basis. Alex, Debbie and co are doing a great job and deserve the backing of the people of Eastbourne.

It's also been a pleasure this month working with *St Wilfrid's Hospice*. It goes without saying what a wonderful service it provides, full of dedicated and caring people.

It's a real delight to have the four-page WRAP on this issue focused on such a wonderful charity.



Online, and we're going great guns there as well.

There are six stories uploaded onto our *bournefreelive* website daily, seven days a week.

Plus of course our social media, and in particular our *Facebook* page, which last month reached more than 75,000 people. Not bad indeed.

Onwards and upwards we go. we are proud to be supporting *Eastbourne Carnival* once again – what a great event that is for Eastbourne.

And *The People's Choice Awards* continue to receive hundreds of nominations which is really positive.

Here's to a great month ahead as well for us all!

Bournefree

Bournefree is becoming more and more popular each month, and we want to make it easier for you to promote your business or organisation.

Gail and Harry are here to help you with your marketing and to raise awareness of what you do.



gail@bournefreemag.co.uk
 01323 430303



harry@bournefreemag.co.uk
 07809 443027

Every care has been taken to ensure that the information in this magazine is correct. Neither the publisher, Bourne Free Publications Limited, nor contributors can take responsibility for loss or damage resulting from errors or omissions. Bourne Free Publications Limited does not endorse the accuracy of the advertisements or the quality of the products/services being advertised.

Information provided by businesses and community organisations are provided directly by their own representatives. Please direct any queries or comments regarding content directly to the organisation.

Copyright © 2023. Bourne Free Publications Limited. All rights reserved. No part of this magazine may be reproduced in part or whole without express permission of the editor.

50 years of the Bluebell Walk

THE iconic Arlington Bluebell Walk is preparing to open for its landmark 50th season in April.

By **Peter Lindsey**

And owner John McCutchan is hoping for record numbers in what is a very special year for him personally and also his talented and devoted team.

The most visitors in any one year was 23,000 in 2019 – and John is confident this can be beaten this year.

Very special year

He said: “Being our 50th anniversary makes it a very special year indeed on the *Arlington Bluebell Walk*.”

“We will be open daily for four weeks from April 11th until May 10th, and of course supporting local charities is at the heart of what we do.

“There will be 19 charities managing the walks and providing the refreshments, and they will each receive a substantial donation from the overall proceeds.”

Bates Green Garden

This garden is very special to John. Carolyn his late wife created the most wonderful garden around the Farmhouse, which has been renovated since her death and for

the first time has been honoured to be a *Royal Horticultural Society Partner Garden 2023*.

Listen to the birds

John wanted to do something extra special for the 50th anniversary.

He said: “We have created a bird feeding station and we will be using a large screen to beam it into the catering area.

“What could be better than having a cup of tea listening to the birds? It will be so lovely.

“We aim to make improvements every year, and this year we are making 18 mobility scooters available. Back in 2019, they were used 500 times so I am confident this will be popular.

Catering boost

“We also have an excellent new catering team on site, which will give us a real boost too.”

It all started back in 1972 when John’s family decided to open the farm for one weekend.

John said: “We were asked whether we would do a second year and we said, ‘no, of course not, we are farmers.’



“A committee was set up and it went on from there. I guess the rest is history.

Supporting charities

“Over the years we have raised £890,291 for local charities. That was always so important to Carolyn and myself.”

The garden is an attraction in itself, 1.5 acres adjacent to a six-acre wildflower meadow with mown paths, seating and views of the South Downs.

John said: “After my wife died, Emma Reece and her team have done an amazing job renovating it.

“It is so tranquil, relaxing and very good for one’s mental health.”

Opening times

The garden is open every Wednesday from 10am until 4pm, also every day the *Bluebell Walk* is open.

The Bluebell Walk runs daily from 10am until 5pm between April 11th and May 10th.

Entrance is £6 per adult, £3 for children aged between 3 and 16, and £16 for a family ticket, two adults and up to four children.

You do not need to book online – you can turn up on the day.

Go to www.bluebellwalk.co.uk or email info@bluebellwalk.co.uk also www.batesgreengarden.co.uk for garden details.



Laureate's library tour

THE UK Poet Laureate, Simon Armitage, visited Eastbourne Library in March, as part of the new leg of a tour of the nation's libraries.

By **Gail McKay**

Simon's views on public libraries are well known. "The very existence of the library system is under threat, but libraries still stand at the heart of many communities."

For his 10 year term, Simon has been visiting libraries each Spring, alphabetically. This year is E–G.

The tour is partly an homage to the spaces that gave him so much, and partly to highlight the importance of these spaces in our busy lives.

Invaluable

Simon says, "For many people they are an invaluable aspect of everyday life, not just to books, but



to services, learning. Conversation and creative thinking."

Simon is a natural performer, he comes across quite reserved, yet he is dry, precise with language, and very funny and he kept the audience spellbound with his amusing anecdotes and poems.

His poetry style is described as colloquial with an acute eye for modern life. Like most people during the lockdowns, he questioned his role.

Public role

"Public readings are part of my role as poet. But lockdown meant this wasn't possible.

I became writer in residence of my own office. I was experiencing an artistic claustrophobia."

His literary response to his enforced isolation lead to three poems about his velux windows.

Velux heard about his poems and invited him onto their podcast where he discussed his feelings towards these roof windows at length.

'Let's Bird Table'

His poems reflect all life, from the Apprentice, 'Let's Bird Table', to trees, birds and nature, to mourning,

adolescence and astronauts. The evening was a tour of the poet's fervent mind. Subjects jumped from his teaching, his walk along the Pennines and his South West Coastal walk. Hilariously, he describes a petition to stop a cemetery being built in his village. He couldn't put his name to it as they had spelled cemetery wrong.

Simon's shed

The role of Poet Laureate means he is called upon to write for royal occasions, so the last few years have kept him busy. In his series on *Radio 4*, he interviews writers, artists and performers from his shed in his garden in Yorkshire, a proper shed complete with tools and spiders. When he interviewed King Charles, in 2021, this interview was conducted in HRH's own 'shed' at his Welsh home, *Llwynywermod*.

As well as flagship venues like the British Library, the tour has taken him to a mobile library in the Outer Hebrides where he did a reading in someone's kitchen.

His *Radio 4* shows are still on *BBC iPlayer* and you can borrow his books in your local library.

Eastbourne Library, Grove Road, BN21 4TL



since 1982 
Jürgen Matthes
Student Organisation

WE REQUIRE HOST FAMILIES

for German students in all parts of
Eastbourne, Westham,
Polegate and Hailsham
(up to 4 students per family)

We also require **TEACHERS** for our students

**APPLY
HERE**

HOST FAMILIES: matthes.uk/newfamily/
TEACHER: matthes.uk/newteacher/
OR PLEASE RING **EB 744020**

Supporting the community

LIGHTNING Fibre is delighted to renew its sponsorship of *The More Radio Breakfast show* for Eastbourne and Hastings for another year (2023–24).

By **Peter Lindsey**

It was also proud to sponsor the Eastbourne Mayor's charities and Ball, which raised £11,000 last month.

Ben Ferriman, CEO of *Lightning Fibre* said, "Eastbourne Mencap

and *Eastbourne Foodbank* play a vital role in our community. The Mayor's Ball brings businesses and individuals together to raise much needed funds as well as raising awareness of these two amazing local charities."





Lightning Fibre

**EASTBOURNE!
FULL FIBRE BROADBAND
IS HERE**

Register Today!

We're a local business, building a brand new hyper fast and hyper reliable broadband network throughout the region providing the whole town with 100% Full Fibre



01323 380 260 | ask@LightningFibre.co.uk | www.LightningFibre.co.uk



New space for charity

AN Eastbourne charity has opened its new office in the town centre.

By **Peter Lindsey**

Holding Space, a volunteer-led organisation that supports families, parents and children across East Sussex struggling with their mental health, can now be found at 7 Hyde Gardens.

Chief Executive Hansa Raja-Jones officially opened the offices with

the support of Eastbourne Mayor Cllr Pat Rodohan. More than 50 supporters, volunteers and clients joined the celebrations.

Reaching more people

Hansa told the audience: "When I set up the charity in 2019, I had a dream of bringing our services into the centre of town to reach more people struggling with mental health and to raise our profile.

"Our new office in the heart of the town is perfect and ticks all the boxes. I would like to thank our Trustees and volunteers who have made this possible."



The need for mental health support and guidance has grown significantly in the wake of Covid, lockdown and the current cost-of-living crisis.

Connecting

Its fundamental aim is to connect marginalised parents and children facing mental health issues with the wider community so that they do not feel alone and isolated; parenting a child with an illness is hard enough but there is an added burden with mental illness.

"We are helping to end the stigma around mental health and normalise the conversations by empowering and educating the community to better manage their own mental health and those around them." Hansa continued.

Go to www.holdingspace.org.uk



Helping to keep the lid on energy costs!

With soaring energy bills why not replace your existing polycarbonate or glass conservatory roof with a **new tiled and insulated roof** and save money on keeping your conservatory cosy this winter.

Call now for a free, no obligation quote on **01323 844944**

solid conservatory roofs Ltd
33 South Street, Eastbourne, East Sussex BN21 4UP
www.solidconroofs.co.uk info@solidconroofs.co.uk
Telephone: 01323 844944

www.solidconroofs.co.uk **01323 844944**



Take part in the 2023 Lighthouse Challenge

THE annual *Beachy Head Lighthouse Challenge* fundraising walk will take place this year on Saturday 20th May.

By **Peter Lindsey**

For those who have not previously undertaken the Challenge, it essentially involves a walk to and around the *Beachy Head Lighthouse* and then back, in exchange for a modest entry fee which is donated to local charities.

This is only possible on certain days

of the year and has proved very popular with at least 1,000 walkers taking part each year.

Each participant receives a commemorative certificate at the finish.

It is organised by *Eastbourne AM Rotary Club*.

Rotarian Martin Wellings said: "This event has grown massively since its first year back in 2013.

"The purpose then was to raise money to repaint the *Beachy Head Lighthouse* at a cost of some £30,000.

Iconic stripes

"Had this not been undertaken, the iconic red and white stripes would have been allowed to fade and eventually disappear.

"Due to the popularity of the event, we have continued to organise the Challenge every year since, with the help of volunteers."

Full information can be found at: www.eastbourneam.org

Be energy efficient this Spring, save money!



Vispera T143ULTRA 43" 4K UHD
Smart Freeview HD TV

£299.00

Tower T17089 Vortex 5l
Digital Air Fryer

£69.99



Hoover HLEH8A2TE 8kg
Heat Pump Tumble Dryer - White

£399.00



Davis
TV · HiFi · Home Appliances



34A Church Street, Old Town, Eastbourne, East Sussex BN21 1HS 01323 733279 www.davistv.co.uk
Call into our showroom located on the A259 in Old Town, Eastbourne, for a demonstration of the latest technology from all the top brands, with **FREE CAR PARKING OPPOSITE THE SHOP**

Easter fun on the Farm



A LEADING East Sussex visitor attraction is gearing up for what it hopes will be a bumper Easter.

By **Peter Lindsey**

Sharnfold Farm – situated at Stone Cross between Eastbourne and Hailsham – is staging a magical Easter extravaganza between April 1st and April 16th.

It includes an Easter Egg Hunt on its Farm Trail, FREE Easter themed magic show, and the chance to see baby lambs and chicks as well as its usual farm animals. There are also bunnies.

Exciting Easter event

Donna Bull from *Sharnfold* said: “We are very excited about our Easter event. They have proven to be very popular in previous years and this year we are set for a record footfall.

“Winter has ended and we are looking forward to Easter and the summer months with great optimism.

“We are hoping for a bumper Easter – come and join in the fun between April 1st and 16th.

“If you are looking for something to keep the little ones entertained during the Easter school holidays, then look no further.”

The Easter Egg hunt is easy to take part in – you’ll be given your activity sheet and map upon check in.

Walk the trail, find the eggs and reveal the code word to redeem your sweet treat and to be entered into their Easter hamper prize draw.

The magic show in the barn is available from April 3rd to 6th and then from the

11th to 14th. You must book a time slot for this in advance online. The tickets will say the time slot but they will be valid for entrance to the rest of the farm on that date between 9am and 5pm.

Times of the magic show are 11am, noon, 1.45pm and 2.45pm.

Tickets are £4.95 per person; a booking fee applies and under 2s are free.

To book, go to:

<https://www.sharnfoldfarm.co.uk/easter-farm-trail-event>

Watsons News in the Beacon

The number one shop in Sussex for
American Candy
US Cereals
Japanese Drinks
Best prices in Sussex
Rare US Candy



Unit 46 The Beacon Eastbourne BN21 3NW

..... the **BIG** **FUTURES** **SHOW** **2023**

25 APRIL

EASTBOURNE SPORTS PARK,
CROSS LEVELS WAY, BN21 2UF

9:30AM - 4:00PM

By **Tim Sorensen**

The BIG Futures Show returns to Eastbourne Sports Park on Tuesday 25th April 2023 from 9.30am–4.00pm.

The show is the largest employability, skills and jobs event in the area and is aimed at students (aged 14+) from across East Sussex as well as parents, carers and anyone looking for work or training.

The Show is organised by *Eastbourne Education Business Partnership*, a registered charity, in association with *Eastbourne Borough Council*. 90 organisations will be providing interactive exhibits and guidance aimed at inspiring tomorrow's workforce.

Visitors will receive a comprehensive 32pp show guide to help them make the most of their visit. It is recognised that parents and carers play a significant role and influence in a young person's choice of future career and are welcome to attend throughout the day.

Exhibitors will be looking for new talent and explaining what qualifications they require and what training and apprenticeships they offer in the work place. Colleges and other training providers will be on hand to promote their offer and where it fits with employer's requirements and what they are seeking from students who apply.

A wide range of employment sectors and individual organisations will be represented at the show as listed in the stand and floor plan details shown opposite. The organisers are grateful for sponsorship from *East Sussex Healthcare NHS Trust*, *Bexhill 6th Form College*, *Edwards Vacuum*, *East Sussex College*, *Recruitment South East* and *Wave Leisure Trust* plus support from *CloudConnX*, *CCLI*, *Lightning Fibre*, *Carrot Festivals & Events* and *Soren Learning Solutions*.

A dedicated job-seekers area, managed by *Recruitment South East*, will be promoting current job and training opportunities with show exhibitors for those seeking a more immediate choice. Entry on the day is £3 inclusive of show guide (or free with *DWP/People Matter/ESCC Library* voucher).

hello@bigfuturesshow.org.uk

07890 388624

BigFuturesShow

@BIGFuturesShow

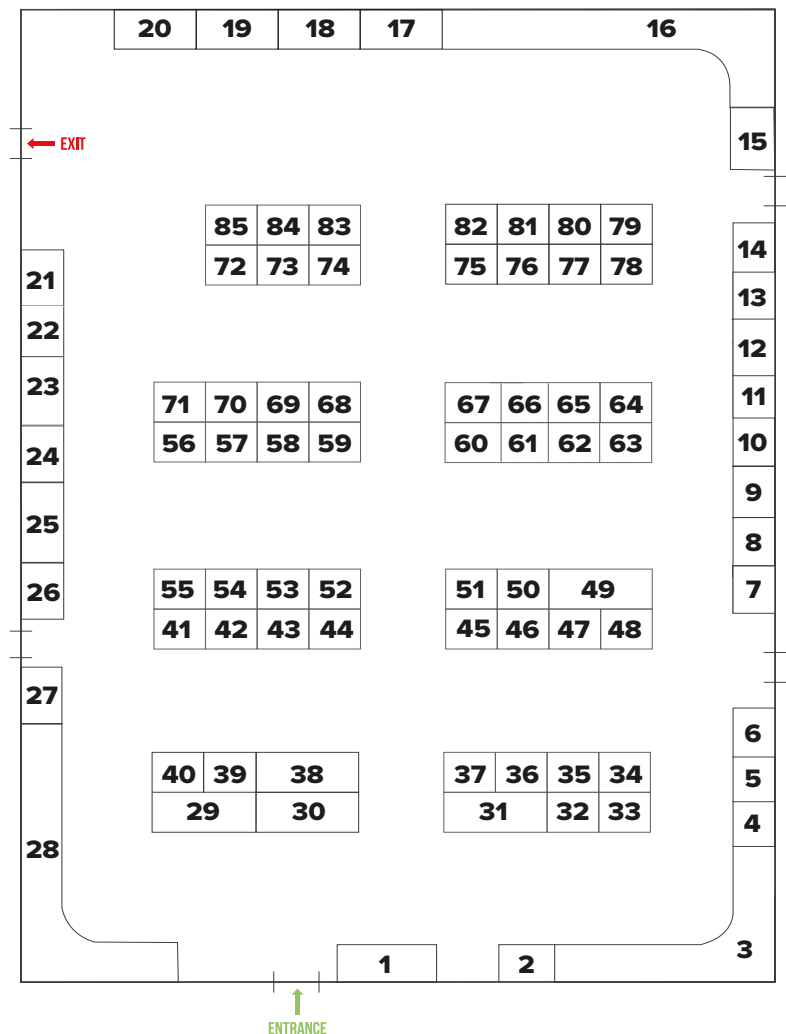
#BIGFS2023



www.bigfuturesshow.org.uk



EXHIBITOR	STAND NO.	EXHIBITOR	STAND NO.
Information Desk	1	South Downs National Park Authority	44
Recruitment South East	2	Lansdowne Hotel	45
Job-Seekers Corner	3	Mears Group	46
Department for Work & Pensions/Jobcentre Plus	4	FTA Global	47
The People Matter Trust	5	St Wilfrid's Hospice	48
East Sussex County Council	6	East Sussex Healthcare NHS Trust	49
CXK National Careers Service	7	University Hospitals Sussex NHS Foundation Trust	50
Creative Force	8	Logistics UK	51
East Sussex Library & Information Service	9	Eastbourne & District Samaritans	52
The Kurt J Lesker Company	10	Idverde	53
Plumpton College	11	Firebrand – Brand Design Agency	54
Travelosophers by Gareth Harding	12	Cleankill Pest Control	55
Clarke Roofing Southern	13	AFH Payroll Solutions	56
Stagecoach South East	14	HR Dept Sussex-by-the-Sea	56
DFN Project Search	15	JTL	57
East Sussex College	16	Towner Eastbourne	58
British Army	17	Talent Accelerator	58
Viking Pump Hygienic	18	Mayo Wynne Baxter LLP	59
OHM Energy	19	Brighter Horizons Training	60
The Southfield Trust	20	Group 1 Hailsham BMW & Mini	61
The Girls Network	21	Thakeham	62
SIGTA	22	University of Brighton	63
Wave Leisure	23	RateMyApprenticeship	64
M-Tech Systems	24	East Sussex Fire & Rescue Service	65
Sunninghill Construction	25	Royal Air Force	66
Cheesmur Building Contractors	25	Chalk Eastbourne	67
Westridge Construction	25	CXK Youth Employability Service	68
Willingdon Park Manor Care Home	26	Southern Water	69
Business Travel Association	27	CPJ Field – Haine & Son	70
Bexhill 6th Form College	28	Wealden Works	71
Visit Eastbourne	29	Custard/Bournefree	72
Lewes & Eastbourne Councils – Service Delivery	30	Water Bear The Music College	73
Edwards Vacuum	31	Children with Cancer Fund	74
Ditzy Media	32	General Dynamics UK	75
AdasGold Photography	33	MRL Consulting Group	76
WS Work Savvy	34	Plastic Free Eastbourne	77
Wightman & Parrish	35	SCTP, Apprenticeships-in-Sussex & ASK	78
Stageworks Studios	36	Royal Navy	79
Lightning Fibre	37	Sussex Housing & Care	80
Partners 4 Training	38	The View Hotel Eastbourne	81
Holding Space	39	Chestnut Tree House	82
Mini First Aid Sussex	40	The Observatory Science Centre	83
Heathercroft Training Agency	41	Dominic Hill Associates	84
Metro Bank	42	University Hospitals Sussex NHS Foundation Trust	85
DV8 Sussex 16-18 Creative College	43	Carrot Festivals & Events	REC



Exciting new annual event for Eastbourne



Lewes event.

THIS summer sees the launch of the *Rotary Club of Eastbourne* annual skittles tournament.

By **Peter Lindsey**

It's not just one event, it's five as each evening between Monday 3rd and Friday 7th July will be run as individual events, with trophies awarded to the winners each night.

Each team consists of six players each rolling three wooden balls at the skittles and will play against two other teams.

It's very similar to tenpin bowling but there are nine skittles.

Cost of Entry is £30 per team (£5 per player).

The event will be held on the Saffrons all-weather hockey pitch so the balls will run smoothly.

Beer and spirits will be sold in the pavilion and there will be food available from a mobile vendor.

This copies a similar event which has been held successfully in Lewes for a number of years.

We hope that this will be the first of many in Eastbourne.

For further information contact Geoff Fitch at the *Rotary Club of Eastbourne*: geoffrey@gmx.com

Rotary
Club of Eastbourne



furniturenow!
LOW COST FURNITURE

Your local charity furniture store
Open 6 days a week
Mon - Sat 9am - 4:30pm

Furniture Now! is your local reuse charity, providing high-quality, low-cost new and reused household furniture and appliances

From sofas and dining sets to washing machines and fridge-freezers, we are committed to finding the perfect item for you at an affordable price.



Donations Welcome!

Scan the QR code to book a collection or visit:
furniturenow.org.uk/book-a-furniture-collection



Furniture Now, 9 High Street, Hailsham,
East Sussex, BN27 1AL



01323 846 899



Furniture Now, 3A Courtlands Road,
Eastbourne, East Sussex, BN22 8TR



01323 638 000

CASH OR AUCTION

in Association with Eastbourne Auctions Your Local Saleroom with the International Reputation

Bring items along for a **FREE Friendly Advice**
CASH OFFER or entry into our forthcoming Auction
To book an appointment or use the Royal Mail **FREE** postal service
call Rosie on **01323 431444** option 2-1-1



Sold for
£14,500



Sold for
£5,200



Sold for
£3,250



Sold for
£3,000



Stamps
Sold for
£2,500



Book
Sold for
£1,750



Sold for
£1,700



Cigars
Sold for
£1,550



Coin
Sold for
£1,000



Sold for
£800

Valuations are
FREE in 2023

Items Wanted

- Gold and Silver Jewellery in any condition
- Costume Jewellery • Watches working or not
- Coins and Medals • Wines & Spirits
- Oriental items – even when chipped or damaged
- Wines & Spirits • Antiques & Collectables
- Records • Any quirky items



Sponsoring
the weather

Eastbourne Auctions

www.eastbourneauction.com

Auction House, Finmere Road, Eastbourne BN22 8QL



FULL Probate and House Clearance Service in Operation

Paradise Grove Spring Trail

SPRING Watch in Paradise is the first of four events for 2023.

By **Gail McKay**

The events are all seasonally themed, highlighting the wildlife and human enjoyment to be found along the southern spur of Pashley Down, and what we can do to enhance them.

Discover *Paradise Grove*, Eastbourne's newest planting of trees at the foot of Pashley Down in Meads.

Eastbourne's Green Canopy team invite you to join them on a two-mile spring walk starting at *Paradise Grove*. The route will take walkers along an ancient droving track that rises 165 metres above sea level to Warren Hill dew pond. Here there are stunning views to be enjoyed of Eastbourne's iconic downs and coastline.

This special event provides an opportunity to learn about the flora and fauna found alongside the track.

Walkers will also find out how this section of Eastbourne's downland is managed and what is being done to replace the dead or dying Ash trees affected by a devastating fungal disease. This gentle morning walk will also reveal some fascinating archaeological secrets along the route.

Spring Watch at Paradise will be led by local natural historians including Ralph Lucas and members of the *Eastbourne Green Canopy* team. Useful kit to bring with you but not essential are gloves and secateurs if you have them and a notepad and pencil.

There will be a cake sale on the day (with donations going to *The Eastbourne Canopy Project*). Bring your own flask of coffee or tea.

The grid reference for the start of the walk is TV59.98. There is free car parking in the vicinity of the Paradise Road, Link Road junction, Meads Eastbourne.



Luca Albertoli, Proprietor of Pomodoro E Mozzarella, planting sponsored trees.

To reserve your place please visit: www.eventbrite.com and search for **Paradise Grove**

Friends and supporters of the *Eastbourne Green Canopy* project include: *Seeds for Kids, Treebourne, 3VA, Eastbourne Borough Council, The Eastbourne Society, The Changing Chalk Project, The Eastbourne Downland Group, Friends of Meads, the Coastal Schools Partnership and the Eastbourne Local History Society.*

Saturday 22nd April 2023, 10:00am – 12:00pm

GAROLLA ★ PREMIUM
Increased Security • Double Insulation
One-Touch Close

PRICED EXAMPLE £895
COMPACT • UP TO 2.4M

FREE FITTING
PAYMENT ON INSTALLATION

PRICED EXAMPLE £1,990
PREMIUM • 3.4M • ANTHRACITE

PRICED EXAMPLE £2,740
PREMIUM • 5.1M • BLACK

Improve, Don't Move! Maximise the value of your home.

- **SPACE-SAVING - MAXIMISE YOUR GARAGE HEADROOM**
- **SECURITY-ENABLED AUTO-LOCKING SYSTEM**
- **CHOICE OF 21 COLOURS TO MATCH YOUR HOME**
- **REMOVAL AND RECYCLING OF YOUR OLD DOOR**
- **DEDICATED AFTER-CARE TEAM**

GAROLLA
ROLLER SHUTTER DOORS

01323 800 116

LINES OPEN 7 DAYS A WEEK

www.garolla.co.uk

BESPOKE
ELECTRIC DOORS
MANUFACTURED
IN THE UK



ECK

Bookkeeping and Accounts Ltd.

Finding yourself buried under a pile of paperwork?

We can help you to free up your invaluable time to work on your business whilst we handle the finances.

We specialise in providing a full bookkeeping service to Sole traders, small and medium sized businesses with a personal touch, swapping dull, repetitive meetings for individualised and informal discussions

We can also provide payroll services including Auto enrolment and Self assessment Tax returns.

We can also file your CIS returns



www.eckbookkeeping.co.uk

admin@eckbookkeeping.co.uk

01323 348 480



Elizabeth Kelly is licensed and regulated by AAT under licence number 2000993.

Eastbourne Foodbank works to reduce council tax pressures for those on lowest incomes

EASTBOURNE Foodbank has welcomed Wealden District Council's decision to give residents on low incomes 100 per cent reduction on their council tax and has been urging Eastbourne Borough Council to do the same.

By **Juliet Mead**

Wealden District Council introduced greater discounts on council tax at its full council meeting on February 22nd. Wealden joins Lewes District Council in providing this support for residents on low incomes.

Further support needed to ease pressures

Eastbourne Foodbank, which has seen a huge increase in clients during the cost of living crisis, says this will make a big difference to families who are currently unable to afford to buy food and pay essential bills.

Jess Holliday, campaigns and communications manager at Eastbourne Foodbank, said: "We are delighted to hear Wealden District Council is joining Lewes District Council in giving those

on low incomes a 100 per cent council tax reduction. It is great to see our local authorities working to support vulnerable people in our communities through this challenging cost of living crisis."

However, the majority of Eastbourne Foodbank's clients live within Eastbourne Borough Council's boundaries and this authority is billing residents on low incomes 20 per cent of their council tax. The council in Eastbourne is also currently chasing historic council tax debt and using bailiffs to try and recoup unpaid bills.

Eastbourne Foodbank has a team of welfare benefits and debt advisers, which help its clients to maximize their incomes. In 2022, 58 per cent of the debt Eastbourne Foodbank managed included council tax debt. The charity's welfare benefits team completed 62 successful council tax reduction claims with foodbank clients who hadn't realised they were eligible.



In 2022, the charity's campaigns team asked Eastbourne Borough Council to implement a 100 per cent council tax reduction scheme. The local authority said it was not able to commit to such a scheme and would continue to give an 80 per cent discount to residents on low incomes in the 2023/2024 financial year.

Calling for an end to bailiff action

The foodbank is also calling for an end to bailiff enforcement for all those in receipt of 80 per cent council tax reduction.

Jess said: "We know council tax causes a lot of issues for our clients. With rising food and energy prices, so many are struggling to pay their essential bills at the moment. Council tax of £50 or more, if left unpaid, can escalate very quickly causing further debt and bailiff action."

At the last full council meeting, held at Eastbourne Town Hall on February 22nd, Cllr Alan Shuttleworth spoke about helping Eastbourne households on low incomes.

At that meeting, he said: "I want to just touch upon an area which I want us to focus on which is about moving into an analysis of going to 100 per cent council tax rebate scheme because I think going in to the new year that is one of many areas we need to put more focus on and I hope by doing that we can help more people. With the 80 per cent relief at the moment, we already help something like 4,000 working aged residents in the town."

Holding hope for future change

Eastbourne Borough Council says it will hold a public consultation over a 100 per cent council tax reduction scheme.


Jess said: "We were pleased to hear Cllr Shuttleworth advocating a move towards the analysis of a 100 per cent council tax reduction scheme in Eastbourne for the 2024/2025 financial year. At Eastbourne Foodbank we strongly support such a scheme and we have shared this view with Eastbourne Borough Council. However, people are struggling to afford essentials right now and we were disappointed to hear our local authority was unable to commit to such a proposal for this current financial year.

"We are grateful for the opportunity to work with Eastbourne Borough Council and remain hopeful that a 100 per cent council tax reduction scheme will be implemented in 2024/2025 to ease the pressures faced by people living in poverty."

February Statistics

(People receiving three days' emergency food between Feb 1, 2023 to Feb 28, 2023)

 **Adults 1,983**  **Children 1,091**

 **Meals – 30,740**

Percentage increase on the previous year: **42%**

<https://eastbourne.foodbank.org.uk>

Bede's Prep win Our King In-Bloom



PUPILS from *Parkland Junior, Parkland Infant, Bede's Prep, Shinewater and The Haven* schools presented their carpet garden designs at the 'Our King In-Bloom' finals at *Eastbourne Town Hall* on Friday 10th March.

By **Tim Sorensen**

This annual In-Bloom event, now celebrating 29 years, was organised by *Eastbourne Education Business Partnership* in association with *Eastbourne Borough Council*.

Local primary schools were tasked with producing three themed carpet garden designs and some supporting curriculum work for judging.

The competition theme enabled pupils to learn more about our new King and the royal family as well as plans for the coronation in May. The competition also provided lots of ideas for learning

and creativity in the classroom and wider community. The finals coincided with the start of British Science Week.

Cllr Candy Vaughan, Deputy Mayor, said afterwards, "I was very impressed by the work that the schools had done. Judging the different entries from each school was very hard. Congratulations to *Bede's Prep School* for their distinctive design that will be planted at Holywell in June and *Parkland Infants* who were runners-up".

"We are very grateful for the opportunity to contribute a carpet garden design

for the town once again. The standard of designs from the schools was as high as always", commented Faiza Shafeek from *Carrot Festivals & Events* and chair of *Eastbourne EBP*.

Representatives from *Idverde, UpCountry Stone Cross* and *Visit Eastbourne* helped with judging. Winner's prizes were kindly provided by *UpCountry Stone Cross* and *Eastbourne EBP* and certificates provided by *Firebrand Design*. Celebration cakes for tea were provided by *Idverde* who look after the seafront carpet gardens and parks.

Unit 5, 60a Ashford Square,
Eastbourne, East Sussex BN21 3TX

FREE

No obligation home survey and measuring service.
No pressure selling techniques.
You phone us if you wish to proceed.

Let our reviews speak for themselves!

New Carpets

I am full of admiration for the way your fitters did their work. All the carpets are a great success - not forgetting the carpenter and his excellent work!

Mrs. B
Eastbourne

Carpet cleaning

The carpets at St. Marys Road have come up very well and we are extremely pleased with the result. By the way, the agent asked if we had bought new carpets for the house!

Mr. O - Eastbourne

The Carpet
& Flooring **people**

**CARPET & FLOORING HOME
SELECTION SERVICE**

01323 646628

thecarpetpeep@gmail.com

www.thecarpetandflooringpeople.com



NEXT DAY DELIVERY

FLEXIBLE DELIVERY SLOTS

DISCONNECTION

INSTALLATION

RECYCLING OF OLD APPLIANCE

FREE DELIVERY INSTALLATION REMOVAL

ON THE MAJORITY OF GOODS AT DB DOMESTICS

- ★ We have over 2000 appliances to choose from, so pop into our store to discuss your options and get a feel for which product is really right for you.
- ★ We pride ourselves on a high level of service. We offer expert industry knowledge to help you make your purchase and a genuine aftersales service to support you locally if a problem does arise.
- ★ If you don't require installation and recycling then no problem. Call us and we will always aim to **price match** on a like for like service basis!



SHOP LOCAL TO SUPPORT EASTBOURNE

SECURE LOCAL JOBS

And not only in the shops themselves; shop owners regularly work with local tradesmen, suppliers, accountants and agencies, further supporting an entire local commercial eco-system.

GET BETTER SERVICE

When you shop locally, the people who serve you are just like you and there's nothing better than a friendly face who knows what's going on in the world directly around you.

GET A BETTER PRICE

You don't always get a better deal online. Leading online retailers can charge up to an extra £115 to have a freestanding washing machine delivered and fitted. Often this cancels out any money saved on the product.

SEE, TOUCH, FEEL

Ever purchased something online and it didn't turn out as expected? Going to a local shop means you can see what you're buying before you commit. You can also easily come back to a local supplier, making any required returns or exchanges more straightforward.

VISIT OUR WEBSITE WWW.DBDOMESTICS.COM | VISIT OUR SHOWROOM 407-419 SEASIDE, EASTBOURNE, BN22 7RT | T: 01323 725588 | E: SALES@DBDOMESTICS.COM

euronics



PROUD PARTNERS OF
 **BOSCH**



Eastbourne Carnival 2023 is fast approaching!

REGISTRATIONS for this years' *Eastbourne Carnival* are coming in – and we are delighted to see a high number of last years' entrants return as well as new entrants join in.

The theme for this years' Carnival is 'Sussex By The Sea' and entrants are invited to get creative and display what they love about our wonderful county. A real opportunity to showcase the history, culture, and environment of Sussex!

What's different in 2023?

The route for Carnival has changed. The main parade will begin at 2pm from *Fisherman's Green*, and process down to *Wish Tower Slopes*.

After the main parade, there will be a Street Party in Victoria Place, with DJs from *Get Loose Radio.com* playing Carnival music from 4:30 – 6:30pm

By **Mina O'Brien**, Chair. Photography by **Modify Media**

Get involved with this years' Carnival

There is still plenty of time to get involved!

- It is **FREE** to register as an entrant and take part in the Carnival.
- **Last date to register as an entrant is 12th May 2023.**

If you are an individual or not part of a business or community group and wish to join in the Carnival – we are putting together 'Everyone's Carnival' Hosted by *Cotton Candy*.

For more information on registering for 'Everyone's Carnival' – contact www.facebook.com/cottoncandycreators or email info@eastbourncarnival.com

Dance tuition

Get ready to strut down the seafront with our fabulous local dance instructors – *Cherry Dance*, and *Zumba with Emma*.

Groups can contact the Carnival directly to see if they can get funded tuition from *Cherry Dance*.





Individuals have the chance to attend weekly dance classes (class fee applies).

- Access Dance tuition on Thursday evenings with *Cherry Dance* in Cornfield Lane (see www.cherry-dance.com)
- Zumba Dance tuition on Tuesday evenings with *Zumba with Emma* at Leaf Hall (see www.facebook.com/ZumbawithEmmaM)



Jacquie, Emma and Adam from Cotton Candy Creators. Photo: Mina O'Brien.



Volunteer as a Marshal or Bucket Collector

Marshals are a big part of ensuring Carnival is a safe and happy event. Training and PPE are provided before the event.

Bucket collectors help us fundraise for the charities that take part in Carnival and the Carnival itself.

For regular updates on Eastbourne Carnival

Please visit our website and social media pages:

www.eastbourncarnival.com

www.facebook.com/eastbourncarnival

www.instagram.com/eastbourncarnival

www.twitter.com/EBCarnival

www.linkedin.com/company/eastbourne-carnival





The Chaseley Trust

Your specialist local charity enabling people with complex disabilities to live a full and active life



Located in South Cliff, Eastbourne, The Chaseley Trust is a 55 bed charity care home offering high-quality care, nursing and rehabilitation services for adults with complex neurological disabilities and conditions such as Acquired Brain Injury, Spinal Cord Injury, Stroke, Multiple Sclerosis, Motor Neurone, Parkinson's Disease and Cerebral Palsy.

We offer residents:

- 24 hour residential care and nursing for long term and respite stays
- Specialist rehabilitation services – neuro physiotherapy & occupational therapy
- Fully wheelchair accessible gym facilities also open to the local community
- Dedicated and highly trained staff
- A varied range of stimulating activities
- Healthy and nutritious meals tailored to personal diets
- A home from home in a stunning seaside location
- Casbar, our bistro cafe open to family and guests to socialise during the day

We offer staff:

- Comprehensive in-house training
- Apprenticeships and the opportunity for additional qualifications
- Competitive rates of pay
- Rewarding work
- Career development
- Rolling Rota
- Benefits include free health scheme and life insurance cover

We offer the community:

- Volunteering opportunities
- Fundraising events and opportunities
- A very worthy local cause to support

For further information or to visit, please contact us on **01323 744200** or by email: reception@chaseleytrust.org www.chaseley.org.uk



Springing into April with The Chaseley Trust

LAST month we were really excited to see the return of *Millie's Nightclub* for the first time in over three years! The nightclub for adults with disabilities takes place on the 3rd Friday of each month at *The Chaseley Trust*.

By **Jodie Cornford**

Could you take on our latest challenge, trekking 32km along the Jurassic Coast in just one day? The Mountain leaders at West Highland Adventure Tours, will guide us along this stunning stretch of coastline and you can secure your spot for just £25!

The team at *UK Ultra* have very kindly gifted *Chaseley* a couple of places on any of the four South Downs races across the weekend of 27th & 28th May: 20 miles, 50k, 100k or 100 miles! If you are interested in running one of these four races please contact us. All we ask in return for your free place is a pledge to raise a minimum of £250 to support the wonderful work we do here at *Chaseley*.

Jason's Barbers of Seaford, *UK Growth Coach* and *Growth by Design* have all confirmed *Chaseley* as their Charity of the Year for a second time!

We also had the pleasure of attending the *Seaford Striders' Awards* evening and was presented with a cheque for £1,750.

We are so very grateful for the continued support of our local, and not so local business partners, as well as our ever faithful supporters. Thank you from all of us at *The Chaseley Trust*.

Let's talk

For further information on the charity please contact: Jodie Cornford, Fundraising & Marketing Manager. **01323 744200** or jodiec@chaseleytrust.org

If you feel that you could support *Chaseley* by making them your Charity of the Year or potentially host an event on their behalf, please contact Jodie on **01323 744200** or fundraising@chaseleytrust.org



TREK THE JURASSIC COAST
 32KM IN ONE DAY ALONG THE SOUTH WEST COAST PATH

Secure your place for just £25 & pledge to fundraise a minimum of £250

CONTACT FUNDRAISING ON:
FUNDRAISING@CHASELEYTRUST.ORG
 01323 744200

16th September 2023

TheChaseleyTrust
 Supporting People with Disabilities
 Registered Charity Number 1090579

MILLIE'S NIGHTCLUB
 AT TheChaseleyTrust
 Supporting People with Disabilities
 South Cliff, Eastbourne, BN20 7JH
 01323 744200

A NIGHTCLUB FOR ADULTS WITH DISABILITIES

£4 cash entry

Carers free

WWW.MILLIES-NIGHTCLUB.CO.UK
 WWW.FACEBOOK.COM/MILLIESNIGHTCLUB

7-10PM

- 17TH MARCH
- 21ST APRIL
- 19TH MAY
- 16TH JUNE
- 21ST JULY
- 15TH SEPTEMBER
- 20TH OCTOBER
- 17TH NOVEMBER
- 15TH DECEMBER

18

WIN £2500 to help launch a new business

LEAP is a FREE Business Start-up Programme that is available to Eastbourne Borough based residents who are thinking of starting a new business. The Programme is also open to businesses who have been trading less than 6 months. LEAP is delivered by Edeal Enterprise Agency and is funded by Eastbourne Borough Council; this intensive business support programme offers a £2500 prize in the form of a grant to one lucky winner!

The LEAP Programme is split into the 3 stages:

STAGE 1:

Attendance at a business start-up workshop, this can be either a physical one-day workshop in Eastbourne on 5th May 2023 or a virtual workshop across 2 half days on the 22nd and 23rd May 2023. After the workshops have been held, 15 candidates are shortlisted to move to stage 2. The remaining candidates are offered additional business advice and support under another mentoring programme.

STAGE 2:

The 15 selected candidates will be allocated a dedicated business mentor who will work with them to produce a strong, robust business plan. During this period, they will also attend four 3 hour workshops on Finance, Marketing, Legal and Social Media Marketing. The completed business plans are submitted and judged when 5 finalists will be selected. The finalists will then present their plan to the judges at a mini-Dragons Den type event where a winner will be chosen. The winner will be announced at an awards event where they will win a cash prize of £2500 and the award – “LEAP Entrepreneur of the Year”.

STAGE 3:

Additional mentoring support is offered to help candidates launch their new business.



So, if you live in the Eastbourne Borough and you are thinking of starting a new business then what are you waiting for?

You can register your interest now by calling Edeal on **01323 641144** or email info@edeal.org.uk



New members for March

1812 Property Completion • Global Wealthmap • ThinkWork Startup Consultancy • SORA Creative • AP Exclusiv Events • Redgate Production • Coastal Roofing Sussex • Zoe Carroll Coaching and Training • Foundry Coffee

Business is booming in Eastbourne

There have been lots of stories of businesses struggling recently and it's certainly true that for many trading is tough right now. Rising interest rates, high inflation and soaring fuel costs have all had an impact. But despite that several businesses in Eastbourne are thriving, and one longstanding business is having to expand just to keep up with demand.

HR GO have had an office in Eastbourne for several years and have supported a wide range of local employers including the NHS and Waitrose. But with so many businesses in Eastbourne still seeing strong demand, the recruitment firm has had to take on new staff and a new office just to keep up with demand. It's particularly good news for Eastbourne local, Lauren Jones who has now been appointed Branch Manager.

Lauren told us *"I know that finding a job can be stressful so we do what we can to make it easy for everyone. We work with lots of different businesses in the wider Eastbourne area and it's just so rewarding to help people find their dream job, and we get to work with such a diverse range of roles."*

"Employers are having to be much more flexible to attract the best people. In fact across the country lots of employers are reporting a shortage of employees for all sorts of roles. I think that's why more and more are turning to companies like HR GO to help them find the right people. We have our own network of candidates that are ready for work, and we also have colleagues in offices across the country who can help us to find the best possible candidates."



Bodie with the HR GO team

Lauren leads a busy team of experienced recruiters, and has taken on three new recruiters, Summer Pannett, Anais Taylor and Olivia Laughton, to help cope with growing demand.

The team is also supported by their own mental health officer, Bodie,

who also happens to be Summer's dog, and a regular visitor to the office on Station Parade.

So if you're thinking of a new career, or you're trying to recruit locally then Lauren and the team at HR GO would love to hear from you on 01323 736400.

When personal service matters most



Many people lose out when holidays booked online are cancelled, but not those booked with David Cook. This year marks the 30th

anniversary in the travel industry for successful Eastbourne based Travel Counsellor, David Cook.

David told us *"For me it's all about being personal, offering a level of service that the internet simply cannot compete with. From the*

moment a customer contacts me, they have one telephone number and one person to speak to, and no more waiting on hold for hours on end. There is a 24/7 duty office as well to support my customers should anything arise whilst in resort."

"Since 2021 when people were allowed to travel again, I've noticed a significant increase in the number of customers coming to me for my knowledge and first-hand experience. I have travelled extensively to all corners of the world and like nothing more than getting off the beaten track and finding those hidden gems, whether that be in a beach resort or whilst

on an adventure. For those places that I've not visited yet, I can tap into the knowledge of nearly 2,000 other Travel Counsellors around the UK and elsewhere in the world."

Having this kind of back up and team support is invaluable and that is extended to every Travel Counsellor customer regardless of whether they book through me or a colleague."

As we come out of a cold wet winter, this time of year is always busy for the travel industry. Airlines, tour companies and hotels offer incredible discounts to tempt you to book a holiday. However,

using an independent travel agent allows you to cut through the adverts and get honest and unbiased advice. Travel Counsellors base their business model on referrals so it's in their interest to deliver excellent personal service and provide customers with their perfect holiday. David Cook can also access the best deals available.

For more information or to get a tailor-made quote call 01323 660 109. Follow David on Facebook/Instagram @ travelswithdc

Join today and reap the rewards!

Eastbourne unLtd Chamber of Commerce is the largest town based Chamber in the South East, so becoming a member will connect you to a large business network offering support, advice and opportunities for you and your business to grow.

Our members not only benefit from the varied events programme we offer but membership also enables them to submit an editorial for inclusion in this publication. This offer is free exclusively for our Members.

Annual membership starts from as little as £59+vat per year – Join today, it's a complete no brainer!



INTERNATIONAL
LANGUAGE
CAMPUSES

Open your home to the world

Host students from over 50 countries with EF. Lovely hosts are needed to share their culture with our students who are coming to Eastbourne. We are looking for hosts that are available now or in summer 2023.

EF Eastbourne
01323 819050
accommodation.eastbourne@ef.com



Sign up today at
ef.co.uk/hostfamily

Call us now to get
more information.
01323 819050



SCHMIDT

KITCHENS | LIVING | BEDROOMS and MORE

Celebrating our 1 year anniversary we are offering all our customers an extra 15% off



NEW KEY COLLECTION

This collection was created to offer all Schmidt's essentials with affordable prices, while featuring the Schmidt quality.

From £9,500*

This amount includes units, worktops and Bosch appliances + VAT

FREE
BOSCH OVEN
worth £450*

SCHMIDT EASTBOURNE

39 Grove Road, Eastbourne
East Sussex, BN21 4TX
Tel: 01323 408333

> www.homedesign.schmidt

SCAN ME



SCHMIDT

KITCHENS | LIVING | BEDROOMS and MORE

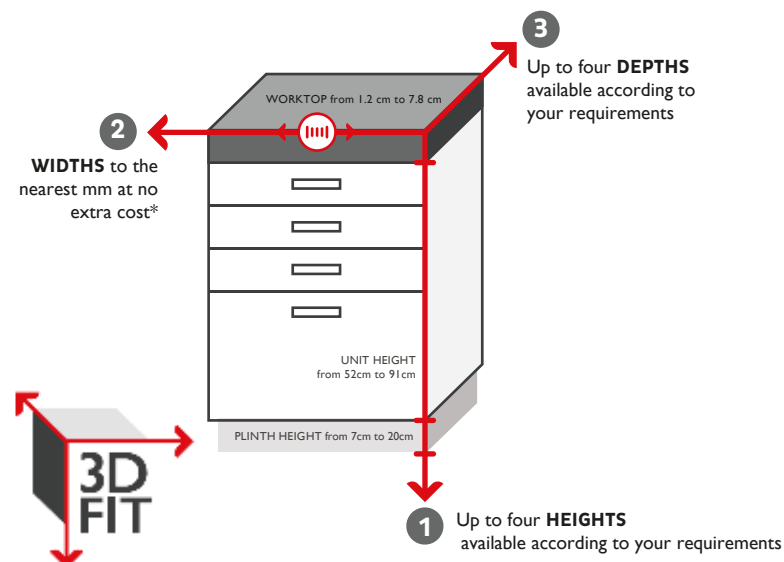
Celebrating our 1 year anniversary we are offering all our customers an extra 15% off



3D FIT - ONLY AT SCHMIDT

bespoke widths , heights and depths

With 3D FIT, you can make the best use of the available space and produce a flawless finish where every millimetre counts. Schmidt can adapt the three different dimensions of your units to gain more storage space that any other brand.



SCHMIDT EASTBOURNE

39 Grove Road, Eastbourne
East Sussex, BN21 4TX
Tel: 01323 408333

> www.homedesign.schmidt

SCAN ME



Play sport in the USA

STUDENT athletes at East Sussex College in Eastbourne now have the opportunity to study and play sport in the USA.

By **Peter Lindsey**

Skiltek Sport – the college’s Football Academy provider – has teamed up with Lancaster FC, based in Pennsylvania.

This new partnership has opened up an opportunity for local students, including those studying at East

Sussex College, to study and play sport in the USA.

This agreement will help the College develop further opportunities post-college study for students.

Scott Raybould, Head of Curriculum for Sport, Public Services and A-Levels at East Sussex College’s Eastbourne campus, said, “This new Skiltek partnership provides



students studying any course at East Sussex College with an incredible opportunity to apply to study and play sport in the USA. It provides an exciting route for students to pursue following their studies and is a unique experience.

“This partnership strengthens the opportunities at the college to be part of a successful football academy provision where students train and play fixtures as part of their college experience.”

For more information visit: www.skilteksport.co.uk/usa



BIRCH MEWS - THE ONE STOP VEHICLE SHOP

Everything the car and van owner needs, all in one square.

All vehicles serviced and repaired

BIRCH MEWS AUTOS
MOT • REPAIR • SERVICE
01323 412993

Spring Check
FREE 10 point vehicle health check with every MOT
Offer ends 30th April 2023

MOT • Servicing • Repairs
Brakes • Clutches • Exhausts
Diagnostics • Air conditioning
Steering • Suspension • Welding
Bodywork (arranged)

Looking after your car and your pocket!

MOT CLASS 4

01323 412993
Unit 18
Birch Industrial Estate
A member of GoodGarageScheme.co.uk

DENT DEVILS 15 Birch Estate, Eastbourne
East Sussex BN23 6PH
01323 639244
07764 344795

SPECIAL OFFER 20% off rrp for dent repairs to remove dents from the love of your life on production of this advert

FROM THIS TO THIS

www.dentdevils-eastsussex.co.uk

DCT-PERFORMANCE!
ROLLING ROAD

TUNING
ECU REMAPPING & REPAIRS
EGR & DPF SOLUTIONS
KEY PROGRAMMING
ELECTRICAL & MECHANICAL
FAULT FINDING & REPAIRS

APRIL SALE
20% OFF
WITH THIS ADVERT
OFFER ENDS 30TH APRIL 2023

01323 735 949

Unit 10-11, Birch Industrial Estate
Birch Road, Eastbourne BN23 6PH.

info@dct-performance.co.uk
www.dct-performance.co.uk

Come and find us at:
Birch Industrial Estate, Birch Road, Eastbourne BN23 6PH

The Warm Hub – what's it all about?

LAUGHTER, cakes, tears, giggles and lots of cups of tea...It's hard to sum up the warm hub that has been running since the beginning of January at Polegate Community Centre.

By **Peter Lindsey**

But now that the main 12 weeks has come to a close, The Warm Hub Team wanted to give everyone a rundown of what's being going on at the community centre on a Thursday morning.

We can all remember the headlines back last October. Energy prices to rise, mortgages to rise, food prices

to rise.....life for everyone was about to get that bit tougher and there seemed no positives in sight.

This was why when Pat Payne, the chair at the community centre, came to a group of people and said she wanted to make a difference and needed some help with an idea she had, plans for the *Warm Hub* were soon in full swing.

Here's Lou, once of the team:
"Providing a safe, warm space with free



refreshments and a mug of soup for all attending, we flung open the doors on a rainy Thursday in January and have gone from strength to strength since.

"We have had so much local support for these events, from *Tescos* with their extra supplies, *Morrisons* with their hand knitted blankets, and *Polegate Town Council*, who allowed us to get started with a donation of teas and coffees etc.

"*Co-op* and *Pass It On* joined forces with us and we now have a collection of free food that we can share out and *Glennisers* dropped off three gorgeous random acts of kindness that meant we could brighten a few people's day.

"Regular centre users joined us as well as lots of new faces and users both young and old have been coming along. The outpouring of support that the *Warm Hub* has had both when speaking to local residents and on social media has been amazing.

"Although the initial 12 weeks (and the delicious soup) have come to an end, we are not stopping, you can't get rid of us that easily!!

"We will be continuing on from 10am–12 every Thursday from the 6th April so pop along and join us for a cuppa and a chat, we will even throw in a biscuit or two!!!"



BRINGING THE PHYSIOTHERAPY CLINIC TO YOU SERVICES WE OFFER

- Physiotherapy for Seniors
- Post-Surgery Rehabilitation
- Rehabilitation after Joint Replacements
- Physio for Aches and Pains
- Respiratory Physiotherapy
- Neurological Physiotherapy
- Physiotherapy in Care Homes
- Sports Injury Physiotherapy
- Women's Health
- Massage at Home

01273 569222
0780 280 9917

info@homephysiocompany.co.uk
www.homephysiocompany.co.uk

Can you help?

EASTBOURNE and South Wealden Multiple Sclerosis Group is in need of volunteers to help with its weekly social groups, fund-raising and administration.

By **Peter Lindsey**

The Group holds a weekly craft and social group at Polegate Community Centre, a Ladies Group, physio gym sessions at the DGH Gym, summer and Christmas Fairs and regular quiz nights at the Fishermen's Club, Royal Parade.

The Group also funds wheelchair accessible transport, expert help with benefit applications, and grants for those affected by the neurological condition.

A particular current need is helping volunteering providing refreshments

at our Friday craft club at *Polegate Community Centre* 10.00am–12.30pm.

If you have some time to spare and would like to help, contact Group Co-ordinator Linda Warner at rchrwarn@aol.com



Don't forget your passport

THERE seems to be a conspiracy to stop travel these days – if it's not the train strikes to get you to the airport, or the Border Control staff, we now have problems at the passport office scheduled for early April.

By **Martin Wellings**, Personal Service Travel

The message, therefore, is to get your application in as soon as possible if passport is running out, and the easiest way of doing this is to get your photos done at the booth in the railway station which then gives you a code that is quoted on an on-line application – all very straight forward and quick.

Apart from these issues, things do seem to have got back to normal apart from many more airline schedule changes which are particularly prevalent on long haul flights. This brings me to the high demand that we are experiencing for people visiting family and friends in Canada, Australia and New Zealand, and so we are getting quite expert in trawling the airlines to get the best prices.

Book early

I know it always sounds like a sales line, but it still remains the case that booking early will invariably be cheaper than leaving things later. Only last week, one of the tour operators had to tell us that when confirming a holiday on which we had a quote the previous day, the price had gone up by £40.

Technology is all very well if it helps the end consumer, but all too often it doesn't, and only recently I heard of a BA passenger asking for a coffee being told that she had to download an app



to order it. The mobile was off and in the overhead locker, so the passenger insisted that their "verbal" request was met: it was, albeit reluctantly.

Sail away

I've talked a lot about flights this month, but this is just one form of travel – there is rail and cruising. When mulling over your holiday plans this year, please don't dismiss the thought of cruising, as many have a very fixed view of either for or against. There is the choice of river or ocean cruises and if ocean, the standard and size of ship, from one of the mega size vessels with all the entertainment on board, to the very select motor yachts accommodating some thirty-eight passengers. As a personal preference, it would be the smaller the better!



Travel Agents since 1953



Planning to Travel?

Make your first stop PST – our expertise is free and whatever your plans, we can help.

**FLIGHTS • CRUISES • PACKAGE HOLIDAYS
RAIL • COACH • RIVER CRUISES
TAILOR MADE HOLIDAYS**

With all this range and our expertise, why search for something we will already have found?

Personal Service Travel

Grove Road, Eastbourne

01323-410500 • holidays@pst-travel.co.uk



**THE FAMILY STORE
WITH A WHOLE
LOT MORE!**




THE FAT
Butcher
SOUTH

**SIMPLY
 THE BEST
 MEAT PRICES
 IN THE SOUTH**

**ESK
 CAR
 WASH**

**OPEN 7 DAYS A WEEK
 OVER 15 YEARS
 EXPERIENCE**



Fruits &
 Vegetables

**EVERY
 THUR-SAT**



**The Bean
 Bike**


COFFEE SHOP AT ESK EASTBOURNE

WHAT WE OFFER:

BARISTA HOT DRINKS - COLD DRINKS -
 SMOOTHIES - FRAPPES - MILKSHAKES

TOASTIES - BAGELS - CAKES - TEACAKES -
 PASTRIES



Bring this coupon to the cafe in store to get:
 Buy **ONE** drink, get your **SECOND** one
FREE!



COURTLANDS ROAD
 EASTBOURNE
 EAST SUSSEX
 BN22 8TR

18-24 CAMBRIDGE ROAD
 HASTINGS
 EAST SUSSEX
 TN34 1DJ

CONTACT US
 EASTBOURNE: (01323) 435500
 HASTINGS: (01424) 422325
 INFO@ESK.CO.UK

Special treat for children

THE Children with Cancer Fund – based at The Triangle in Willingdon – treated some of its families to Afternoon Tea at the Wishing Well Tea Rooms.

By **Peter Lindsey**

It was funded by the ARDIS Fund at the Sussex Community Foundation.

Chris Downton from CWCF said: "We enjoyed an amazing afternoon tea.

"We had families together all talking and soaking in the 'normal' whilst also not feeling as 'alone' on their journey when

they are meeting new people who just 'get it' like most people never could!

"We had parents making new friends and kids all forming new and very beautiful friendships too.

"The place was filled with yummy cakes and lots of laughter. It's exactly why we put on these events! The smiles said it all.

The food and service were second to none."



A Family Law team helping clients who are facing changes in their relationships, such as;

- Moving in together
- Buying a home
- Getting married
- Separating
- Co-parenting

We pride ourselves on a practical and supportive approach to helping our clients through whichever process suits them and their families. We offer an initial free 30 minute consultation with one of our experienced and friendly lawyers, Claire, Laura and Susie.

You can reach us on either **01323 819519** or family@eminread.co.uk.

More information available at www.eminread.co.uk

Emin Read
SOLICITORS

Blind Society Golf Day

THIS year the Eastbourne Blind Society are celebrating 100 years as a local charity.

By **Gail McKay**

Originally formed in 1923 for eight young local lads who returned from WW1, blinded, they continue to provide our services to the whole community.

They currently have 500+ members aged 5 years – 103 years old.

To promote awareness of visual impairments and the support which is out there, they will be holding a Charity Golf Event on Friday 23rd June at Willingdon Golf Club.

Monies raised will go towards opening a community sensory garden in *Gildredge Park* for all to enjoy.

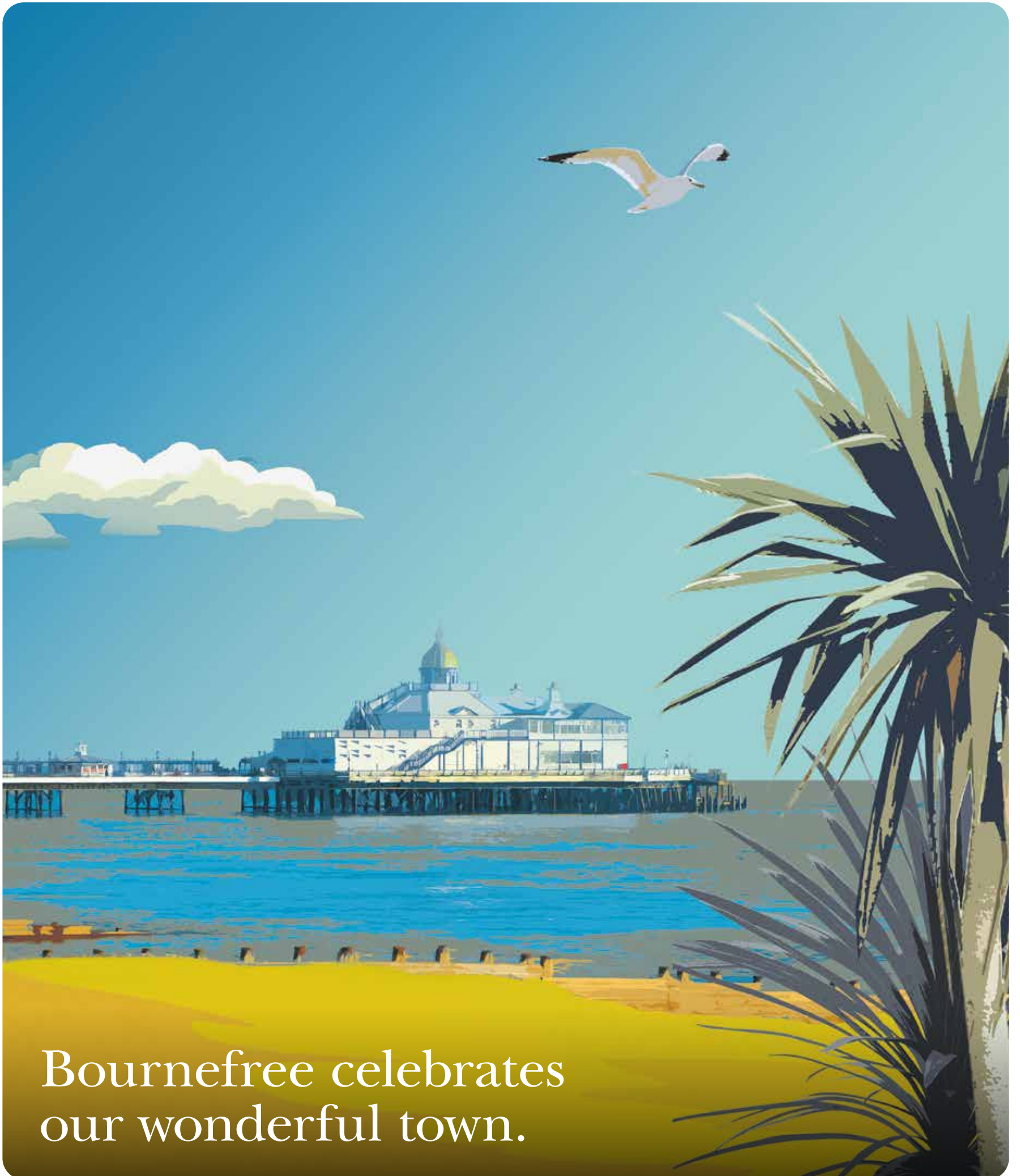
Teams of 4 – Stableford 2 of 4 Scores to Count, £200 per team Breakfast, coffee and two course meal included.

£5 Mulligan shots available. There will be a raffle, win a Brand new 2023 Driver for only £10 and Beat the Pro over the Sleepers.

Sponsor a hole for £100 or Putting Green for £500.

Contact Hannah: **01323 729511**
hannah@eastbourneblindsociety.org

Best of Eastbourne



Bournefree celebrates
our wonderful town.



2019 – Flagship store opens in The Beacon.

W. BRUFORD – since 1886

TRADING in Eastbourne for over 137 years *Brufords* has come a long way since it's humble beginnings in 1886, and now one of Eastbourne oldest independent businesses, to this day the brand continues to evolve.

Our story began back in 1886, when William Bruford relocated his family to Eastbourne from south London, where they had previously run a successful jewellers, pawnbrokers and optical store. Upon their relocation, William quickly decided upon purchasing an existing business called "William Page" – little did he know then, that this business would endure for the next 137 years and counting! On the 17th July 1886, the new store located at No.100 Terminus Road opened its doors to the public for the first time. Much like today, for the next thirty years, the business was run happily by William and his family.

In 1914, William sadly passed away and the managerial torch was handed to his son, Albert. Under Albert's leadership the business flourished, due to both a prospering business and the town of Eastbourne becoming a very fashionable seaside destination for London's wealthy clients and patrons. Due to the continued success of the business, 1924 saw

By **Caitlin Rowson**

the store expand to almost twice its original size.

However, on the 7th of February 1943 disaster struck, when the building was entirely wiped out during a night time bombing raid. Never one to be beaten, Albert's resolute determination not only managed to keep the business trading during this time, but he also oversaw the rebuilding of the entire premises. Whilst it is believed he

died in 1953, just before the work was complete, he was able to see his vision come to life.

After Albert's death, his son Douglas took over the running of the business for almost 20 years, until in 1974, his son Nicholas Bruford (Nick to those who knew him) took over. With the building of the Arndale Centre in 1981, Nick took the opportunity to relocate from the Terminus Road building

to our now iconic Cornfield Road location. Although a smaller site, the business flourished, becoming a landmark in the town. During the late 1980's and early 1990's, the UK saw the rise of regional shopping centres and a change in the retail landscape. Initially being one of the first to adopt this model, Eastbourne had done a great job of spotting the need for a shopping centre but hadn't realised the need for expansion to keep up with the likes of Brighton & Bluewater. Subsequently, retail in Eastbourne suffered during the later parts of the decade, and subsequently Nick, along with his family, made the decision to sell the business in 1998, after almost 112 years of operation.

Family friends who owned a similar prestigious business in Norwich called Winsor Bishop, purchased the business with the intention of running the two stores side by side. They both stocked and sold very similar Swiss watch brands and fine diamonds. Unfortunately, due to the death of the father very soon after purchasing *Brufords*, the Kerridge family decided to look for someone



1957 – The Terminus Road store.



2012 – ‘Inspired by Brufords’ in The Beacon.

to take over the running of the Eastbourne business.

One day

This is where our current Owner & Managing Director, Ashley Pugh, comes in... Originating from the Midlands, Ashley took the opportunity in 1985, much like William Bruford 100 years earlier, to relocate to Eastbourne and run the Goldsmiths store in Terminus Road. Always aware of the prestigious Brufords just around the corner, Ashley remembers thinking to himself “One Day”. That day came in 2000, when Winsor Bishop approached Ashley offering him the position of General Manager for Brufords.

Three years later, in 2003, the opportunity to purchase the historic business from Winsor Bishop presented itself, and as they say, the rest is history.

In the years that followed, under Ashley’s leadership, Brufords has gone from strength to strength. In 2009, to meet the needs of more modern fashion choices, “Inspired by Brufords” was born. The store located

in the Beacon Centre offered the customers branded jewellery and watches from the likes of Pandora, Thomas Sabo and Michael Kors. The concept of Inspired brought a new demographic to the Bruford business, whilst retaining its up-market feel.

And in 2019, with the launch of the newly developed Beacon Centre, Brufords combined its luxury watch and jewellery brands into one flagship store. Today, The Beacon premises is home to luxury Swiss watch Brands such as ROLEX, TAG Heuer, Breitling and TUDOR, as well as showcasing an extensive range of fine diamond rings and jewellery collections. Proud of its history, there is also a range of pre-owned watches and jewellery available in the store, alongside a comprehensive aftersales, restoration, repair and valuation service.

Finally, new for 2023, working in partnership with British bridal jewellery brand Brown & Newirth, a beautiful bespoke boutique is being installed over the coming weeks.

The Bruford’s story is set to continue

In 2022, we were lucky enough to secure the freehold of another iconic Eastbourne building, in the form of No. 10 Cornfield Road. Subsequently that year we closed the doors of our much loved 11–13 Cornfield store for one final time.

Currently under refurbishment, and set to open Autumn 2023–Spring 2024, our new premises will offer customers a modern yet traditional retailing experience, staying true to our roots. After major investment, the five-storey building will be home to our state-of-the-art, brand-accredited watch workshops, a fully equipped jewellery workshop, allowing the opportunity to personalise and design bespoke pieces of jewellery, and finally the chance to sample a glass of local champagne from local vineyard Rathfinny.

Alongside the investments we continue to make in our business and to our colleague’s professional development, we also take pride in supporting our local community.

Supporting charities

Our long-standing relationships with charities, such as St Wilfrid’s Hospice and the Children’s Respite Trust, go from strength to strength and we continue to sponsor various business events in and around the town.

Wishing to keep up with the changes that we are seeing in society, one local cause we have seen develop over the last 18 months is the Eastbourne Foodbank. Over the last year, for every watch battery that we change in store we have chosen to donate an item of food to this worthy cause.



1981 – 11–13 Cornfield Road.

Talking to Howard from the Foodbank they have seen huge increases in the numbers of people relying on this help, and he is grateful for any contributions and donations made.



1886 – 100 Terminus Road.



2003 – Iconic Cornfield Road location.



2023–2024 – New store opening.

The Grand Hotel

Stay by the Sea

AT THE GRAND HOTEL EASTBOURNE



Affectionately known as 'The White Palace', the five-star Grand Hotel is located on Eastbourne's glorious seafront.

With a luxurious range of accommodation, such as the Junior Suites with sweeping sea views to the newly refurbished Superior bedrooms boasting a contemporary atmosphere, there is something for everyone here, from families to couples alike.

There are many indulgent amenities such as the tranquil Health club and Spa, where you can take a dip in the heated indoor or outdoor pool or book a rejuvenating treatment, to dining in the two rosette Mirabelle Restaurant that boasts divine food and an intimate atmosphere.

Step into The Grand hotel for an experience you won't forget and book your trip today.

Book online or by contacting our reservations team on 01323 412345
or reservations@grandeastbourne.com.



The Grand Hotel | King Edwards Parade | Eastbourne | East Sussex | BN21 4EQ
01323 412345 | www.grandeastbourne.com



Lightning Fibre visit Eastbourne Mayor Pat Rodohan at the town hall in 2022.

Lightning Fibre – Eastbourne's local Alt-Net

LIGHTNING Fibre was founded in 2018 by Eastbourne resident Ben Ferriman, CEO, with the vision of building a hyper fast, full fibre broadband infrastructure for the town of Eastbourne.

By **Gail McKay**

Although its roots lie within Eastbourne, where it's headquarters are located, the company has since expanded to Hailsham, Heathfield, Hastings and Kent (Tenterden), and created one of country's strongest Alternative Network/Internet Service Provider brands.

"This really is a local success story worth celebrating. *Eastbourne Council* welcomed the decision by Lightning Fibre to build a Full Fibre network here back in 2020 and we're delighted with the work being

undertaken by this company. *Lightning Fibre* is creating hundreds of local jobs, and they support, engage and invest in our community through events, sponsorship and charitable donations." – Leader of *Eastbourne Council*, Councillor David Tutt.

Lightning Fibre is helping to meet the UK Government's commitment to bring gigabit-capable broadband to every home in the UK.

"The Government's manifesto commitment to deliver nationwide gigabit-broadband with £5 billion investment, leveraging in further private investment by companies such as *Lightning Fibre*, is fundamental for local connectivity

and economic growth. *Lightning Fibre* is a locally-based company and its investment here means the creation of more local jobs and inward investment in our towns. I am happy to support *Lightning Fibre* as they help to roll out Full Fibre across East Sussex, and beyond." – Sally-Ann Hart, Hastings and Rye MP.

Lightning Fibre works closely with local Managed IT Service Providers including *Southern IT*, *A1 Solutions* and *M-Tech Systems* under a wholesale partnership to deliver the new Full Fibre network to business large and small across the South East.

The symmetric, multi-gigabit full fibre network delivers guaranteed

upload and download speeds of at least 100Mbps at the modem, up to 900Mbps for residential customers and 10,000Mbps for businesses.

Lightning Fibre actively engages with local stakeholders at the Borough and County Councils, and their working partners, with the aim of building good working relationships. *Lightning Fibre* are paid-up members of Eastbourne, Hastings, Hailsham and Heathfield *Chambers of Commerce*, as well as *Eastbourne Hospitality Association* and *Visit Eastbourne*.

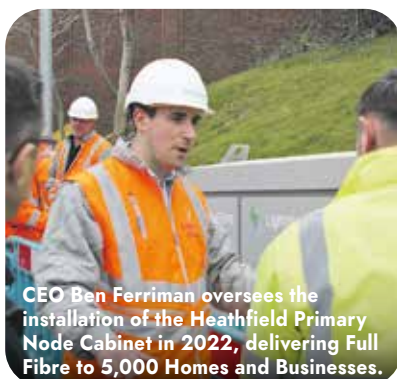
Lightning Fibre works closely with local charities and event organisers to support the local community. The company is a key sponsor of *Wyntercon*, *Eastbourne Carnival*, *Heathfield Agricultural Show*, *Hastings Comedy Festival* and *Hailsham Festival*.

Lightning Fibre's biggest sponsorship deal is the *Eastbourne Ice Rink*, which attracted over 15,000 skaters in 2021 and over 17,000 in 2022.

Lightning Fibre is true local success story, with thousands of customers and a 4.8 Star Excellent Rating on *Trustpilot*, customer feedback is overwhelmingly positive.

"*Lightning Fibre* is a real, local success story; employing hundreds of local people, investing heavily in our town and bringing multi-gigabit connectivity to Eastbourne. *Lightning Fibre* are 'levelling up' the area, for the Digital Age, and the *Chamber* is very happy to offer its ongoing support and encouragement to this great local company." – Christina Ewbank, Chief Executive, *Eastbourne Chamber of Commerce*.

Find out more on their website: www.LightningFibre.co.uk



CEO Ben Ferriman oversees the installation of the Heathfield Primary Node Cabinet in 2022, delivering Full Fibre to 5,000 Homes and Businesses.



Lightning Fibre at Eastbourne Carnival in 2022.



Ben and Steven Holt, CEO of Your Eastbourne BID, announce the Lightning Fibre Ice Rink for a second year in 2022.

Study at ESC!

East Sussex College (ESC) is home to a wide variety of courses with the aim of helping those in the local area thrive in their chosen industry. Whether your ambition is to go to university, you're inspired to start an Apprenticeship, or you're motivated to retrain in pursuit of your dream career - ESC is the place where you can do that.

There are a wide range of reasons why you should consider studying at ESC. The College is constantly evolving and improving courses to provide you with new exciting experiences, the opportunity to develop new skills, and gain valuable qualifications.

Partnership with UEA.

East Sussex College's Higher Education offer has been significantly boosted by the launch of a new partnership with the **University of East Anglia** (UEA) in Eastbourne and Lewes. ESC and UEA already work collaboratively as part of the South East Institute of Technology and this formal partnership will mean our communities benefit significantly from this relationship.

UEA, ranked 27th in the Times and Guardian University guides, will work with the College to validate the College's HE programmes at Eastbourne and Lewes from September 2023. These include programmes in Person Centred Counselling, Complementary Healthcare, Music Production and Creative Recording, Digital Media Design and Animation, Art and Practice.

UEA, ranked 27th in the Times and Guardian University guides, will work with the College to validate the College's HE programmes at Eastbourne and Lewes from September 2023. These include programmes in Person Centred Counselling, Complementary Healthcare, Music Production and Creative Recording, Digital Media Design and Animation, Art and Practice.

The partnership, which was announced last month, will allow the College to develop a wider range of HE programmes that meet the needs of local people ensuring the College plays a key role in upskilling and supporting local aspiration.

Professor Zoe Butterfint, UEA Associate Pro-Vice-Chancellor of Partnerships &



ESC GREEN TRAINING HUB

Helping Eastbourne be the best.



Scan the QR code to visit esctraininghub.com



One of the College's most exciting - and proud - moments came in autumn 2022 when they launched the **ESC Green Training Hub** in partnership with OHM Energy at Hampden Retail Park in Eastbourne. The College was selected to establish one of five new decarbonisation academies across Sussex to support the development of skills in retrofitting and green energy installation.

The Training Hub base is home to some of the College's adult provision and will also be utilised by learners in Further Education (age 16-19). The centre will support Local Authorities, construction employers, homeowners and businesses to improve insulation and install green energy products in commercial properties and housing.

The Training Hub was officially opened by TV presenter and author Simon Reeve, who said, "We need to protect what we've got, we need to claw back what we've lost... Renewable energy is all part of that."

We have to believe in it, we have to invest in it, we have to study it, train up to use it - this centre is so needed. So needed locally, but we need more around the country. I think ESC should be taking over Britain quite frankly to get more of them out there!"

East Sussex College also welcomed delegates from **SkillsFuture Singapore** to the newly opened ESC Training Hub. During National Apprenticeship Week 2023, an event ran in collaboration with **Sussex Chamber of Commerce** and included guests from the **Department for Education** and **SkillsFuture Singapore**.

The delegation from SkillsFuture Singapore were visiting to find out how the Local Skills Improvement Plan (LSIP) for the Sussex area has been developed, to see how they can duplicate the initiative to support their own skills requirements in Singapore.



Simon Reeve



Scan the QR code to read more on this story.

Apprenticeships, said, "UEA is delighted that East Sussex College is joining our established network of academic partners and we look forward to the first students studying towards UEA awards starting in September 2023. This reinforces UEA's commitment to higher education in our region and beyond and we are excited to be working with East Sussex College to support with further development of its provision."

East Sussex College has offered Degree courses for over 25 years. This new partnership with the UEA will ensure longevity and quality in the HE programmes delivered by the College.

Scan the QR code to read more.



Hospitality & the Sunshine Coast of Eastbourne.

An article in The Sunday Times earlier this year cited Eastbourne as 'The UK's most under-appreciated town' but local residents will already know the appeal of living in such a great town. It's dubbed the 'sunshine coast' and for a good reason: **Eastbourne was the sunniest place to be in the UK in 2022!** Using data from the Met Office, researchers from O'Flynn Medical found that Eastbourne received an average of 183.07 hours of sunshine a month in 2022.

Eastbourne has so many great hotels, bars and restaurants, and jobs in the tourism sector remain high. Hospitality and Catering professionals are in demand, and East Sussex College is working to fill this skills gap. And with recent alumni celebrating outstanding achievements in the industry, they are doing a good job of it so far.

Hrvoje Loncarevic studied Catering at East Sussex College Eastbourne and is now Executive Head Chef at The Grand Hotel in Eastbourne, the UK's only five-star seaside facing hotel.

Speaking about his journey, Hrvoje said, "During my time at the College I had various work experience opportunities in London. I spent my summer working at a two-star



Hrvoje Loncarevic



Michelin restaurant, which was a great experience; when I came back to College, I had the knowledge and the background of working in a kitchen to a high standard.

"When I finished College I started as a commis at the Grand Hotel and worked my way up senior sous chef. After nine years working here I learnt so much. I've competed in various competitions; I even represented the UK at an international competition in Switzerland, where I came third out of 12 countries. I am now Executive Head Chef at The Grand Hotel Eastbourne and oversee a brigade of 40 chefs!"



Scan the QR code to read more on this story.

Catering students help out at local food bank.

Level 1 Catering students at East Sussex College's Eastbourne campus visited Eastbourne Foodbank in late-January to learn more about how a food bank operates and spent time helping out with typical day-to-day tasks.

Following the catering department's choice to support @eastbournefoodbank as their chosen 'charity of the year', first year students visited the food bank to see how the organisation works behind the scenes. The Catering students were taken on a tour of the facilities and given a talk on how the organisation operates and supports the local community.

Students then helped sort through all of the deliveries, separating different tinned foods and toiletries. They also date checked everything to make sure



effective stock rotation was in place - elements of which were covered in their day-to-day sessions at the College.

The catering department at East Sussex College, said, "We're very proud to be supporting the @eastbournefoodbank this year and we hope the generous donations from our guests across this academic year will go on to support many families across Eastbourne."

Scan the QR code to read more on this story.

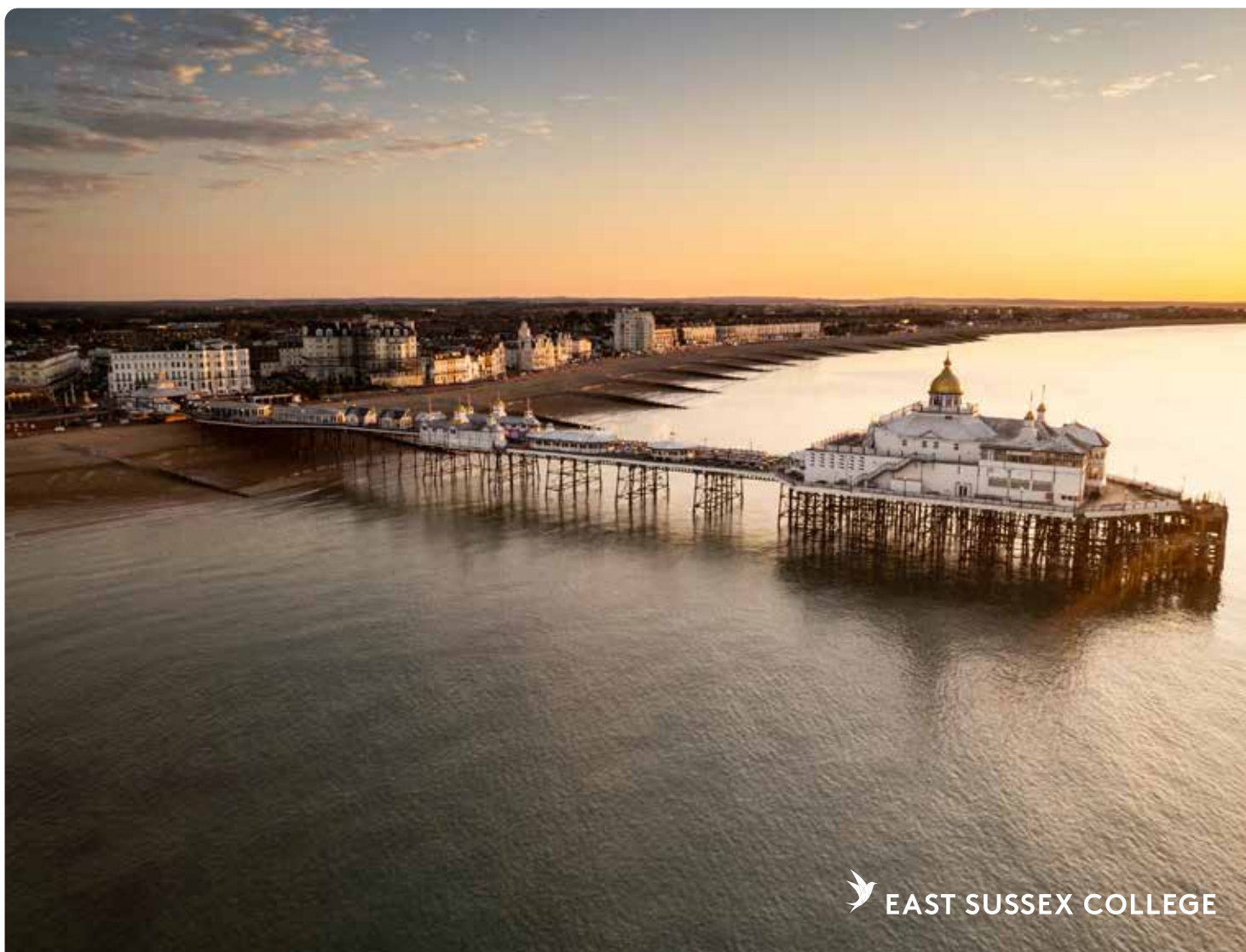


A second ESC alumni making waves in the industry is Jupiter Humphrey-Bishop, 23 from Eastbourne, who won the 2023 Gold Service Scholarship! Jupiter was one of 200 applicants; eight finalists went on to compete at Corinthia London in January, with Jupiter announced the winner in February.

Following her time at college, Jupiter went on to work at The Grand Hotel Eastbourne, before moving on to one of its sister hotel's, Tylney Hall in Hampshire. While working full-time, Jupiter completed her Level 5 Diploma in Event Management. Jupiter was

urged to enter the Gold Service Scholarship by one of her managers.

"I was encouraged to step out of my comfort zone," Jupiter said. "The award has opened up so many new opportunities. I am now a member of the IOH [Institute of Hospitality] and have the chance to travel and experience the Hospitality and Catering industry worldwide. I am so grateful for my experience at college, which introduced me to roles I didn't even know existed. We got to run the restaurant and have valuable work experience placements. The seed was planted early on; this is what I wanted to do!"



VISIT US FOR

Boutique Independent Shopping



ENTERPRISE
INDEPENDENT SHOPPING

MON – SAT 9AM – 5.30PM, SUN 10AM – 4PM

ENTERPRISE SHOPPING CENTRE, STATION PARADE,
EASTBOURNE, EAST SUSSEX BN21 1BD

ENTERPRISE-CENTRE.ORG





Stagecoach says 'All aboard' the Dotto

NEED some half-term entertainment? Give the kids something to brag about when they are back in the classroom and take advantage of everything Eastbourne has to offer.

By **Meghan Eales**

Listed as *Time Out's* best place in the UK to visit in 2023, a memorable day out couldn't be easier. And no visit is truly complete without a trip on the local Dotto train!

Regular highlight

Stagecoach South East have said 'all aboard' once again

this year as the Dotto returns to Eastbourne from April 1st 2023. Cruising between *Holywell Retreat* to *Sovereign Harbour* and back, experience the natural beauty of Eastbourne in a completely unique way. Frequently covering loads of local experiences, you can jump on and off the Dotto with ease. Plus, the trackless mini train is suitable for everyone and regular highlight for the kids. Perfect for tired little feet to take a scenic break without missing out.

Thrilled to be back

Stagecoach's Eastbourne Operations Manager, James Aunger-Third, said "We're thrilled to be back for another year of Dotto! After a great 2022, Dotto is coming back for even more fun family days out and we can't wait to welcome the community of Eastbourne back aboard."

"There's so much that you can do on a Dotto day out. Seaside dips, fish and chips, or a bit of shopping. Even if it's cruising down the harbour with an ice cream – We'll be there!"

But what can you expect from a day out in Eastbourne? Well, if you've got a history buff in your midst then

why not hop off the Dotto at *The Wish Tower*. The 73rd of the 74 Martello Towers built in the early 1800's to defend against Napoleon. After a guided tour you don't have to worry about food as the delicious offerings of *Bistrot Pierre* are right next door.

If the sea breeze is more your thing, have a classic beach day and get off at Dotto's stop by the Pier. Let the kids loose amongst Eastbourne's many shops to find a souvenir or lap up the views at the *Waterfront Café*. Whatever they want to do, rest assured that Dotto can get you there.

If you want to catch a ride, Dotto is running along the sea-front everyday from Saturday 1st of April, then every weekend until Sunday 28th May. From then, it'll run each day until October 1st 2023 (Except August 17th–20th 2023 where it will not run).

Dotto costs just £2.50 for a single ride (£1.40 for children aged 5 to 15). A 'ride' is any single journey the length of the route, or between two immediate stops and perfect to add a new experience to a day of adventures. Or, you can grab a Day Ticket, £5 for adults and £2.50 per child (ages 5 to 15) to let you and your little ones hop on and off of the Dotto as many times as you need to in one day!

Running as a turn-up-and-go service which operates on a first-come-first-served basis means pre-booking is not available for Dotto.



Image: Barry Skingle.

Why customers love Dem Shish...

DEM SHISH – in South Street – has developed a huge reputation for serving high quality food in a first-class environment.

By **Peter Lindsey**

The staff are superb – so welcoming – and the Turkish restaurant is a real favourite in Eastbourne.

Award winning cuisine

There's live music every day.

Bottomless Prosecco Brunch every Friday, Saturday and Sunday.

Two-course Lunch deal for £11.50
Mon – Fri: 12 noon until 4.00pm.

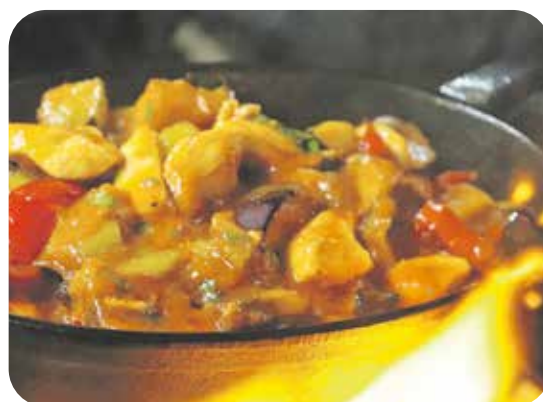
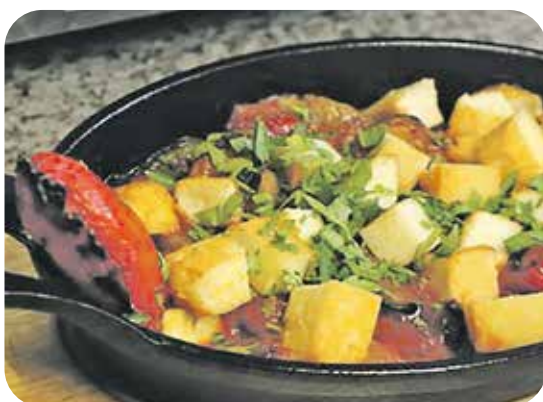


Open: Monday–Thursday & Sunday:
12.00pm – 11.00pm

Friday & Saturday:
12.00pm – 12.00am

01323 724656
www.demshish.co.uk

**85–87 South Street,
Eastbourne BN21 4LR**





Eastbourne's very own Dem Shish named the best in the country!

DEM SHISH Restaurant & Cocktail Bar won in the 'Fine Dining Restaurant' category of the British Kebab Awards.

By **Peter Lindsey**

The winners were announced at a ceremony in London attended by more than 1,200 guests.

This year the *Kebab Awards* raised money for the *Donate a Doner Campaign*, providing relief after the earthquake in Turkey and Syria.

The awards, run in association with *Just Eat* and supported by the Kebab Alliance, are in their 11th year and this year have attracted record breaking numbers of entries.

Dem Shish boss Kadir Akan attended the awards and he said it was an 'amazing atmosphere'.

He said: "It's the first time we've been to the awards, although we



were semi-finalists last year.

"We didn't expect it at all. This is the first award we've won."

01323 724656
www.demshish.co.uk
85-87 South Street,
Eastbourne BN21 4LR

EASTBOURNE MP praises *Dem Shish*

By **Caroline Ansell**

Food was very much in the frame again with the British Kebab Awards in London and our very own nominees, popular eatery, Dem Shish was in contention! They won! Their success is richly deserved and puts Eastbourne on the map once again.

My behind-the-scenes snap is just below! Just off stage our wonderful winners were interviewed at 'The Most Delicious Awards in Britain' at the British Kebab Awards!

It was brilliant to see *Dem Shish* win this prestigious award from among the best of the best in the nation.

They dedicated this great achievement to Eastbourne

as they've received such a tremendous reception from people in our town.

I was proud to be there to be the first to congratulate them and thank them for putting Eastbourne on the map.

On the night, I invited the event sponsor, Karan Bilimoria, founder of global brand *Cobra Beer*, to come to Eastbourne to taste and see! I hope to welcome him soon.

They started this brilliant new business during the pandemic which says everything about their positivity.

Not just a fabulous new business but people with real heart- you can see that in their Christmas event bringing people together who otherwise would be alone and in their recent fundraiser following the trauma and tragedy of the earthquake in Turkey.

This award is a fitting tribute to all they do.



A good day starts with a good egg

At Willingdon Park Manor Care Home, high-quality residential, nursing and dementia care are just the beginning. We believe in taking care of every single aspect of the service we provide residents, right down to the way we cook our eggs for each resident every day.

See for yourself, drop by our information suite, **11 Station Parade, Eastbourne, East Sussex, BN21 1BE**, call our Customer Relationship Manager, Emma, on **01323 306 030**, or visit **hallmarkcarehomes.co.uk/willingdonparkmanor**



We go back to Maybugs

YOUR award winning gift store *Maybugs* has become one of the jewels-in-the-crown of Eastbourne's independent retail offering. Now approaching it's 2nd Anniversary of opening on Terminus Road, we took a look around to see what had changed since we first visited in 2021.

By **Peter Lindsey**

From walking into the *Maybugs* store your initial reaction is wow, which incidentally was exactly the same reaction I had back in 2021.

It continues to look smart and inviting and very much on point

with their product offering. There really is so much to look at, from local independent producers, to big brands such as *Jellycat* and *Wrendale Designs*. Speaking of *Jellycat*, the range is huge, it looks like it has tripled in size and they have so many that I've never seen before. Talking to Greg Rose, Co-Owner of *Maybugs* he said "*Jellycat* continues to be the must have brand, we now order 12



months in advance to ensure we can secure enough stock for all our stores. It's very hard to tell what we will get and when, but we do our very best to get our hands on a particular item that a customer might request."

Award winning

Maybugs won independent gift shop of the year at last years' nationwide *Greats Awards* for retailers, and we can clearly see why, the team seem to effortlessly cater for all occasions and have sourced a real eclectic mix of products from the inexpensive to the very expensive. In term of prices, we noticed a significant change, there appears to be a wider mix of less expensive things alongside their showcase more expensive items, which are simply to die for, we particularly loved their Art Deco statement piece lamps, think I will be saving up for one.

Also in 2022 they were nominated for a Small Award in the High Street Hero category, these nationwide awards are of all UK independent retailers, and *Maybugs* got to the final six out of every independent retailer in the country, Greg said "Being a finalist in the Small Awards is a big deal, we couldn't believe we got that far, after all *Maybugs* was only four years old. We hope this year we might do one better!"

Greg continued to explain "Trade continues to be tough which is no surprise considering the economic climate, however we are thrilled to see the same customers returning again and again because they know they will find that perfect gift.

"We are eternally grateful to everyone who chooses to shop with us, weather they spend £1 or £100, as every penny counts and will ensure we are here, at the heart of Eastbourne for a long time to come."

Charity support

Maybugs has become well known for supporting hundreds of local charities, schools and fundraisers. They gave out over one hundred goody bags in the run up to Christmas for local charitable raffles and last year were the main sponsors for *Eastbourne Pride*. Greg explained to us that being part of the local community is a corner-stone part of the *Maybugs* ethos, "We love supporting the local community, of course it's not possible to support everyone or everything, but we really do consider every request and will help if we can."

In just two years *Maybugs* has grown from being a single independent store in Hailsham, to having three stores, a huge website and employing 15 people locally. *Maybugs* continues to delight and serve our town, and we think Eastbourne is all the better for it.

Shop local

Shopping independent not only keeps that particular business going, but it also helps our local economy, as they are more likely to re-invest the profits locally, employing more people and helping to improve the local area.

Maybugs is open seven days at week at 129 Terminus Road (opposite *Café Nero*) and you can shop online at [maybugs.co.uk](https://www.maybugs.co.uk)



SYCAMORE GROVE

BARCHESTER HEALTHCARE

A luxury new
care home *for you.*



You're invited to our

Open Weekend

22nd and 23rd April • 10am – 4pm

Sycamore Grove Care Home will welcome its first residents this spring, but we're offering a sneak peek to visitors by appointment only at our Open Weekend.

Offering tailored care in the very best surroundings, we'll treat everyone as an individual, ensuring residents continue their much-loved hobbies and routines, and are served their favourite dishes in sociable dining rooms.

Call our friendly team to book an appointment.

01323 372 833

Lilac Lane, Stone Cross, BN24 5NU • barchester.com/SycamoreGrove

Residential Care • Dementia Care • Respite Care & Short Breaks
Café • En-suite bedrooms • Cinema • Spa bathroom • Hair salon



A Restaurant with a view

FIND *Bistrot Pierre* on King Edwards Parade, boasting uninterrupted sea views including the beautiful *Beachy Head*.

By **Pablo Robles**, General Manager

Open for breakfast, lunch and dinner, *Bistrot Pierre* is the perfect location to enjoy British-French dishes while watching the world go by come rain or shine.

Beryl the Airstream café

Looking for a pit stop during a walk along the coastline? The outdoor

Airstream Cafe, affectionately named Beryl, offers drinks & hot and cold food to take away.

Alternatively, *Bar Pierre*, found at the front of the building offers a wide range of wines, beers, cocktails, and bar snacks to enjoy before, after or instead of a meal in the restaurant. Not forgetting the large terrace area, which is a sun seekers ideal spot to enjoy a glass of *Bistrot Pierre's* own signature wine, *Cuvée 22*.

Perfect for Airbourne

Bistrot Pierre opened in 2019 as part of the seafront investment next to the popular *Wish Tower*, is inspired by the towns relationship with the sea and passing vessels.

Since opening it's been a popular destination for locals and tourist alike and is the perfect location to watch Eastbourne's legendary Air Show.



01323 886484 | www.bistrotpierre.co.uk/locations/eastbourne/

Amazing in Eastbourne

"THE Bavard Bar really is the most amazing event." So said David Knight after his visit to the show. But don't just take his word for it. Come along and see for yourself.

By **Harry Farmer**

What to expect...

Expect the unexpected as aside from Tim B'vard and Piano Man Dan, no-one knows the subjects of the night's passions until the night!

The Bavard Bar takes place at *Towner* in Eastbourne on the

second Wednesday of every month. Three pre-booked speakers take the stage and share something they're passionate about for around 15 minutes each.

Over the years the show has been running, there have been an enormous variety of passions. From *Star Trek* to *Crop Circles*, *Kliban* to *Wassailing*, and *Secret Stones* to *Secret Nuclear Bunkers*...every month is always a joyful surprise!



Not only that...

On top of the passions shared by the night's bavarders, there are a number of comedy style improvisational games, such as the *Oojah Kappivvy* and *KP Lite*. Not to mention *Make it Stop* and the *Caption Competition*. So you're guaranteed a night of fun, as well as passion!

For more info...


Visit www.bavardbar.co.uk where you can view past 'bavards' and find details of timings and how to book tickets.



BOOM BATTLE BAR EASTBOURNE

FOLLOW US ON FACEBOOK &
INSTAGRAM FOR REGULAR UPDATES

 /BoomBattleBarEastbourne

 /boom_eastbourne

GAMES DRINKS FOOD

"BEST NIGHTOUT IN EASTBOURNE"



BAVARIAN
AXE THROWING



BEER PONG



CRAZIER GOLF



AR DARTS



AMERICAN POOL



SHUFFLEBOARDS



HAMMERSCHLAGEN



SCAN ME



FOOD & DRINKS

www.boombattlebar.com/eastbourne

Email: eastbourne@boombattlebar.com

101-102 The Beacon | Eastbourne | BN21 3NW | 01323 364354

BOOM BIRTHDAYS

For groups of 10+ birthday person battles free
Under 18's will receive a soft drink
Choice of 2 of our epic selection of games
2-3 hours duration



**BATTLE IT OUT FOR A BIRTHDAY
YOU WON'T FORGET....**

From*

£25
PER PERSON

Minimum of 6 People*

WHATS INCLUDED

2 Games
A dedicated Boom host
Free round of drinks

**CHAT TO OUR EXPERT PARTY PLANNERS TODAY TO
PLAN THE ULTIMATE BIRTHDAY GET TOGETHER**

BOOM
BATTLE BAR
EASTBOURNE



LANGNEY

living • shopping • eating

LANGNEY Shopping Centre is a true Eastbourne success story – and it's never been so popular.

By **Peter Lindsey**

This is due to the wide variety of shops in the centre – along with the added attraction of free parking.

It's attracted several new businesses in the past few years, and Centre Manager Neil Avis is confident the centre will continue to go from strength to strength.

Shops include:

- **Eastbourne MG**
- **Tesco**
- **The Toy Stop**
- **Sussex Furnishers**
- **Domino's**
- **Kube Hair Design**
- **Iceland**
- **Windmills Cafe and Bakery**
- **The Works**
- **Boots**
- **Langney Community Library**
- **White Lines Tanning**
- **Kiddicity**
- **Tony Piccante Restaurant**
- **Experience It Now Travel**
- **Churchills Fish and Chip Shop**
- **Snap 24/7 Fitness**
- **Costa**
- **Home Bargains**
and **Poundland.**

National and independent

There is also an outside car wash, *The Kingfisher pub*, and *David Neal Dental Care* is due to open shortly.

Mr Avis said: "We are delighted at the mix of shops that we have on offer here at *Langney Shopping Centre*.

"We have a wide variety of national and independent businesses which I firmly believe complement each other.

"For example, you can come here for the likes of *Tesco*, *Home Bargains*, *Poundland* and *Churchills* fish and chips.

"We also have *Sussex Furnishers*, *The Toy Stop*, *Tony Piccante* and *Windmills*, all owned independently.

"And of course, we have a car showroom – one of our latest additions – which we are very proud of."

Free parking is also an added attraction, especially as paying to park is now so expensive in the centre of Eastbourne.



Tony Piccante restaurant.



Experience It Now Travel.

Neil said: "I want to thank the local community which does support Langney Shopping Centre so well.

"And if you haven't tried us before – please pop in, have a look around. I'm sure you will be pleasantly surprised."

64 Kingfisher Drive
Eastbourne BN23 7RT
01323 761730
www.langneyshoppingcentre.co.uk



Eastbourne MG

Work from a boutique members' lounge in the heart of Eastbourne.

Grab a comfy sofa or desk to work from, and meet dynamic professionals along the way.

There's unlimited tea, coffee, cider and beer for no additional cost meaning FOUNDRY is not only a great place to escape working from home but perfect for meetings, presentations or networking with potential clients in a modern location.

Lounge Membership from
only £99+VAT per month



FOUNDRY

Foundry, The Beacon, BN21 3NW

01323 408 888

eastbourne@foundryuk.com

foundryuk.com



Event dates for your diary

JOIN us in the coming weeks for a fantastic selection of events at the Lansdowne! We have an exciting events calendar taking place over the coming weeks with further events also planned for the summer months.

By **Stephen Callis**

Our brand new website has a full 2023 events schedule published at lansdowne-hotel.co.uk

Friday 14th April – United States wine tasting

Enjoy a range of 5 different wines from across the USA served with a cold meat and cheese selection. £30 per person. Book via fizzonfoot.com

Friday 21st April – Sound of the Crowd LIVE!

Back by popular demand is Eastbourne's favourite band, *Sound of The Crowd*. Enjoy a selection of hits from the 80's with a 2 course dinner. £30 per person. Book via lansdowne-hotel.co.uk/events-offers

Thursday 18th May – New Zealand wine tasting

Enjoy a glass of sparkling wine on arrival, a white wine, 2 red wines and

dessert wine served with a cold meat and cheese plate with bread. £30 per person. Book via fizzonfoot.com

Friday 19th May – Charity Clothes Swap!

Simply bring along 5 items of your pre-loved clothing, shoes or accessories items and refresh your wardrobe at our charity clothes swap event. £8 per person. Further details at lansdowne-hotel.co.uk/events-offers

Saturday 27th & Sunday 28th May Fawlty Towers – Comedy Weekend

Join us for a weekend and be hosted by Basil, Sybil and Manuel as they attempt to run the hotel with their own *Fawlty Towers* event! Enjoy a cream tea on arrival, 3 course dinner with disco, accommodation and full traditional breakfast the following morning. £180 per person. Book via comedy-dining.co.uk

Friday 16th June – Southern Rhone Wine Pairing Dinner

Sample a selection of wines from the southern slopes of the Rhone alongside a three course dinner. £55 per person. Book via fizzonfoot.com

Friday 21st July – Loire Valley Wine Pairing Dinner

Join us for a wine journey along the River Loire in France with a three course dinner and a selection of wines. £55 per person. Book via fizzonfoot.com



Lansdowne Hotel
4–13 Lansdowne Terrace
King Edward's Parade
Eastbourne BN21 4EE

www.lansdowne-hotel.co.uk
01323 725174
enquiries@lansdowne-hotel.co.uk
Facebook Instagram @lansdownehotel



Lunchtime Rapido Menu

Rustico[®]
Neapolitan Street Food

Looking for a delicious but inexpensive lunchtime bite? Our lunchtime Rapido Menu delivers just that! You can enjoy any one of our Neapolitan Street Food dishes from the menu for just £4.95, including vegan, vegetarian and gluten free options! Drop by and pay us a visit at Little Chelsea, Eastbourne.

Available Tuesday to Friday, 12pm - 3pm
(excludes bank holidays and school holidays)



ONE DISH
£4.95

☎ 01323 576767 📍 **53 South St, Eastbourne** 🌐 **www.hellorustico.co.uk**



To enjoy a Rustico[®] at home, order via our website & save £££ (Compared to using other online ordering platforms)



Dr Anne Trewick is a registered Clinical Scientist with 35 years' experience in the NHS and a proven track record in scientific research.

"After spending my entire career working for the NHS I am left in no doubt that diet and lifestyle are the keys to health and wellbeing."



"My mission is to cut through all the hype surrounding nutrition and health and provide sound advice in a simple and effective way."

Through tailored nutritional advice, I can help you with:

- Weight management
- High blood pressure
- Type 2 diabetes
- Low energy levels
- Mental wellbeing

Trewick Nutrition is a new nutritional consultancy based in Eastbourne
www.trewicknutrition.co.uk Email: info@trewicknutrition.co.uk

Did you promise yourself you would lose weight this year, or to start eating more healthily?

Chances are you are struggling to make headway – don't be disheartened, you are not alone!

There are so many new diets being promoted, and so much conflicting advice, it's difficult to know where to start.

If you've tried to lose weight before and not succeeded, maybe you were taking an approach that was wrong for YOU!

A diet that works for one person will not necessarily work for another.

The key to achieving and maintaining weight loss lies in YOU developing a new relationship with food that suits YOU.

1. Learn how to control your own calorie and nutrition intake.
2. Eat the foods that support your own nutritional requirements.
3. Plan ahead – you will eat more healthily AND you will save money!



Be who you've always been... a star baker

At Bowes House care home being a star baker doesn't stop when you make the journey into care. Our dementia specialists support each resident to live life as independently as possible. Bring your life with you to a place you can call home.

Award winning, person-centred care for over 40 years.

If you're considering care for yourself or a loved one call **01323 917018**.



Trusted to care.

Bowes House care home
Hailsham
careuk.com/bowes-house

care UK



Awards celebrate healthier workplaces

BUSINESSES committed to developing healthier and happier workforces have been celebrated at a special event.

By **Peter Lindsey**

25 businesses across East Sussex were presented with their Wellbeing at Work awards at the first annual Wellbeing at Work Conference and Awards event.

120 people from 59 different organisations joined Darrell Gale, Director of *Public Health for East Sussex*, in Eastbourne.

East Sussex County Council's Wellbeing at Work Programme was launched in the autumn of 2021.

The scheme works with employers to share resources and deliver training, as well as providing an accreditation scheme which supplies a framework to businesses, to help boost the health and wellbeing of employees.

Industrial Construction (Sussex) Ltd is the first construction company in East Sussex to be part of the *Wellbeing at Work Scheme* and was awarded the *Small Business Bronze Award* in January 2023.

The wellbeing initiatives the company adopted include regular on-site Toolbox Talks for staff and subcontractors on topics such as mental health and musculoskeletal health, and monthly Lunch & Learn

sessions where staff come together to refresh their skills and talk about general wellbeing.

Feilo Sylvania achieved the *Wellbeing at Work Bronze Award* for workplaces with 50 plus employees with innovative interventions such as an active travel map produced in partnership with *Living Streets* and regular self-led walks around the industrial estate in Newhaven, where they are based.

Cllr Rupert Simmons, lead member for economy at *East Sussex County Council*, said: "It has been fantastic to see so many local employers join our *Wellbeing at Work* scheme since we launched the initiative.

"Happy and healthy employees are key to the success of any business and I am delighted to see so many local businesses awarded for their commitment to improving the health of their workplaces.

"Investing in employee wellbeing through an awards scheme such as this can improve employee morale, motivation and productivity, as well as reduce absenteeism and staff turnover, and I would encourage all local businesses to join the programme."

More information about the programme can be found at www.wellbeingatwork.eastsussex.gov.uk



Mobility Scooters From **£729***



Wheelchairs from **£189***



Riser Recliners from **£499***



Stairlifts Installed from **£1,890***

Eastbourne Showroom

336/338 Seaside
Eastbourne
BN22 7RJ
(Next to Tesco Express)



01323 484 060

Mon-Sat 9^{am}-5^{pm}

*Prices quoted exclude VAT & are available to customers with a long term medical condition.

www.clearwellmobility.co.uk

FREE 2022 Brochure

NEW!

BOUFR

Name _____

Address _____

Postcode _____

Post to: FREEPOST CLEARWELL MOBILITY



TRANSFORM YOUR HOME

Completing over 1000 projects over the last 25 years, The Builders Club Ltd, has provided a first class service throughout Sussex.

Refurbishments, extensions, loft conversions, garden rooms, kitchens, bathrooms, driveways, repointing, decoration, rendering, plastering, structural works, Cedar cladding, conservatories, orangery's.

Building new houses to Code 3 sustainability and the full restoration of the iconic Belle Tout Lighthouse in 2010, filmed and televised on Channel 5's 'Build a New Life' in the Country.

We have the experience, innovation and the service to complete your project to a high standard that we will be proud of.

**CONTACT US NOW TO DISCUSS
YOUR PROJECT**

The
Builders Club
For All Your Building Requirements



GARDEN ROOMS

Adding much need additional living space in to your home, often cheaper than an extension, our fully bespoke garden rooms are fully insulated and completed to an exceptionally high quality and standard.

As an official Cedral Cladding Installer and Millboard Decking installer, our design team can create your perfect living space.

Cedral cladding offers a transformation far superior to many other cladding systems, with a 10 year guarantee and a variety of colours and designs. Cedral cladding can bring much needed weather proofing and a vibrant style to your home.



CEDRAL
Timelessly beautiful facades

EXTENSIONS

Extensions can provide a anything from a small additional space enlarging a room or kitchen to opening up your home to create a completely new design and living spaces, our bespoke extensions can create your dream.

Our design and engineering team can help you realise your project in the comfort of our showroom in Seaford.





BATHROOMS AND KITCHENS

Our Bathroom fitters are accredited by the Guild of Master Craftsmen and the Federation of Master Builders so you are in safe hands.

Your kitchen may just be the epicentre of your home so you need kitchen fitters who can make it robust, comfortable and stylish.

Our experienced and reputable kitchen fitters can do just that. With years of experience, we will ensure that your kitchen is built to last. We cater for all budgets, just let us know what you have to spend and we will work with you to create an affordable option that wows visitors and keeps the family happy too.

Full design service available.

Visit our showroom and chat to one of our design team.



WINDOWS AND DOORS / BIFOLD DOORS

UPVC and Aluminium, Bespoke, Timber.

'Fensa' registered and comes with a 10 years insurance backed guarantee.



ARCHITECT AND ENGINEERS DRAWINGS

Design to completion, planning permission.

Building regulation applications.

Structural works and calculations.



PATIOS AND DRIVE WAYS

The Builders Club has its very own porcelain patio and specialist drive way team.

Fantastic offers for the new year for all customers.

From full garden restorations to refreshing tired gardens.

Call now for free quotation.



The Builders Club provide high-quality building services for our valued clients. Our team goes above and beyond to cater to each project's specific needs. We continuously strive to improve, not only our service, but also our range of services to our customers. To find out more about our builders or to arrange a quote, get in touch today.



Head office: 20, Sutton Park Road, Seaford, East Sussex BN25 2DD

01323 490283 | 07951 160465 | thebuildersclub@gmail.com | www.thebuildersclub.co.uk



**GINGER &
SANDERS**
PROPERTY SALES & LETTINGS

Est. 2012



Eggcellent service!

Ginger & Sanders
wishes everyone a Happy Easter

Thinking of selling or letting?

Contact Ginger & Sanders,
your local Seaside and Roselands area estate agent.

- Eye catching For Sale and To Let boards
- All properties on Rightmove, Zoopla and OnTheMarket
 - Independent agent
 - Over 90 years' experience

“passionate about property”

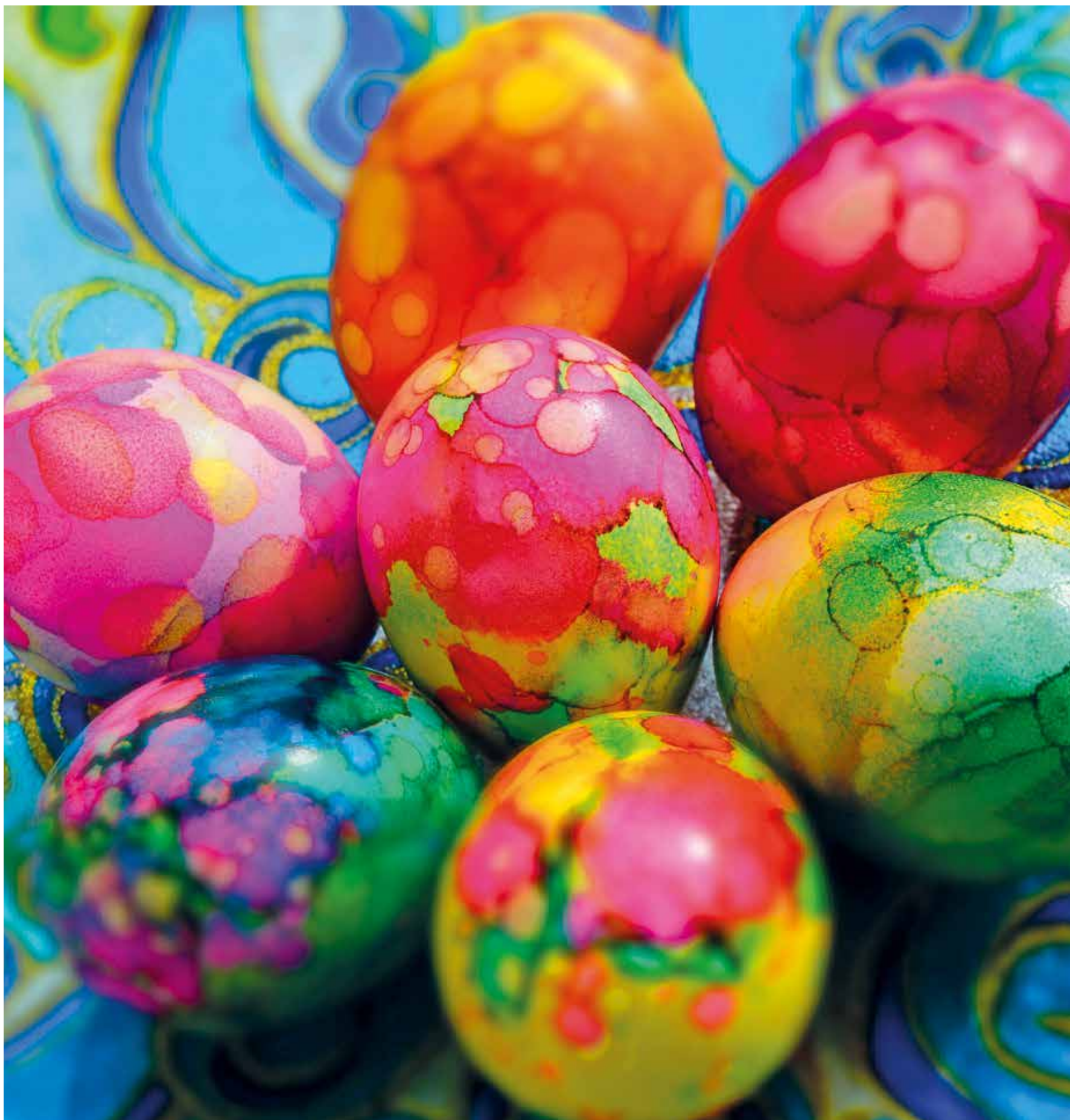
185a Langney Road, Eastbourne, East Sussex BN22 8AH

01323 701702

info@gssalesandlettings.com | gssalesandlettings.com

Contact Daniel, James, Lisa or Peter for a **FREE**,
no obligation market appraisal.

The Arts



THE BAVARD BAR A delightful blend of TED, comedy & Radio 4. Sort of. **WHERE? TOWER Eastbourne**

WHEN? 2nd Wednesday, every month
Doors open 7pm

TICKETS £12 www.bavardbar.co.uk
www.towner.gallery/bavardbar



ROYAL HIPPODROME THEATRE



Rhiannon
Tribute to Fleetwood Mac
Sat 25 March



Ratton School
RENT School Edition
Wed 29 - Fri 31 March



Jimmy Cricket
50 Golden Years
Sat 1 April



Easter Pantomime
The Wizard of Oz
Wed 5 - Mon 10 April



Total Pop Party
The Scream & Shout Tour
Wed 12 April



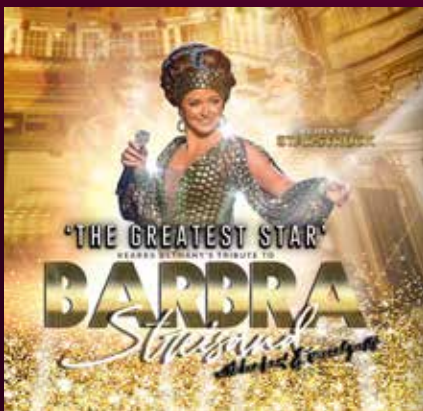
The Doris Day Story
Que Sera Sera
Fri 14 April



ELO
Electrik Live Orchestra
Sat 15 April



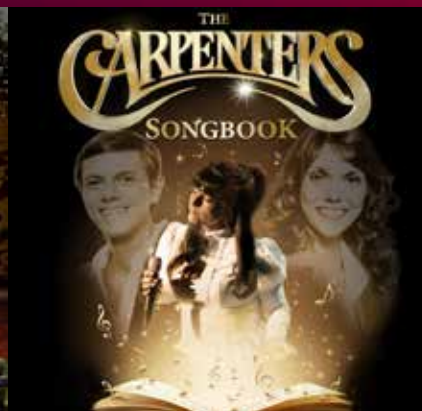
The Betty Legs Diamond
Show
Sun 16 April



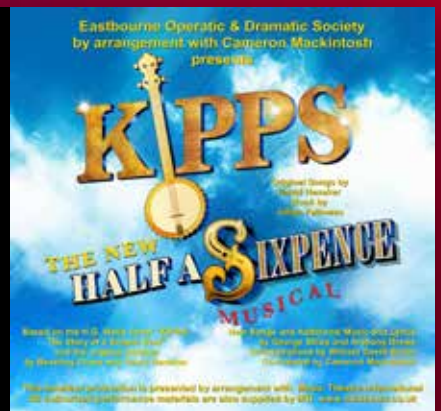
The Greatest Star
Barbra Strisand Tribute Show
Thu 20 April



Let Me Entertain You
Tribute to Robbie Williams
Fri 21 April



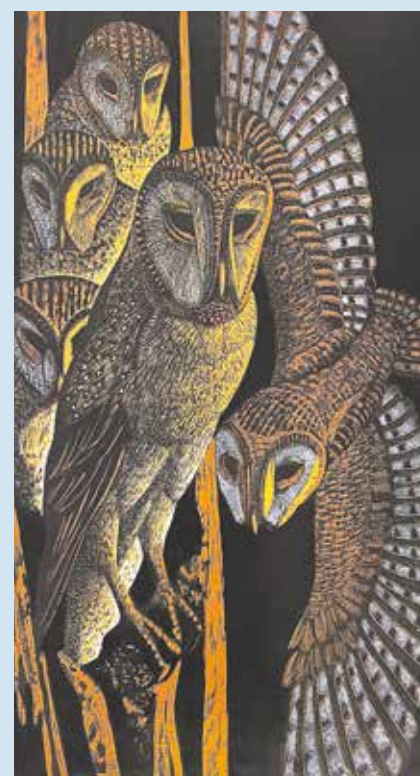
The Carpenters
Songbook
Sat 22 April



EODS: Kipps - The New
Half A Sixpence Musical
Wed 26 - Sat 29 April

Box Office 01323 802020 | royalhippodrome.com
106-114 Seaside Road, Eastbourne, BN21 3PF

Owls, Horses, Puffins and Partridges



A LOVE of wildlife & nature seen through the work of printmaker James T.A. Osborne.

By **Emma Mason**

An exhibition of prints and paintings by James T.A. Osborne (1907–1979), will be on from 6th April to 6th May 2023 at the Emma Mason Gallery.

Osborne was a master printmaker and engraver. Born in Sussex he attended *Hastings School of Art*

and later the *Royal College of Art, London*. A Rome Scholar and one of the founders of the *Society of Wildlife Artists*, Osborne's work is collected by museums across the world including the *V&A Museum, London* and *The Ashmolean, Oxford*.

Osborne made wood engravings, linocuts and woodcuts illustrating nature and wildlife. Throughout his career, Osborne constantly experimented with all forms of

printmaking and his editions never exceeded thirty.

All work in the exhibition will be for sale. The works are the last available from the artist's archive.

01323 727545
www.emmamason.co.uk
Emma Mason Gallery
21 Lushington Lane,
Eastbourne BN21 4LJ

THE MAKERS DIRECTORY

THE Makers Directory is the online directory of all the makers and artists that work in and around Lewes and Eastbourne.

By **Harry Farmer**

Use The Makers Directory to search for the perfect hand-made gift, find a craftsperson who will repair a much-loved item, or discover someone who is able to teach you a new skill at a workshop.

It's a brilliant way to discover, support and buy from your local makers!

You can keep up with their latest news by following them on *Instagram* **@themakersdirectory**

themakersdirectory.co.uk

FEATURED ARTIST **Stephen Edmunds**

I'm Stephen, and together with my pup Harley, run Harley & Steffan Woodcrafts. I design and produce handmade products using offcuts from a variety of hardwoods, such as oak, walnut & birch ply. It's important to me use local and national providers, to save and reuse these beautiful pieces of timber, that would otherwise be burnt or end up in landfill.

In my small back garden workshop, I currently make a contemporary range of desk organisers, bookends, tealight holders and small pots. I'm inspired by the simple shape and clean lines of Scandinavian and Japanese design, and love to let the natural grain and

beauty of wood shine through in my work. I try to encompass this in all my pieces, to make items that are both beautiful and practical.

2022 has been an amazing journey and huge learning experience for me. After receiving such a positive response to my work at makers fairs and online, I am encouraged in my plans for 2023. I'm very excited to be collaborating with a local ceramicist for a new spring range of homewares!

A selection of my work is available in a number of small independent retailers, and I hope to work with more stockists going forward. This gives me the freedom to accept one-off commissioned pieces, and I'm always very happy to create bespoke items!

I'm excited to be part of the *Makers Directory* and am looking forward to meeting lots of local makers for inspiration and future collaborations.



www.themakersdirectory.co.uk/directory/harley-and-steffan

Email: harleyandsteffan@gmail.com
 Web: www.folksy.com/shops/HarleyAndSteffan
 Instagram: [@harleyandsteffan](https://www.instagram.com/harleyandsteffan)

Eastbourne's Jazz & Blues Festival

THE demand for Jazz in the UK has never been bigger!

By **Harry Farmer**

There's a new outdoor festival on The Western Lawns in July, we chat to Harry Farmer, one of Festival Events management team and ask, "Why is Jazz so big at the moment and seems to be back with a vengeance?"

"I don't think it has ever gone away... when you start to look around the country, small jazz clubs and venues

are popping up everywhere... the quality of musicianship is immense.

"Interest has never been so healthy, just look at the UK's Jazz & Blues venues, *Ronnie Scotts* and *606* in London, *Pizza Express* now have three Jazz venues in London. In Brighton there's *The Verdict*, Brighton's only purpose built Jazz venue, you now need to book months in advance to get in."

"So do you think Eastbourne is ready for a major Jazz festival?"

"Most definitely. You only have to see the reaction we have had already from Eastbourne, it's been fantastic.



Sultan Stevenson.



Sarah Jane Morris.

"The whole event will be in a marquee. So what ever the weather throws at us, the Jazz & Blues will be GREAT!

"We are also excited about our Aftershow Party on Saturday night with Hastings based **DJ Wendy May (Locomotion)** and Eastbourne's **DJ Fergus** in *The Gold Room* at the *Winter Garden*."

This festival is already shaping up to be *the* place to see the very best international touring artists plus local jazz and blues bands this summer!

WE have something for everyone with **Jay Rayner & his Sextet**, **Sarah Jane Morris** singing the songs of John Martyn, **Ian Shaw : When Bowie Met Joni** and **Sultan**

Stevenson – the fastest emerging young artists on the London Jazz Scene.

The Full Circle Quartet – with Terry Packs inspired by the sights & sounds of The South Downs. **Oye Santana – The best tribute band!** **Chris Batchelor's Pigfoot Play Ellington** – an imaginative reworking of iconic compositions

Plus exciting local bands, **Grace & Danger**, **The Jazz Groove Collective**, **Stormy T & Bluesman Lane**, **The Ray Russell Band** and **The Light Keepers**.

To book tickets, please go to: www.seetickets.com where you can buy one day, two day weekend tickets and tickets for the Aftershow party.

JAZZ

BLUES

festival

JAY RAYNER SEXTET
SARAH JANE MORRIS : SWEET LITTLE MYSTERY
IAN SHAW : WHEN BOWIE MET JONI
 OYE SANTANA • PIGFOOT PLAY ELLINGTON
 SULTAN STEVENSON • RAY RUSSELL BAND
 THE FULL CIRCLE QUARTET AND THE SOUTH DOWNS SUITE
 THE JAZZ GROOVE COLLECTIVE • THE LIGHT KEEPERS
 GRACE & DANGER • STORMY T & BLUESMAN LANE

See TICKETS
 29th - 30th July 2023 Western Lawns Eastbourne

In Perspective in Polegate

HAVING been in East Sussex for 40 years, last month *In Perspective Hobby Shop* relocated to the High Street in Polegate.

By **Harry Farmer**

A specialist shop selling all kinds of supplies, materials, tools and kits for a multitude of different creative hobbies, *In Perspective* is definitely worth a visit.

The range of art supplies includes the basics for beginners and younger painters whilst also catering for the

more advanced and professional artists. The variety of craft materials has all sorts of kits and supplies to inspire anyone to take up a new hobby. For model makers, the array of *Airfix* and plastic model kits, *Warhammer* miniatures and paints, scenery supplies and tools has got everyone covered. In addition to all the enticing items on sale, *In Perspective* also has a bespoke picture framing service and holds regular card making classes.



Owners, Jo and Ray are enjoying their new location and are very happy to be back on the high street, literally! The shop is already proving popular with the local community and the many customers who have followed them to Polegate. The new location has easy access from Eastbourne and the surrounding areas by both car and public transport.



In Perspective has always had the reputation of being an Aladdin's cave, each time you visit you will find something new to inspire your creativity.

info@inperspectiveart.co.uk
01323 483600
www.inperspectiveart.co.uk

Free music places

AUDIOACTIVE is a Sussex based youth music organisation supporting over 1000 young people annually.

By **Tom Hines**

Audio Active have a few places still available on their FREE Holiday Activity and Food music-making Sessions in Eastbourne & Newhaven during the Easter holidays.

It's open to young people aged between 12–16 who are eligible for:

1. In receipt of benefits-related free school meals (FSM).
2. Known to CAMHS.
3. Those with SEND (with an EHCP, statement or involved with ISEND).
4. Young Carers.
5. Working with the Schools Mental Health team.

6. Gypsy, Roma and Traveller.
7. Those known to or working with social care professionals (Looked After Children, Children in Need, Children on a CP plan, Working with Supporting Families or Early Help).
8. Ukrainian Refugee families.

Professional artists

Professional artists will be leading the project that will provide free food and an opportunity to rap, sing, produce and record music.

AudioActive HAF in Eastbourne: 4th, 5th, 6th, 7th Apr (11am–3pm) at Leaf Hall, 51 Seaside, Eastbourne BN22 7NB.

To find out more and to sign up please visit:

www.eequ.org/audioactive

JOIN US FOR 3 HOURS OF FUN AT OUR WARM VENUE!

NEW SPRING ART CLASS

TREAT YOURSELF OR THE PERFECT GIFT

the Seasons Art Class

- Fun, easy, step-by-step
- Develop impressive new skills in a warm and friendly atmosphere
- 3 hour sessions, morning or afternoon, for 3½ months
- Learn how to make Art you can give as gifts or sell at craft fairs

14 week course. Discover how to paint faces, figures and stunning landscapes. Learn artists' secrets needed to create beautiful pieces of original art.

Even if you've never picked up a brush before, we make it easy and fun! This is an extremely enjoyable way to develop your creative side, and really enjoy the next few months.

ABSOLUTE BEGINNERS TO IMPROVERS... JUST LIKE YOU!

NEW COURSE

01323 335056
THE CAVENDISH HOTEL EASTBOURNE

SA0852

So much more at Marmalade

CAMPER Marmalade... back with an even more comprehensive lineup of top acts ranging from amazing tribute bands to some of the hottest DJs in the country.

By **Andy Thomas**

Festival Events have taken Camper Marmalade to another level this year, it's an event not to be missed. More live music, more food stalls, more stall holders... more of everything!

For the whole family

Starting the family-friendly weekend off on Friday 30th June are **DJ Dunk** and

DJ Nicky B. They will be warming the *Marmalade* crowd up until day one headliners **Fat Freddie & The Queens** take to the stage.

The party continues on Saturday with a stunning line up of music including **The RedCatz, Ska-Per, The Pat Butchers, DJ Fergus, Large 90's** and **UK Fleetwood Mac**, then it's time to get those dancing shoes back on for our main headline acts, **Dave Pearce** and **Brandon Block**... what a day it's going to be!



After a hectic Saturday, a laid-back Sunday is required and we have the most appropriate selection of music for you, including **The Watson Brothers, Tin Whisky, Mutiny at the Beach, P45 Ska Opera band** plus **Fat Charlie and Southbound Train.**

David Monckton, one of the event organisers said: "This year is going to be absolutely amazing, we can't wait!"

"We have some of the best DJs in the country performing and a brilliant mix of music from some truly exciting bands. There is definitely something for everyone to enjoy."

Special event

Also added this year is a 180-foot inflatable assault course where we will be holding our special *Marmalade Olympics*. This kids and adult tournament will be super popular. Keep a close eye on our social media for more details.

Tickets are available from **www.seetickets.com**

You can book a one-day, two-day, or a weekend pass. We also offer FREE entry to all under 16's.

📷 @campermarmalade
www.campermarmalade.co.uk

**JUN 30 ★ JUL 01-02
2023**

Camper Marmalade

SCAN ME

FLEETWOOD MAC ^{UK}

BRANDON BLOCK

the Pat Butchers

LARGE 90's

PROUDLY SPONSORED BY:

Signtek Sign Makers EST 1990

dj dunk

Nicky B

FAT FREDDIE AND THE QUEENS

See TICKETS

WWW.CAMPERMARMALADE.COM

BRAMLEY FARM BAY TREE LANE POLEGATE EAST SUSSEX

SKAPER



Local artist paints pop art of pop icons

BOBBY Guy is a contemporary artist that started painting during the pandemic and has since become an international success, with clients commissioning portraits of his work, from around the world.

By **Tom Magnini**

He began painting at the beginning of lockdown, after buying art supplies, before teaching himself how to restore old frames and fit canvases.

Bobby grew his business online, having posted on social media, to display his first painting of Bobby Moore. He was offered money for his work and to date has sold close to a hundred paintings internationally, since the beginning of lockdown. He has set up a local studio, where he paints one of a kind commissions.

Bobby attended *Cavendish School*, before spending 25 years in North America working as a publicist for a major record label and concert venue owner. He has worked alongside Eminem, Amy Winehouse and The Killers, amongst others over the years. He credits his late art teacher at *Cavendish*, Mr Chant and thinks fondly of him while he paints after being a big influence on his formative days.

Popular pop icons

He receives various commission requests, but usually paints pop icons of yesteryear and was asked to paint David Bowie for one of Sting's sons for his beach house in Malibu. He has also supplied paintings to an acting school in New York and has collectors in Melbourne, New Orleans and across the UK, with one collector owning 16 of his paintings to date. He is currently working on a big Madonna painting for a collector in Burgess Hill.

His work can be found in art galleries from Brighton to Glasgow, but he is more at home with painting commissions. Each painting comes with a signature wax stamp which is colour coordinated for each piece and includes a signed certificate detailing the artwork.

Bobby is hoping to exhibit his paintings locally and hopes this year to find the right place to showcase his work.

For more information or to request a commission please visit: **Bobby Guy Art** on *Facebook* and *Instagram*.

Artists Spring Open Houses and Studios

EASTER weekend and the artists and designer-makers of Eastbourne will once again be welcoming visitors when they open their homes and studios to show a mix of artwork and crafts to the public.

By **Gail McKay**

Altogether there will be twenty-eight artists' homes, studios and galleries putting on a special show over the Easter holiday weekend, 7th, 8th, 9th and 10th April 2023.

Event organiser and professional artist Julian Sutherland-Beatson says: "It's a great way to see artwork in a domestic setting and for artists to engage with visitors getting feedback about their work".

The Open Houses

Come to see Sheena Bourn in Silverdale Road, with her colourful painted canvases of *Eastbourne Pier*, both large and small, alongside studies of Holywell's rock pools and waterflows.

Lindy Dunbar and Julian Sutherland-Beatson, drawings and paintings, are at the *Birley Centre* and Fiona Morrison and Anne Barrell at 87 Willingdon Road displaying paintings and ceramics inspired by the sea.

John Warren, pottery and Helen, paintings and textiles, plus eight guest exhibitors will be at the *Big House*, showing a variety artwork in their Arts and Crafts home. Included painters Ruth Backsall and Miranda Pennington together with jeweller Lynda Lindfield, glassmaker Anthony McIntosh, Tania Long recycled goodies, and ceramicists Justine Munson, Julie Snowball and Barbara Butterworth.

YouTube

A new venture this year is Grace Powell's entry, not an open house but an animated film to be viewed on *YouTube!* Eerie, enchanting, eclectic, esoteric, Grace Powell creates a magical world of exquisite characters who have extraordinary adventures where almost anything can happen.

There is lots to see over the Easter weekend. All venues are free and most open all four days, typically from 11am to 5pm but opening days and times do vary. To find out more pick up a brochure from *Eastbourne Tourist Information Centre* or from *Towner*, libraries, and participating venues or online at www.eastbourneartists.com/open-houses





JOIN OUR
LOYALTY SCHEME
**AND ENJOY
REWARDS**

*Get ready
for sunnier
days ahead!*

Spring has sprung at UpCountry

Get your garden in top shape for those warmer months. We supply everything you need to transform your outdoor space including beautiful plants, tools and top-quality furniture.



NEW Furniture

Our 2023 outdoor living range has landed in store. Discover contemporary and traditional garden furniture, fire pits and garden decor.

Now accepting
Clearplay!



Bedding Plants

Create show stopping hanging baskets and containers!

*Pansies, Violas, Primroses,
Geraniums, Petunias & more!*

6 Pack
Bedding Plant **£3.99**



Exotic Trees & Shrubs

Discover our mediterranean tree range, along with ornamental shrubs.

*Olive Trees, Bay Trees,
Bamboo, Palm trees, Fruit
Trees, and more!*

7 Litre
Olive Bush **£29.99**

Visit us today!

**Bakehouse Kitchen - Gardening
Farm Shop - Pets & Equine**

Dittons Road, Stone Cross
Pevensey, BN24 5ET
01323 488188

www.upcountrystorehouse.com



Green and pleasant

DARE I say it? The cold chill of winter has passed, spring is finally in evidence, there are daffodils and flowering trees beginning to bloom, however we can expect the inevitable April showers this month, I'm sure, with hopefully, a few sunny days as well but do keep an eye out for frosts. April also brings with it longer days and occasionally milder weather. Now is the perfect time of the year to undertake outdoor painting jobs such as exterior walls, garden fences and to give your garden furniture a new lease of life with a coat of varnish, paint or a good scrub down.

By **Geoff Stonebanks**

Other April jobs might involve giving your greenhouse a thorough scrub with hot soapy water to get rid of pests and diseases and let in more light. If you have hard landscaping then drag out the pressure cleaner and refresh your patios, drive and path. This month sees the Easter weekend too, from the 7th to the 10th, giving us all a long weekend to spend in the garden. Let's hope the weather is kind to us so we can get on with the jobs in hand.

National Garden Scheme

There are a few gardens opening for the scheme throughout April, notably *Butlers Farmhouse* in Herstmonceux on 1st and 2nd, *The Garden House* in Brighton on the 21st and 22nd, *The Oast* in Mayfield on the 22nd and 23rd, *Fairlight End* in Pett on 26th, *Banks Farm* in Barcombe and *King Johns Lodge* in Etchingham both on the 29th and 30th, to name but a few. Check out all the details at: www.ngs.org.uk. For regular garden visitors, remember that there are many additional gardens that only open for the scheme by arrangement only. Check those, local to you, on the website.

My to do list at Driftwood

Last month, I completed the dreaded task of pressure cleaning all the hard surfaces in the front and back garden, in preparation for dressing the plot with my vast collection of garden art and sculpture, much of which is put away in the garden shed and summer house to protect it from the winter weather. I love this time of the year starting to pull it all out as I tend to forget what has been stored. It is always a treat to rediscover pieces, clean them up and find them a home outdoors for the summer months. I try and relocate them in different places each year, as it really helps to give a different feel or vibe to the garden, really important in the case of returning visitors, who don't want to see the same vistas each year!

It never ceases to amaze me what I have, much of which has been curated over the last 25 to 30 years. This stage of my garden preparations always seems to me like dressing a film set, creating little set pieces, combining plants, shrubs and art into one.

As mentioned above, I shall be transferring my collection of succulents from the greenhouse into the garden for the summer and will then need to give it a thorough clean. Each year I seem to amass more and more of these interesting plants. The house certainly breathes a sigh of relief, as many are also stored in both the front and back porches of the house too.

Arlington Bluebell Walk 2023

The Bluebell Walk is managed by John McCutchan with the support of *The Bluebell Walk Advisory Group*, comprising of members of his family and others committed to ensuring that the *Arlington Bluebell Walk* (pictured

in header) continues to raise money for local charities. This year it celebrates its 50th year. It could not operate without the participation of the many local charities, who welcome their visitors and offer them delicious refreshments every day they are open. It has been opening since 1972 and over time has developed into seven interesting walks over three working farms. A circular walk of 1100 metres or 2/3 a mile in *Beatons Wood* has been made suitable for wheelchair users. This is where you see white anemones followed by the vistas of bluebells, established over centuries. On this walk there are seats for you to enjoy the peace and tranquility of this oak and hornbeam ancient wood. Along the walks there are signs illustrating the flora and fauna of the countryside for your information. At neighbouring *Parkwood Farm* (2.75 mile walk there and back), milking of the large dairy herd can be seen from a special viewing gallery every afternoon between 3:00pm and 5:00pm.

To date, the walk has raised an incredible £890,000, pushed to £1.5m, if account is taken of inflation over that period. Full details on dates and prices can be found at: www.bluebellwalk.co.uk

Read more of Geoff's garden at: www.driftwoodbysea.co.uk

Geoff's garden, Driftwood has appeared on BBC2 Gardeners' World, was a finalist in Gardeners' World Magazine Best Small Space and a finalist in Lewes District Business Awards 2018 as 'The Tourist Destination of the Year'. Read the amazing 5-star reviews on TripAdvisor. Amazing feature in Coast Magazine and an American magazine, Flea Market Garden Style. Read all about Geoff's trips to Buckingham Palace and Royal Garden Party in 2018 and his work for the community.

NEW
COURSES

Eastbourne

French Cooking	60249-02	18/04/23 - 16/05/23	£75
Tai Chi	60281-01	18/04/23 - 23/05/23	£45
Floristry for Special Occasions	60284-01	18/04/23 - 13/06/23	£110
Beginners & Improvers Drawing	60609-01	18/04/23 - 27/06/23	£100
Tap for Beginners	60693-05	18/04/23 - 27/06/23	£75
Acting Techniques: Beginners & Improvers	60694-05	18/04/23 - 27/06/23	£100
Digital Photography Continuation: Developing Your Skills	61021-02	18/04/23 - 27/06/23	£140
Ceramics Personal Development	60235-02	19/04/23 - 17/05/23	£128
Patchwork & Quilting Short Course	60273-01	19/04/23 - 14/06/23	£85
Plaster Mould Making	60274-02	19/04/23 - 17/05/23	£77
Tai Chi	60281-01	18/04/23 - 23/05/23	£45
Upholstery Part 2: A Follow-On Workshop	61015-01	19/04/23 - 28/06/23	£100
Digital SLR Photography for Beginners	60241-04	20/04/23 - 15/06/23	£80
French Conversation	60248-01	20/04/23 - 25/05/23	£45
Indian Head & Shoulder Massage	60257-01	20/04/23 - 18/05/23	£50
Make a Mosaic	60270-01	20/04/23 - 15/06/23	£86
Flavours of Mexico	61044-01	19/04/23 - 17/05/23	£50
Ceramics Personal Development	60235-01	21/04/23 - 19/05/23	£128
Plaster Mould Making	60274-01	21/04/23 - 19/05/23	£77
Wellbeing Taster Class	60285-01	26/04/23 - 24/05/23	£50
French Language Taster	60252-01	17/05/23 - 28/06/23	£45
Vegan & Vegetarian Cookery	60282-02	06/06/23 - 27/06/23	£60
Slip-Casting & Press Moulding	60277-01	09/06/23 - 07/07/23	£135
Podcast Follow-On	60714-06	09/06/23 - 30/06/23	£60
Ceramic Tile Making	60234-02	28/06/23 - 19/07/23	£88
Pottery for the Complete Novice	60222-05	30/06/23 - 21/07/23	£88

Lewes

Jewellery	60533-03	18/04/23 - 27/06/23	£150
Creative Printmaking Workshop	60187-03	19/04/23 - 28/06/23	£145
Tap for Beginners	60693-04	19/04/23 - 28/06/23	£75
Acting Techniques: Beginners & Improvers	60694-04	19/04/23 - 28/06/23	£100
Drawing & Painting: Beginners & Improvers	61032-01	20/04/23 - 25/05/23	£60
Pottery: Summer School	61033-01	10/07/23 - 14/07/23	£220

Adult Courses

at East Sussex College

Enrol now, quoting the course code!

Call 030 300 39699 or online at adult.escg.ac.uk

Scan the QR...

to view our new
2022/23 adult course
guide online.



FREE

04/23 Issue 034
April 2023

YOUR REGULAR
BOURNEFREE IS INSIDE
WITH THE BEST OF
EASTBOURNE FEATURE

www.bournefreelive.co.uk



Bournefree



RAINBOW 2023 RUN

Everyone's
invited

Saturday 20th May – Nash Street Farm, Hailsham

St Wilfrid's Hospice Rainbow Run takes place on Saturday 20th May at Nash Street Farm in Hailsham. It's promising to be a fabulous afternoon of fun and colour thanks to a dedicated team of volunteers and sponsors, and all funds raised will help to enable patients at the hospice to live well at the end of life.

Participants will be painted in all seven colours of the rainbow as they make their way through the paint stations along the 5km course. If they're not covered enough by the time they cross the finish line, the event finale is a fantastic Paint Party! The hospice team would like to say a special thank you to the headline sponsor, The Park Lane Group.



THE
PARK LANE GROUP

Sign up for this 5km, rainbow coloured,
afternoon of fun at stwhospice.org/rainbowrun



St Wilfrid's Hospice

St Wilfrid's Hospice calls for help to fund equipment



St Wilfrid's Hospice

St Wilfrid's is calling out for support to buy the equipment needed to help reduce patients' pain and to give them the strength, mobility and independence to do what they love, for as long as possible.

The hospice provides free end of life care to local people and 70% of their funding comes from charitable donations. As well as nursing and medical care, a range of therapies are available to help patients to live well. Bereavement support is also on offer to all adults and children in the catchment area.

**St Wilfrid's Hospice
Equipment Appeal**

Anna, a physiotherapist, talked about the difference that specialist equipment can make.

"While the nurses look after our patients' medical needs, I spend my time helping those in our care on their journeys to reach their goals – whatever they may be. For example, one patient wanted to be mobile enough to walk her dog, who was a very enthusiastic retriever! I needed to make sure she'd have the strength to walk him without being pulled over. Using our specialist equipment and rehabilitation exercises, we gave her this priceless moment of independence and normality.

We need a range of equipment including TENs machines, which use low voltage currents to treat pain, special wide wheelchairs which allow patients who have



wires and tubing attached to get out of their rooms and choose how to spend their days and specialist tablets, loaded with apps including breathing exercises to help patients

who are short of breath to have better control over their breathing."



This is more than just equipment. It is normality, independence, and moments free from pain for our patients.



Furnish your home for less

From beds and sofas to curtains and cushions, the St Wilfrid's Home Store at 56 Langney Road, Eastbourne, has a huge range of furniture and home wares to suit all tastes and budgets.

Could you volunteer?

If you have a few hours to spare each week, why not help your local St Wilfrid's Hospice store raise vital funds? To find out more please contact retail@stwhospice.org or pop into your local store.

**Free
Parking**
at the side of
the store



Could you help patients at St Wilfrid's?
To see the full equipment list
and make a donation visit
stwhospice.org/equipmentappeal

Visit St Wilfrid's Open Gardens this summer



St Wilfrid's Hospice

St Wilfrid's Open Gardens return for 2023 with a full season of events! From lakes to sculptures, exotic fruits to rose gardens, formal beds to wildflower meadows, there really is something for everyone.



1
April 15th Saturday
'Squirrels'
The Street, Arlington
BN26 6RX

8
July 5th Wednesday
St Wilfrid's Hospice Gardens
1 Broadwater Way, Eastbourne
BN22 9PZ
Booking necessary

9
July 12th Wednesday
Waldron Gardens, Rafters
Whitehouse Lane, Waldron TN21 0QY
and **The Old House**
The Street, Waldron TN21 0QX

10
July 15th Saturday / 16th Sunday
Longleys Farmhouse
Harebeating Lane, Hailsham BN27 1ER

2
April 22nd Saturday
Carters Corner Farm
Cowbeech Hill, Cowbeech BN27 4JA



11
July 29th Saturday
Limekiln Farm
Chalvington Rd, Chalvington BN27 3TA

3
April 26th Wednesday
Bates Green
Tye Hill Road, Arlington BN26 6SH

12
August 5th Saturday
Pashley Road Gardens
6 Pashley Road & 8 Pashley Road,
Eastbourne BN20 8DU

4
May 13th Saturday
Cowbeech House
Cowbeech BN27 4JF

13
August 10th Thursday
Lottbridge Golf Club Family Open Day
Lottbridge Drove, Eastbourne BN23 6QJ

5
May 28th Sunday
Sunniva Harte's Garden
Oak Gate, Hankham Street, Hankham
BN24 5BG

14
August 13th Sunday
Oldfield Road Garden
23 Oldfield Road, Lower Willingdon
BN22 9QD

6
June 3rd Saturday
Sherrington Manor
Selmeston BN26 6UB

15
September 2nd Saturday
Knightsbridge House
Grove Hill, Hellingly BN27 4HH

7
June 17th Saturday
Friston Place
Friston BN20 0AH

Garden opening times are 11am-4pm for all the gardens except Bates Green 10am-4pm, St Wilfrid's gardens 10am-3pm and Longleys Farmhouse 11am-5pm both days.



To find out more, request a brochure or to purchase an Open Gardens Annual Pass visit stwhospice.org/opengardens or call Michele on **01323 434224**

Looking for a challenge?

Take part in an event for St Wilfrid's



St Wilfrid's Hospice

Saturday 10th June

Skydive! Calling all thrill seekers!

Come and join our Skydive day on **10th June** and experience the thrill of a 10,000ft parachute jump. There are a limited number of places available, so book now for a summer challenge that will take you to dizzying heights.

You will receive full training, an experienced parachute instructor will be your tandem buddy, and our friendly team will be on hand to support and answer all your challenge or fundraising questions.



For full details and to register visit stwhospice.org/skydive

Friday 1st September



Calling all golfers

Join the St Wilfrid's golf tournament on **Friday 1st September**. It will be a fun-packed, but competitive afternoon at the beautiful Willingdon Golf Club with dinner in the club house to round off the day. It's £60pp and places are limited.

Find out more and book your place at stwhospice.org/golfday

Saturday 9th September



Starlight Stroll is back

Starting from Princes Park, you will walk along the promenade, beside the sea, to the halfway point at the beautiful Italian Gardens. You will receive a special lantern to decorate with a message in support of the hospice or in memory of a loved one and can lay this in the Gardens before strolling back to Princes Park to collect your finisher's medal and have a celebratory drink and bite to eat.

Whether you are walking for fun or to remember a loved one, you can be sure that with every step you take you will be raising vital funds to help provide hospice care for people who need it.

Sign up at stwhospice.org/event/starlight-stroll

Saturday 23rd September

The WilfWalk – perfect for walking fans seeking a challenge

Enjoy breathtaking views as you take on well signposted routes over the South Downs, with support and refreshments along the way. Choose from three routes or tackle all three for a marathon challenge!

Visit stwhospice.org/wilfwalk



- | | | |
|----------------------------------|--------------------|-----|
| ◆ Ditchling Beacon to Southease | 11 miles / 17.6 km | ♂♂ |
| ◆ Southease to Alfriston | 7.5 miles / 11km | ♂ |
| ◆ Alfriston to Eastbourne | 10 miles / 16km | ♂♂ |
| ◆ Ditchling Beacon to Eastbourne | 26 miles / 41 km | ♂♂♂ |

For a full list of St Wilfrid's events including running, cycling and overseas treks visit www.stwhospice.org/events