

FREE

VICTORIA PLACE
POPOP PARK 2023

Soak up the sun whilst
enjoying the atmosphere
of Victoria Place.

THE EASTBOURNE
FEASTIVAL IS BACK!!

The towns number one
family music festival returns
for its 8th year.

08/23

Issue 038
August 2023

Pages 28-29

Page 56

Bournefree



www.bournefreelive.co.uk

Want to know
the 2023 value of
your Eastbourne
area home?

Find out in
60 seconds

Scan here



Crane & Co

since 1982 
Jürgen Matthes
Student Organisation

**WE REQUIRE HOST FAMILIES
AND TEACHERS.** See page 9
matthes.uk/newfamily | matthes.uk/newteacher



NEW
COURSES
STARTING IN
SEPTEMBER



OUR 2023-24 ADULT COURSE
GUIDE IS OUT NOW!
adult.escg.ac.uk

 **Lightning Fibre**
Hyperfast Broadband



Switch Today!

01323 380260
www.LightningFibre.co.uk



**A NEW LOOK.
A NEW BADGE.
A NEW OWNER.
A NEW ERA.**

THIS IS EASTBOURNE BOROUGH

SUCCESS IS DRIVEN BY BELIEF



Sponsored By





PROUDLY
SPONSORED BY



NORWEGIAN
CRUISE LINE

FIRST FIVE HOME GAMES SHOW YOUR SUPPORT



VS
HAMPTON & RICHMOND
SATURDAY 5 AUGUST 2023



VS
BATH CITY
SATURDAY 19 AUGUST 2023



VS
TRURO CITY
SATURDAY 26 AUGUST 2023



VS
WESTON-SUPER-MARE
SATURDAY 2 SEPTEMBER 2023



VS
WELLING UNITED
SATURDAY 23 SEPTEMBER 2023



TICKETS ON SALE NOW!

JOIN US AT
PRIORY LANE, EASTBOURNE, BN23 7QH

WWW.EBFC.CO.UK

For breaking news 24/7, log onto our news website at
www.bournefreelive.co.uk



Peter Lindsey, Editor.

Contacts

Email: andy@bournefreemag.co.uk
 Telephone: 01323 430303

Editor

Peter Lindsey
 Email: pete@bournefreemag.co.uk

Advertising

Email: gail@bournefreemag.co.uk
 Telephone: 01323 430303

Email: harry@bournefreemag.co.uk
 Telephone: 07809 443027

Production

Custard Design, Eastbourne
 Email: artwork@bournefreemag.co.uk
 Telephone: 01323 430303

Images

Cover: Jurgen Matthes
 Food: Shenggeng Lin
 Health: Mor Shani Yu
 Property: Murat Demircan
 The Arts: Caught in Joy

Our next edition will be distributed from September 1st. Make sure you are a part of it.

custard
 DESIGN MARKETING PRINT

ignite
 PR & Engagement

Simon and Gaynor – both looking to improve Eastbourne

IT'S been another busy month here at *Bournefree* – but a very successful and rewarding one too.

By **Peter Lindsey**

I've had time this month to get out and about meeting some key members of our community.

Among the first was Simon Leslie, the new owner of *Eastbourne Borough Football Club*.

It was an absolute privilege to spend time with him and discuss his very big plans for the Borough.

He's made his money in international travel and media – and now he is spending some of that in Eastbourne.

What could be better? And if he takes Eastbourne into the Football League, it would be just amazing.

I wouldn't bet against it...

Eastbourne Seafront

I have also met up with Gaynor Sedgewick. She's Chair of the *Friends of Eastbourne Seafront*.

The group was formed 18 months ago when our beloved Bandstand was closed.

Now, it's on a much bigger mission – to help with the much-needed improvement of our seafront.

We all know – and that includes *Eastbourne Borough Council* – so much more can be done and needs to be done.

She vows: "We are non-political and we will work with anybody. If *Tesco* owned the Bandstand, then we would have taken *Tesco* to task."

New borough council leader Stephen Holt and his deputy Margaret Bannister both realise the need to do more.

And Gaynor did stress that the Friends' relationship with the council is on the up. That's good news.

Airbourne

We're now into August and it's *Airbourne* once again. Let's hope for a busy and successful four days and bumper trade for our businesses.

It's already been a hot summer and let's hope August sees a booming month for our tourism industry.

Have a great month.

Bournefree

Bournefree is becoming more and more popular each month, and we want to make it easier for you to promote your business or organisation.

Gail and Harry are here to help you with your marketing and to raise awareness of what you do.



gail@bournefreemag.co.uk
 01323 430303



harry@bournefreemag.co.uk
 07809 443027

Every care has been taken to ensure that the information in this magazine is correct. Neither the publisher, Bourne Free Publications Limited, nor contributors can take responsibility for loss or damage resulting from errors or omissions. Bourne Free Publications Limited does not endorse the accuracy of the advertisements or the quality of the products/services being advertised.

Information provided by businesses and community organisations are provided directly by their own representatives. Please direct any queries or comments regarding content directly to the organisation.

Copyright © 2023. Bourne Free Publications Limited. All rights reserved. No part of this magazine may be reproduced in part or whole without express permission of the editor.



Making a difference locally

NEWLY refurbished *Old Town Service Station* raises £443 for *You Raise Me Up*.

By **Claire Goddard**

Old Town Service Station has recently completed refitting and rebranding its retail offering, transforming the shop into a modern and contemporary convenience store after relaunching as *Nisa Local*.

Fantastic support

To celebrate the store's relaunch, an open day was held for the local community on the 11th of July. The event was supported by Christina Ewbank, Chief Executive of *Eastbourne Chamber of Commerce* who inaugurated the celebrations by conducting a ribbon-cutting ceremony. Customers visiting the store enjoyed food and drink giveaways including free *Costa Coffee* and *Skwishee* as well as free gifts from *Rollover Hotdogs*, *Monster*, *Cadbury*, *Longman Brewery* and more!

The *Pricewatch* team took the opportunity to fundraise in aid of *You Raise Me Up*; their efforts were a great success raising £443 for the

cause. The money raised will be spent on one-to-one counselling sessions for bereaved families who have suffered the loss of a child aged 16–25.

Debbie Harrington from *YRMU*, said: "We had a lovely day celebrating *Old Town's* relaunch and were lucky to be invited along as their chosen charity. For a donation there was a fun balloon pop with amazing prizes and home-made cakes from our *Community Café*."

It was a great day with free giveaways; customers visiting the garage for fuel were leaving with arms full of freebies and smiles on their faces!



Thank you to *MADL* and *Old Town* for your continued support."

Heart of local community

Old Town continues to be at the heart of their local community; with the help of *Nisa's Making a Difference Locally (MADL)* charity the store has donated an impressive £5,358 to local charities. Beneficiaries include *The JPK Project*, *Wayfinder Woman* and *Children with Cancer Fund* to name a few.

To date the *Pricewatch* group has donated a massive £49,500 into the communities it proudly serves.

Andre Salvidge, Charity Ambassador for *Pricewatch*, commented: "I can't thank *MADL* enough for helping us as independent retailers

to make a difference in our local community. These donations make a real difference to smaller charities and community groups who rely on support from local people and businesses to stay afloat. We're very grateful to our loyal customers for donating and helping to support these great local schemes."

The store proudly stocks a wide range of *Co-op* products. Claire Goddard, Marketing Manager for *Pricewatch* said, "Stocking *Co-op* products has had a positive impact; not only is it a recognised and trusted brand that our customers love, but a percentage of every *Co-op* item purchased goes towards our *MADL* fund, allowing us to support local charities and good causes with monetary donations."

Successful rebrand

Paul Salvidge, Director for *Pricewatch*, added: "I'm delighted with the results of our successful rebrand which has transformed our shop! The inviting new look, combined with great offers and promotions, has been a hit with our customers and we've teamed up with some fantastic brands reinforcing our food-to-go offering with *Costa*, *Rollover Hotdogs*, *Swan bakery* and *Skwishee* – just in time for summer!"

Leaping to support again

EASTBOURNE estate agents *Leaper Stanbrook* is once again sponsoring the club championships at *Meads Lawn Tennis Club*.

By **Peter Lindsey**

More than 120 members have entered in ten different categories plus a consolation mixed doubles event for first round losers.

Managing Director Andrew Leaper said: "Leaper Stanbrook is proud to

sponsor the annual *Meads Tennis Club (ROMPA)* tournament again this year and hopes that the weather remains fair and that the level of tennis is up to the club's usual high standards."

Finals day is on Sunday September 17th and members of the public are very welcome to watch some high-quality tennis matches whilst enjoying some light refreshments.



Club chair Hazel Sneath said: "We are delighted that once again, *Leaper Stanbrook* is sponsoring our annual club championships and so pleased to maintain our links with this prestigious Eastbourne estate agency."

Financial support is particularly welcome this year as the club has ambitious plans to extend its pavilion, which was constructed in the 1980s.

A phased development will see extensions to the kitchen area and improvements to the toilet and changing facilities, ensuring excellent disability access.

Pictured: Committee Member Cassie Philip with Andrew Leaper and members of the *Meads LTC*.

Leading the way in providing an **AFFORDABLE PROFESSIONAL** service



WESTMINSTER LAW

Wills ~ Estate Planning ~ Probate



If you are over 60 it will only cost you **£85*** to make or update your Will.

We are also Lasting Power of Attorney Specialists - only **£95*** each LPA if instructed during the Will appointment.

Our prices include home visits and Inheritance Tax advice.

Call us now for a no obligation chat on: **01323 679411**

www.westminster-law.co.uk email: info@westminster-law.co.uk
Westminster Law Ltd, Reg. Office: Wellesley House, 204 London Road, Waterlooville PO7 7AN

*OUR PRICES INCLUDE VAT. These very special rates are only available if you are over 60 years old. Our normal price for a standard single Will is £135, or £225 for a couple. Minimum spend for a free home visit is £85.

Lightning Fibre launches Full Fibre in Langney



Lightning Fibre's Community Engagement Manager, Nicola Funnell and Cllr Hugh Parker.

AS Lightning Fibre continues its roll out across Eastbourne and beyond, the company has recently completed the Langney area network build, adding a further 6,500 homes and businesses to the network coverage area.

By **Peter Lindsey**

As a local, community-centric business, the company has donated a 1Gbps business connection to the local community centre, as part of a digital inclusivity strategy.

Hyper sponsors

Lightning Fibre, Hyperfast Broadband, will be returning to sponsor and support the whole of the Cosplay Hall and the Cosplay Competition at WynterCon X this October.

The popular event is on October 14th–15th at the *Winter Gardens*, Eastbourne. Tickets are on sale now.

Lightning Fibre was also a category sponsor at the *Child of Sussex 2023* awards.

It was hosted by the *East Sussex School of Circus Arts* in support of

Award's charity partner, Brighton-based *Rockinghorse Children's Charity*.

Register today

To sign up for Lightning Fibre Hyperfast Broadband, you can order online at www.lightningfibre.co.uk or call **01323 380260** (Mon–Sunday 8am–8pm).



Lightning Fibre

EASTBOURNE!

FULL FIBRE BROADBAND

IS HERE

Register Today!



We're a local business, building a brand new hyper fast and hyper reliable broadband network throughout the region providing the whole town with 100% Full Fibre



01323 380 260 | ask@lightningfibre.co.uk | www.LightningFibre.co.uk



New dog-friendly pocket guide



A £15,000 fund has been made available for exciting tourism ideas across Eastbourne.

By **Peter Lindsey**

And £2,461 of that money is being spent on a range of dog-friendly visitor initiatives which will be delivered throughout the rest of this year.

The Friends of Eastbourne Seafront has been awarded the grant from the *VisitEastbourne Tourism Development Fund*.

The funding will be used to research and create a new dog-friendly Eastbourne pocket guide which will appear both online at VisitEastbourne.com and in print.

A new Dog-Friendly Eastbourne award scheme will identify and promote venues that go the extra mile to provide excellent facilities and

'pawsomely' good service for visitors and their pet pooches.

And a photo competition will celebrate many of Eastbourne's canine residents and visitors, while a seafront campaign for responsible dog ownership will promote the use of bio-degradable poo bags and a dog-friendly code of conduct.

The VisitEastbourne Tourism Development Fund is a £15,000 pot to subsidise new initiatives which help to increase footfall and visitor spend in the town, along with opportunities to improve training, provide research, reach new

audiences and support a cultural shift towards carbon-neutral business.

Applications were open exclusively to members of *VisitEastbourne* and funding has been made available by repurposing savings achieved following a gradual shift from traditional to digital marketing methods, as well as increased income generation from VisitEastbourne.com business membership.

Contact dogfriendlyeb@gmail.com

For information on joining VisitEastbourne.com from as little as £99+vat per year, email promotions@eastbourne.gov.uk

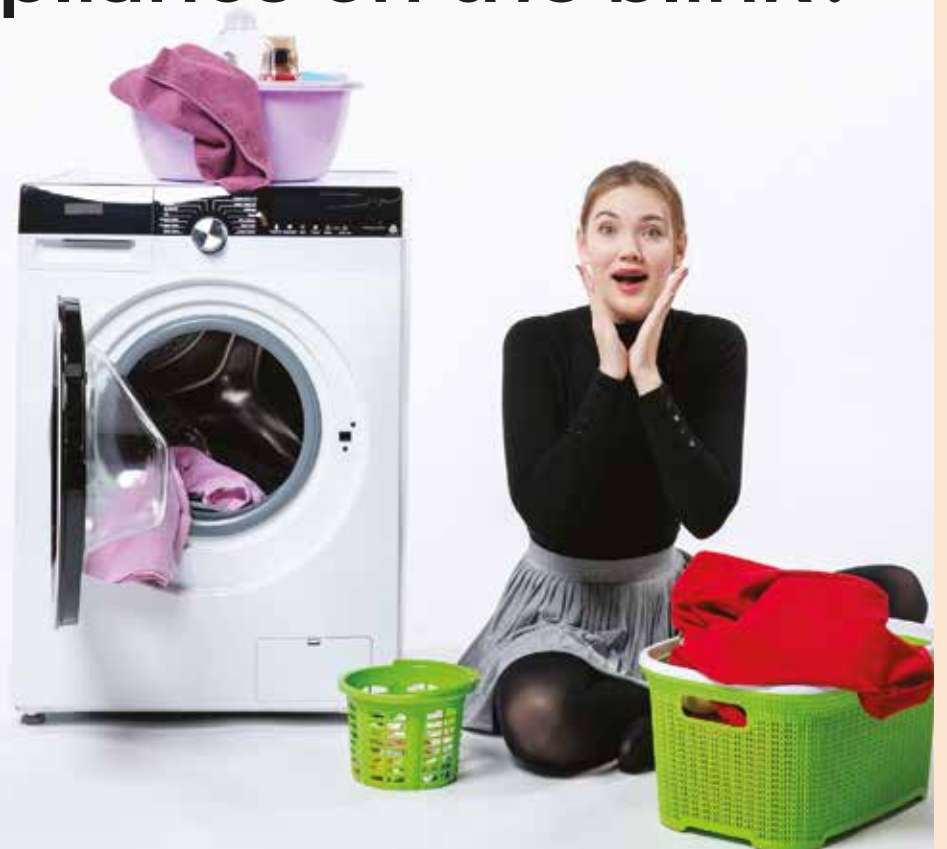
Is your domestic appliance on the blink?

We offer a fast and reliable service by our own engineers, on all your domestic appliances including washing machines, dishwashers, tumble dryers, fridge/freezers and all types of Electric ovens.

We stock parts for all major brands and replacement models where necessary quickly installed and your old equipment recycled.

Call now to see how we can help you on **01323 733279**

 **Davis** 
TV · HiFi · Home Appliances



34A Church Street, Old Town, Eastbourne, East Sussex BN21 1HS 01323 733279 www.davistv.co.uk
Call into our showroom located on the A259 in Old Town, Eastbourne, for a demonstration of the latest technology from all the top brands, with **FREE CAR PARKING OPPOSITE THE SHOP**

Foodbank Family Funday

A DAY of fun, food, and community support.

By **Kim Hatcher-Davies**

Eastbourne Foodbank is thrilled to announce the upcoming "Foodbank Family Funday," a community event aimed at bringing joy, entertainment, and support to our local community.

This exciting event promises a delightful combination of activities and attractions for all ages.

Scheduled to take place on August 5th from 11am to 4pm, the *Foodbank Family Funday* will transform Eastbourne into a hub of vibrant energy and celebration. Attendees can look forward to a variety of engaging activities, including a dog show, classic cars exhibition, funfair rides, a captivating mermaid corner, a thrilling dog



treasure hunt, a bouncy castle, and a wide array of stalls showcasing local artisans and vendors.

Admission to the *Foodbank Family Funday* is free, with donations warmly encouraged to assist the *Foodbank* in its mission to alleviate hunger and provide essential resources to vulnerable individuals and families within our community.

Make sure to mark your calendars for August 5th, and join us at West

Rise Junior School, Chaffinch Road, Langney, Eastbourne BN23 7SL for an unforgettable day of community spirit, entertainment, and support.

Together, we can make a difference!

For more information, please contact: Kim Hatcher-Davies, Morrisons, Eastbourne.

07811 716755
Kim.hatcher-davies@
morrisonsplc.co.uk

New Defibrillator

THE John Jackson Charitable Trust has kindly donated half the cost of replacing the old, rusted Defibrillator Cabinet at the side of the Clock Restaurant in Hyde Gardens.

By **Peter Lindsey**

Pictured are (left to right) Alec Stephens Chair of Fundraising, Margaret Downey Lead Trustee JJCT and Cristin Freeman JJCT Trustee.

Eastbourne Area Community First Responders provides great support for the community with such initiatives.



since 1982 
Jürgen Matthes
 Student Organisation

WE REQUIRE HOST FAMILIES

for German students in all parts of
 Eastbourne, Westham,
 Polegate and Hailsham
 (up to 4 students per family)

We also require **TEACHERS** for our students

**APPLY
 HERE**

HOST FAMILIES: matthes.uk/newfamily/
 TEACHER: matthes.uk/newteacher/
 OR PLEASE RING **EB 744020**

CASH OR AUCTION

in Association with Eastbourne Auctions Your Local Saleroom with the International Reputation

Bring items along for a **FREE Friendly Advice CASH OFFER** or entry into our forthcoming Auction

To book an appointment or use the Royal Mail **FREE** postal service call Rosie on **01323 431444** option 2-1-1



Sold for
£9,100

**Valuations are
FREE in 2023**

Items Wanted

Gold and Silver Jewellery in any condition
Costume Jewellery • Watches working or not
Coins and Medals • Wines & Spirits
Oriental items – even when chipped or damaged
Wines & Spirits • Antiques & Collectables
Records • Any quirky items



Sold for
£3,650



Sold for
£3,600



Sold for
£3,400



Gold chain
Sold for
£2,600



Sold for
£2,500



Sold for
£1,600



Sold for
£1,500



Cigars
Sold for
£1,300



Chinese
Sold for
£1,200



Sponsoring
the weather

Eastbourne Auctions

www.eastbourneauction.com

Auction House, Finmere Road, Eastbourne BN22 8QL



FULL Probate and House Clearance Service in Operation

aMAIZEing!

HERE is your chance to win family tickets to *Sharnfold Farm's* spectacular six-week 'Be Amaized This Summer' event.

By **Peter Lindsey**

Sharnfold Farm – part of The Family Parks Group – is busily preparing for the fun which runs from July 22nd until September 3rd.

The farm is situated at Stone Cross and is already enjoying a bumper summer.

Here are some of the highlights of 'Be Amaized This Summer:'

- Meet the farm animals and small friends.

- Play in the adventure play area and sand pit.
- Go on a bug hunt in the rewilding garden.
- Adventure through the woodland trail.
- Challenge each other to a game of mini golf.
- Discover in the sound garden.
- Get creative in the mud kitchen.
- And, see if you can navigate the maize maze here for summer only!



There are also three special days:

- Bluey and Bingo from the much-loved kids TV show 'Bluey' are also coming to Sharnfold Farm on Tuesday August 1st.
- Peppa and George are appearing on August 16th to please all *Peppa Pig* fans.
- Chase and Marshall are on the Farm on August 30th for all *Paw Patrol* fans.

Enter to win

To win, simply answer this question: **Where is Sharnfold Farm?**

Email your answer to:

pete@bournefreemag.co.uk with your name.

Entry to the Farm is only £6.45 per person and you are urged to pre-book your tickets today at:

www.sharnfoldfarm.co.uk



Helping to keep the lid on energy costs!

With soaring energy bills why not replace your existing polycarbonate or glass conservatory roof with a **new tiled and insulated roof** and save money on keeping your conservatory cosy this winter.

Call now for a free, no obligation quote on **01323 844944**

solid conservatory roofs Ltd
33 South Street, Eastbourne, East Sussex BN21 4UP
www.solidconroofs.co.uk info@solidconroofs.co.uk
Telephone: 01323 844944

www.solidconroofs.co.uk **01323 844944**



INTERNATIONAL
LANGUAGE
CAMPUSES

Open your home to the world

Host students from over 50 countries with EF. Lovely hosts are needed to share their culture with our students who are coming to Eastbourne. We are looking for hosts that are available now or in summer 2023.

EF Eastbourne
01323 819050
accommodation.eastbourne@ef.com



Sign up today at
ef.co.uk/hostfamily

Call us now to get
more information.
01323 819050



Ice and soul of the party!

Festival Events announces new plans for Lightning Fibre's Ice Rink.

By **Harry Farmer**

Festival Events have revealed further plans for the return of Lightning Fibre's Ice Rink running from Saturday 9th to Sunday 31st December 2023, to be located outside The Enterprise Shopping Centre and Eastbourne Train Station.

This year you will see some very exciting changes, *Lightning Fibre's Ice Rink* will be situated under a massive inflatable cube structure, along with a second inflatable cube including the famous Topsy Toadstool bar and many pop up street food traders for you to try! This year you will be able to pop into our Ice Cube Bar for a drink, watch live bands, dance to our DJs and book your office Christmas parties here too! The Ice Cube Bar can be hired – for more details and to register your interest please contact the *Festival* team at info@festival.events now.

Dates for your diary

Tickets will be on sale soon for our opening launch night on Saturday 9th December and our ticketed New Yews Eve party on Sunday 31st December – Check out www.visiteastbournetickets.co.uk for more details.

Ice Skating sessions will run daily from Saturday 9th to Sunday 31st December 2023, 10am to 10pm, tickets now on sale at www.visiteastbourneticket.co.uk Book now for your family skating session, group bookings and your companies parties. To hire *Lightning Fibre's Ice Rink* for a private event please contact info@festival.events

"We're thrilled to take on the management of *Lightning Fibre's Ice Rink* and have plenty of new exciting ideas for this event" said Dave Richardson, one of the Directors of *Festival Events*. "We look forward to collaborating with new and existing partners to develop and deliver this outdoor event successfully.

"*Festival Events* is committed to maintaining *Lightning Fibre's Ice Rinks* popularity while introducing new and exciting experiences too. The team is already hard at work, putting together plans to make this year's event even more magical than ever before."

To buy tickets please visit www.visiteastbourneticket.co.uk

For more information please visit www.festival.events



FEASTIVAL EVENTS PRESENTS

THE Ice Cube BAR

2023 Party

NEW YEARS EVE
SUNDAY DECEMBER 31ST

FAT FREDDIE AND THE QUEENS **the Pat Butchers**

LIVE MUSIC + DJ 

TICKETS ON SALE SOON

THE ICE CUBE BAR - NEXT TO LIGHTNING FIBRE ICE RINK
ENTERPRISE CAR PARK - EASTBOURNE



Lightning Fibre's

ICE RINK



First aid courses to help our pets

AN Eastbourne company has launched a new range of first-aid courses to help our four-legged friends.

By **Peter Lindsey**

The courses by Lily Dean Training are designed to give pet owners or people who work in the industry the essential skills they would need to provide first aid for a pet in an emergency situation.

Owner Theo Parfitt said "We already offer a comprehensive range of first-aid and health &

safety qualifications, however we are really pleased to bring this unique opportunity to give care to the four-legged family members that we love.

"Our classroom courses offer an inclusive environment for everybody to learn, and we very much look forward to delivering this training

to the people of Eastbourne and surrounding communities."

Go to: www.lilydeantraining.co.uk/booking

Email: info@lilydeantraining.co.uk

or contact Theo on **07901 656496**

Facebook / LinkedIn:
Lily Dean Training



Are you looking for a reliable and trusty air conditioning or ventilation company?

- Specialists in installation, service and repair • Family run business with over 40 Years' experience
- Free survey and design with no obligation quotation • Professional & honest advice
- All leading brands with extended warranties



Contact us now
for more information
on **01323 354444**
sales@bourneair.co.uk • www.bourneair.co.uk

BOURNE 
Air Conditioning Ltd

Skittles tournament set for repeat

FORTY-FOUR teams took part in the first ever Eastbourne skittles tournament organized by the Rotary Club of Eastbourne.

By **Geoff Fitch**

The event – at The Saffrons Sports Ground – was a huge success and will be repeated next year with more lanes and more teams.

It was planned to run over five July evenings as five separate competitions but unfortunately the

weather played a part and the Tuesday was rained off.

All but two of the teams playing on that night were able to relocate so were still able to join the fun.

With seven lanes, organisers were able to accommodate 14 teams per night.

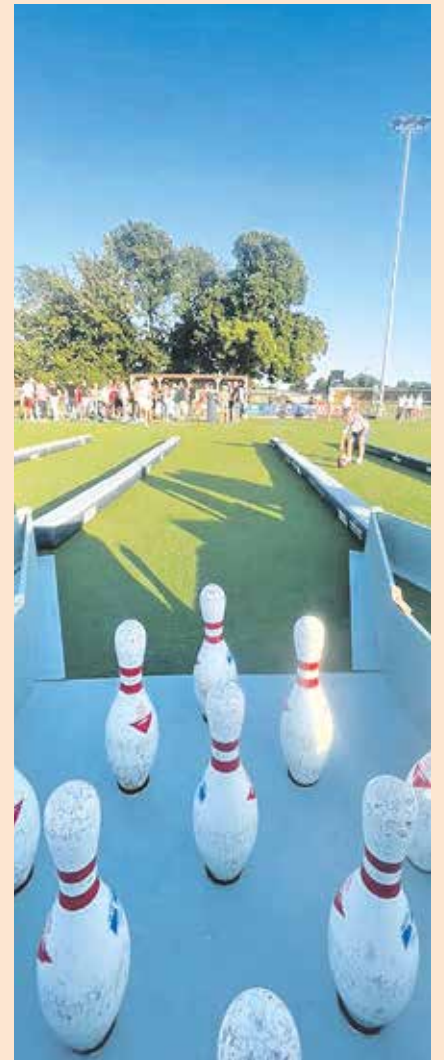
Monday kicked off with only eight and on Wednesday there were

12 teams, including five from Eastbourne Motoring Centre (EMC).

One of them won the night with the incredible score of 307 which turned out to be the best of the week and therefore taking the overall prize.

There were 13 teams on Thursday while Friday saw two teams from Eastbourne AM Rotary Club compete against two teams from Langport Masonic Lodge, My Candyland, a new business in Grove Road, and The Lansdowne Hotel who were winners on the night.

In all, the 44 teams knocked down 8,633 pins over the course of the week.



We are a real treasure trove for everyday essentials and for those unusual pieces you just can't seem to find anywhere else.



**Independant Plumbers Merchant
Commercial & Domestic**



Pegler Yorkshire



01323 847125

sales@sussexpipes.co.uk www.sussexpipes.co.uk

Unit 63, Station Road Industrial Estate, Hailsham BN21 2ET



Eastbourne Carbon Neutral 2030

Are **you** ready?

To reach our net zero target by 2030 we need to dramatically increase the use of renewable and low carbon energy sources to reduce our reliance on carbon-emitting coal, oil, and natural gas.

With today's high energy prices, there's never been a better time to install a renewable energy system.

Large Scale Commercial Solar PV | Domestic Solar PV | Solar Thermal | Battery Storage
| Air Source Heat Pumps | EV Charging Points

Scan the QR code to learn more and get in touch with our expert team.



The South Coast's most experienced renewable energy installers

Tel: 01323 739474

www.ohmenergy.co.uk

info@ohmenergy.co.uk



OHM Energy triumphs at regional Energy Efficiency awards

SUSSEX-BASED renewable energy company, **OHM Energy** won the **Renewable Heat Installer of the Year** award and was also **Commended** for its solar work.

By **Peter Lindsey**

Over the last 12 months, OHM Energy has installed 41 heat pumps, 115 solar PV arrays and is enjoying 150% year-on-year growth.

OHM Energy works with a number of strategic partners to deliver a blend of funding, government grants, and finance options which, subject to qualifying criteria, can often result in a project being 100% funded. Local businesses they have helped this past year include *Rossetts Mercedes, Gun Brewery, GT Factors, Jarvis Manufacturing, Wave Sport*, and the *Westgate Leisure Centre*.

There were 11 categories at the event at *Sofitel Gatwick Airport Hotel* on July 14th, attended by individuals and companies throughout the South East

area that are involved in the energy efficiency industry.

Energy Efficiency Awards chairman Gary Braybrooke said: “Companies and individuals working in the energy efficiency industry are carrying out some of the most vital work in the UK today. We all know we have to be more energy efficient as a nation, but it is our nominees and winners who are at the sharp end, creating often ingenious opportunities to help people save energy, drive down bills and help the environment.”

Jason Lindfield, Founder and Managing Director of OHM says: “The *Energy Efficiency Awards* celebrate the efforts of everyone in the sector. It’s been an exciting year for OHM with a record number of installations and the

launch of our new training hub. We’re delighted to win the regional title and are looking forward to the national awards in September.”

Further information on the awards is available at energyefficiencyawards.co.uk



01323 739474
info@ohmenergy.co.uk
www.ohmenergy.co.uk

www.linkedin.com/company/ohmenergy

@ohmenergy #ohmenergy #ohmenergyuk

TrustMark, MCS, Gas Safe, and RECC accredited.



Eastbourne Food Partnership publishes Value of Veg report

Eastbourne Food Partnership, who recently joined the Chamber of Commerce, has published the Value Of Veg report, as part of their campaign to increase the amount of veg that is grown and consumed in Eastbourne.

The report, which has now been presented to local MP Caroline Ansell, identifies the benefits to wellbeing and community of growing, cooking and eating more veg. The Value Of Veg also makes recommendations for actions that range from local-level to national government. Eastbourne Food Partnership Coordinator, Nancy Wilson explains:

“We were delighted to have the



opportunity to share the ways our community partners work together around a common goal of good food for all in Eastbourne, to

harness and share the power of veg. For example, it has been brilliant to see the relationships between community gardens and community

fridges and kitchens develop across the town, making ultra-local fresh produce accessible and affordable”.

Eastbourne Food Partnership has also launched a Zine to keep people updated about their initiatives, which includes a Good Food Charter, where local businesses can commit to healthier and more sustainable food practises in the workplace and within their local community.

If you would like to get involved with the Eastbourne Food Partnership, or learn more about the Value Of Veg, visit their website at eastbournefoodpartnership.org.uk

Nelson Coffee Roasters: Passion Meets Quality in Eastbourne

Nelson Coffee Roasters isn't just a café – in the words of its founders, Ben and Lucy, Nelson is a love letter to coffee. Their journey, which ignited during a honeymoon trip to the town of Nelson, British Columbia, led to the creation of one of the most respected coffee businesses in Eastbourne.

In 2014, Ben and Lucy launched a thriving café, Nelson Coffee, located in the heart of Eastbourne, the café quickly became a hub for both brunch enthusiasts and coffee lovers. More than a place to grab a great bite to eat, it's here that you can taste the fruits of their labour - the house-roasted speciality coffee.

What sets Nelson Coffee apart is their on-site roastery, launched in 2020. The roastery embodies their relentless pursuit for the perfect

cup. Nelson are sticklers for quality, handpicking only coffee beans that score 85 or above on a 100-point quality scale. The result? A lineup of eight single-origin coffees, each with its own unique flavour profile, but always juicy, clean and full of flavour, from origins such as Kenya to Brazil. Coffee lovers can enjoy these beans in-store or can take the experience home by purchasing via their website, nelsoncoffee.co.uk

Nelson Coffee Roasters caters to everyone from coffee-loving individuals to businesses. Whether you're looking to add specialty coffee to your restaurant or café, seeking a high-quality office coffee supply, or just searching for the perfect brew for home, Ben and Lucy are ready to guide you. And, if you're aiming to launch a café or need advice managing a hospitality



Ben and Lucy of Nelson Coffee Roasters

business, they're ready to share their extensive industry knowledge.

Ready to dive into the world of specialty coffee with Nelson Coffee Roasters? Reach out to Ben at ben@nelsoncoffee.co.uk

or call directly on 07710 989340. With Nelson Coffee Roasters, you're not just buying coffee - you're becoming a part of a passionate coffee community.

New members for July

RTJ of Sussex Property Services • FM Staffing Solutions • Pricewatch • Brighton and Hove Bus and Coach Company • Dawmose Furniture • BM Electrical Maintenance and Installations • SLP Accountants • Sussex Healthcare Solutions • Lumens Electrical • Rotary Club of Sovereign Harbour • Urban Industries

Maybugs wins Small Business Britain Award



Maybugs co-owners Greg Rose and John Dale

The independent Sussex retailer wins 'Highstreet Hero' at the national awards.

Maybugs, which has stores in Eastbourne, Bexhill and Hailsham beat a shortlist of seven competitors from across the country, winning the award in recognition of their work to drive footfall to their business and neighbouring businesses.

On winning the award, co-founder Greg Rose said *"We are just gobsmacked to have won the High Street Hero award. To be recognised as the best independent high street business in the UK for all the community work we do is amazing."*

Adel Hyder, Business Banking Director at TSB, who sponsored the award, said, *"It's well known how much small businesses contribute to their local communities, but generally*

they're not recognised formally for this. This is a fantastic opportunity to put smaller businesses like Maybugs, who have an outsized impact and power our local economies, in the spotlight".

Maybugs' success as an independent High Street retailer is matched by their commitment to supporting the local community. They sponsor a number of local charities and donate hundreds of goody bags each year to local schools, charities and other fundraisers.

Maybugs stocks a wide range of gifts and homewares as well as artisan goods and can be found in Eastbourne on Terminus Road, Devonshire Road, Bexhill-on-Sea, and Vicarage Field Centre in Hailsham.

Cadence opens at Helen Garden

Community Hub takes on new venue at gateway to the South Downs.

Cadence has launched a new clubhouse at Eastbourne's Helen Garden. Taking over the charming thatched pavilion, Cadence is serving hot and cold drinks, snacks and ice creams, as well as continuing to provide the 18-hole putting course, pétanque (boules) and bowls activities.

Having been previously managed by the Council, Cadence's arrival at Helen Garden is the latest step in their mission to build bigger, stronger and more diverse cycling and outdoor-

loving communities and to promote sustainable, responsible enjoyment of the Great Outdoors.

Cadence is open daily 9-5pm at the Pavilion in The Helen Garden.



Join today and reap the rewards!

Eastbourne unLtd Chamber of Commerce is the largest town based Chamber in the South East, so becoming a member will connect you to a large business network offering support, advice and opportunities for you and your business to grow.

Our members not only benefit from the varied events programme we offer but membership also enables them to submit an editorial for inclusion in this publication. This offer is free exclusively for our Members.

Annual membership starts from as little as £59+vat per year – Join today, it's a complete no brainer!

EIA flying high

IT'S August and that can only mean one thing in Eastbourne – *Airbourne* is back.

By **Peter Lindsey**

***Airbourne: Eastbourne International Airshow* has revealed its flying line-up with around 45 aerial displays expected across the free four-day show from 17th – 20th August.**

The *RAF Red Arrows* are performing every day, and there will be displays from the powerful *Typhoon*, *Battle of Britain Memorial Flight* and *Tutor*.

Airshow fans can also look forward to the heavy-duty *Chinook*, the

Norwegian *Vampire* jet fighter and the *Strikemaster* jet.

Incredible displays

The world's only professional wingwalking team will be making a popular return, along with *The Tigers Army Parachute Display Team*, who will be dropping in each day.

One of Europe's leading civilian display teams – *Team Raven* – will be painting shapes in the sky every day, including their trademark *Twizzle*, *Cyclone* and *Heart* manoeuvres.

This year warbird fans will be able to enjoy a stunning joint display from the



Team Raven.

Typhoon and the *Lancaster*, as they make their Eastbourne debut as a duo. The *Rolls-Royce Heritage Flight* will also provide a memorable duo display from the *Spitfire* and *Mustang*.

Hover like a Harrier

Rich Goodwin will be bringing high energy gyroscopic aerobatics in his newly upgraded biplane over the weekend. Built from scratch over four years from a garden shed, the *Jet Pitts* now boasts added jet turbines and Rich will be demonstrating his ability to hover like a *Harrier*. The *Firefly* completes the line-up with displays every day.

Flying starts each day from lunchtime.

Fantastic support

Airbourne is supported by the *Birchwood Group*, *Brufords*, *Caffyns*, *Eastbourne Hospitality Association*, *Environment First*, *Euro Self Drive*, *Frontier Fireworks*, *Gemini Print*, *The Lansdowne Hotel*, *GM Monk Renewables*, *More Radio*, *Neighbourhood First*, *OHM Energy*, *Signtek*, *Stagecoach* and the *West Rocks Hotel*.

Visitors are urged to use public transport where possible when visiting the show, and a cycle park is provided in *Howard Square*.

Get your Garage into Shape!

Upgrade your garage this summer into a space to be proud of.



PRICES START AT £895
(OPENINGS UP TO 2.4M/55MM WHITE SLATS)

We've been trusted by 100,000 customers to transform their home. It's no wonder we're the most recommended on *Trust Pilot* and *Check-a-Trade*, so you can rely on us when we say we are the UK's number one! Our straightforward approach is backed by our trusted local engineers who are on-hand to guide you through the whole process.

From our door, to yours.

- SPACE-SAVING – MAXIMISE GARAGE HEADROOM
- SECURITY-ENABLED AUTO-LOCKING SYSTEM
- CHOICE OF 21 COLOURS TO MATCH YOUR HOME
- REMOVAL AND RECYCLING OF YOUR OLD DOOR
- DEDICATED GAROLLA AFTER-CARE TEAM



GAROLLA
ELECTRIC GARAGE DOORS
GAROLLA.CO.UK

T: 01323 800 116
Lines are open 7 days a week

BESPOKE ELECTRIC DOORS
MANUFACTURED IN THE UK



ECK
Bookkeeping and Accounts Ltd.

Finding yourself buried under a pile of paperwork?

We can help you to free up your invaluable time to work on your business whilst we handle the finances.

We specialise in providing a full bookkeeping service to Sole traders, small and medium sized businesses with a personal touch, swapping dull, repetitive meetings for individualised and informal discussions

We can also provide payroll services including Auto enrolment and Self assessment Tax returns.

We can also file your CIS returns



www.eckbookkeeping.co.uk

admin@eckbookkeeping.co.uk

01323 348 480

aat AAT Licensed Accountant

QuickBooks

XEROX

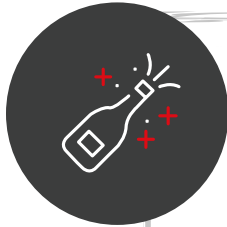
Microsoft

Intuit

Elizabeth Kelly is licensed and regulated by AAT under license number 2006922.

SCHMIDT

KITCHENS | LIVING | BEDROOMS and MORE

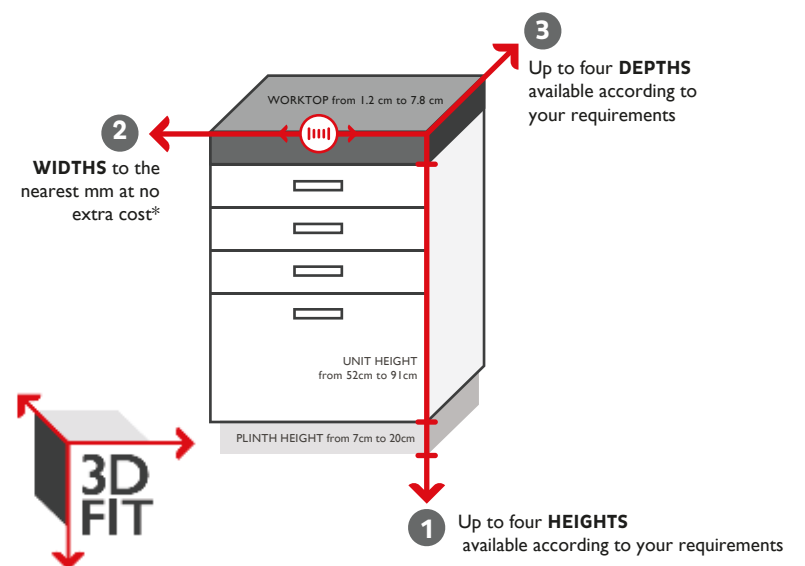


ONE YEAR ANNIVERSARY OFFER
+ 15% extra OFF YOUR NEXT KITCHEN



3D FIT - ONLY AT SCHMIDT bespoke widths , heights and depths

With 3D FIT, you can make the best use of the available space and produce a flawless finish where every millimetre counts. Schmidt can adapt the three different dimensions of your units to gain more storage space that any other brand.



**SCHMIDT
EASTBOURNE**

39 Grove Road, Eastbourne
East Sussex, BN21 4TX
Tel: 01323 408333

> www.homedesign.schmidt

key.

NEW KEY COLLECTION

This collection was created to offer all Schmidt's essentials with affordable prices, while featuring the Schmidt quality.



**FREE BOSCH
OVEN WORTH
OF £450**



From £7,000

**Book your FREE
consultation today!**

SCHMIDT EASTBOURNE

39 Grove Road, Eastbourne
East Sussex, BN21 4TX
Tel: 01323 408333

> www.homedesign.schmidt

SCAN ME





Simon Leslie.



“Who knows – we may see a brass band playing at half time?”

“I’m here for a good time and a long time.”

“Development of our stadium is very significant as well as investment in players and coaches.”

“We are creating individual brands for each player and I am so excited at the prospect.”

“I’m active, buzzing and I’ve got both the time and energy.”

A man on a real mission...

SIMON Leslie is a man on a mission – to get Eastbourne Borough FC into the Football League.

By **Peter Lindsey**

And I wouldn’t bet against it.

Yes, he has the money – an initial investment of £1.5 million – with the promise of much more to come.

He also has the passion: “I am a football fan who has seen a new opportunity.”

“I want to secure Football League status for Borough, and as quickly as we can.”

Simon is a successful businessman, having made his money in media and travel.

But now, it’s something completely different – football.

He said: “I looked at a number of different clubs to invest in but I love being by the sea.”

“This is a lovely part of the world and I feel it’s been under-served. Until now, that is.”

His immediate priorities are to improve the infrastructure and to build a strong team easy for people to watch.

Sporting village

He has a vision for a sporting village at Priory Lane to include other sports as well.

“The team is the fittest people will have seen for a very long time at Priory Lane – young, energetic and exciting to watch.”

“We don’t have the biggest budget in our league but we have young and quality talent combined with strong depth of leadership.”

There’s a new club shop, a new coffee shop open weekdays, and Simon wants the community to come together.

Community events

“We will be putting on events for the community. We have a lot of land here, grass facilities, and I would like to see music festivals and picnic in the park events, something like that.”

“I want to do more and let’s be clear – the more we can invest the quicker we can improve the facilities.”

Simon is urging spectators to book their tickets in advance – he wants to avoid large queues on matchdays.

Fun and games

“I want the experience to be like a theatre of games. I want the experience of coming to a Borough home game to be fun.”

Join a great journey

“We are going on a great journey – and I want the people of Eastbourne to come on that journey.”

“

I am on a mission to build World Class football teams in Eastbourne.



Simon with Jay Leno.





The Chaseley Trust

Your specialist local charity enabling people with complex disabilities to live a full and active life



Located in South Cliff, Eastbourne, The Chaseley Trust is a 55 bed charity care home offering high-quality care, nursing and rehabilitation services for adults with complex neurological disabilities and conditions such as Acquired Brain Injury, Spinal Cord Injury, Stroke, Multiple Sclerosis, Motor Neurone, Parkinson's Disease and Cerebral Palsy.

We offer residents:

- 24 hour residential care and nursing for long term and respite stays
- Specialist rehabilitation services – neuro physiotherapy & occupational therapy
- Fully wheelchair accessible gym facilities also open to the local community
- Dedicated and highly trained staff
- A varied range of stimulating activities
- Healthy and nutritious meals tailored to personal diets
- A home from home in a stunning seaside location
- Casbar, our bistro cafe open to family and guests to socialise during the day

We offer staff:

- Comprehensive in-house training
- Apprenticeships and the opportunity for additional qualifications
- Competitive rates of pay
- Rewarding work
- Career development
- Rolling Rota
- Benefits include free health scheme and life insurance cover

We offer the community:

- Volunteering opportunities
- Fundraising events and opportunities
- A very worthy local cause to support

For further information or to visit, please contact us on **01323 744200** or by email: reception@chaseleytrust.org www.chaseley.org.uk





Chaseley's Summer Sizzler

THE Chaseley Trust – situated at South Cliff, Eastbourne, staged its successful Summer Sizzler.

By **Peter Lindsey**

Residents and staff enjoyed the day on July 19th.

CEO Emma Rich-Spice said: "We all had fun playing summer games in our fabulous garden after a delicious BBQ lunch.

"The afternoon was the greatest fun with staff and residents taking part in whacky races.

"Friends at the *Hydro* waved as staff and resident were heard cheering each other on in dressing up, egg and spoon and wheelchair races."

Fundraising efforts throughout the year make these events possible from the ideas residents put together with the wellbeing team.

The main source of Chaseley's funding comes from residents' fees, which cover the cost of their care package and contributes to the daily running costs of the home.

Various commissioning bodies fund the majority of resident care packages

and they have just 5% surplus to fund all their additional costs, including the upkeep of their beautiful building, upgrading their equipment, and to provide the extra social and recreational activities and services that enhance the comfort and well-being of their residents, which is why they rely on donations and fundraising.

Chaseley is an independent charity-owned care home located in a stunning location on Eastbourne's seafront.

It is a 55-bed home that specialises in long-term nursing and respite care for people with complex disabilities, such as Acquired and Traumatic Brain Injury, stroke, spinal cord injury and degenerative neurological conditions such as Multiple Sclerosis, Motor Neurone and Parkinson's disease.

If you feel that you could support *Chaseley* by making them your Charity of the Year or potentially host an event on their behalf, please contact them on **01323 744200** or **fundraising@chaseleytrust.org**



St Wilfrid's Starlight Stroll

A walk to remember

Light up Eastbourne Seafront, walk five miles beside the sea, and help raise vital funds for your local hospice

- ★ Start at Princes Park, stroll along Eastbourne Seafront and make your way to the beautiful Italian Gardens
- ★ Lay your lantern in the gardens and take a moment of reflection, before walking back to Princes Park to receive your finisher's medal
- ★ Early bird entry just £14 until 2nd July, £18 after
- ★ Receive a special lantern to decorate in memory of your loved one
- ★ Be a fundraising superstar as you raise vital donations for the hospice

★ **10% OFF** ★
your registration fee. Use code BF10 at the checkout

Saturday 9th September Registration from 5pm, walk starts at 6pm

FR Registered with FUNDRAISING REGULATOR
Registered Charity Number: 283686

CLARKE ROOFING SOUTHERN LTD
This event is kindly sponsored by Clarke Roofing Southern Ltd

To find out more about this event and to register, visit us at stwhospice.org/starlightstroll2023 or call **01323 434241**



Wilf Week

26th October - 1st November

Spread a little happiness

It's moments of happiness that make hospice care special. But we need your help to keep making them happen.

This Wilf Week, could you fundraise, take on a challenge, donate or volunteer to help more people in our local area to live well at the end of life?



www.stwhospice.org/wilf-week

01323 434241

[f stwilfridshospice](https://www.facebook.com/stwilfridshospice) [t @stwilfridstweet](https://twitter.com/stwilfridstweet)

Registered with FUNDRAISING REGULATOR
FR [i @stwhospice](https://www.instagram.com/stwhospice)

Schools and businesses working together



Dave Cooper MBE, Faiza Shafeek, EBP Chair and Josh Babarinde OBE pictured with the winning team from The Haven School.

EASTBOURNE Education Business Partnership has been doing some great work with our schools this year.

By **Peter Lindsey**

In the latest project, teams of Year 2 pupils from six primary schools took part in The 'Zip Wire' Challenge.'

It is part of its *Engineering Club* programme.

The challenge took as its theme the safe transportation of a valuable and delicate cargo – an egg.

It was inspired by zip-wire systems using baskets and cable cars to move goods and people across difficult terrain, including the *Emirates Air Line* cable car across the river Thames.

Teams were judged on how fast their basket had travelled (with an unbroken egg), the overall design and build quality of the basket assembly and base station and finally their teamwork.

The Haven CE Primary School was overall winner and received the *Junior Engineers Challenge* trophy and individual prizes.

There were also prizes for the runners-up and a special certificate for everyone.

Looking ahead, *Eastbourne EBP* is planning their *Junior Enterprise Challenge* for 2nd October and the annual highlight, *Eastbourne Youth Radio* on 15th–17th November – now seeking schools and sponsors.

The BIG Futures Show, the annual employability and skills event, is scheduled for 23rd April 2024 and is open for both school and exhibitor bookings.

BIRCH MEWS - THE ONE STOP VEHICLE SHOP

Everything the car and van owner needs, all in one square.

All vehicles serviced and repaired

Get ready for Summer
FREE aircon check with every service
Offer ends 31st August 2023

BIRCH MEWS AUTOS
MOT • REPAIR • SERVICE
01323 412993

MOT • Servicing • Repairs
Brakes • Clutches • Exhausts
Diagnostics • Air conditioning
Steering • Suspension • Welding
Bodywork (arranged)

Looking after your car and your pocket!

MOT CLASS 4
01323 412993
Unit 18
Birch Industrial Estate
A member of GoodGarageScheme.co.uk

DENT DEVILS 15 Birch Estate, Eastbourne
East Sussex BN23 6PH
01323 639244
07764 344795

SPECIAL OFFER 20% off rrp for dent repairs
to remove dents from the love of your life
on production of this advert

FROM THIS TO THIS

www.dentdevils-eastsussex.co.uk

DCT-PERFORMANCE
ROLLING ROAD

TUNING
ECU REMAPPING & REPAIRS
EGR & DPF SOLUTIONS
KEY PROGRAMMING
ELECTRICAL & MECHANICAL
FAULT FINDING & REPAIRS

01323 735 949

Unit 10-11, Birch Industrial Estate
Birch Road, Eastbourne BN23 6PH.

info@dct-performance.co.uk
www.dct-performance.co.uk

Come and find us at:
Birch Industrial Estate, Birch Road, Eastbourne BN23 6PH



Victoria Place

THE GATEWAY TO THE SEAFRONT

Pop Up Park 2023 22nd July – 3rd September

From the 22nd July to the 3rd September 2023, Victoria Place, Eastbourne's gateway to the seafront, will be hosting the Victoria Place summer pop-up park!

Spend some time soaking up the sun whilst enjoying the atmosphere of Victoria Place. Grab a drink or a bite to eat and listen to the live music whilst the world goes by. **Open every day and night** – with plenty of places to eat, shop and enjoy!

Visit Victoria Place, the seafront end of Terminus Road!





THE GATEWAY TO THE SEAFRONT

Events Schedule

July

Saturday 22nd July

2–5pm: Andy Gibbens – Dance in the Street

Sunday 23rd July

2–4pm: Yuri Bentancourt Trio

Wednesday 26th July

Open Mic

Friday 28th July

6–8pm: Carys & The Lads

Saturday 29th July

2–3.30pm: Abba Tribute

4–6pm: Court Brothers

6–8pm: John R Lane
(Country/Neil Diamond)

Sunday 30th July

2–7pm: Stuart Trelvelion

August

Wednesday 2nd August

4–6pm: The Watson Brothers

Friday 4th August

6–8pm: Tom Fitzpatrick

Saturday 5th August

4–8pm: The Medicine Cabinet

Sunday 6th August

2–4pm: Winnie Chris & Band

Wednesday 9th August

6–8pm: Andy T King

Friday 11th August

6–8pm: 2B 40 – UB40 tribute

Saturday 12th August

2–4pm: Helen Ward Jackson – Diva Set

Sunday 13th August

2–4pm: Carys & The Lads

Wednesday 16th August

4–6pm: Watson Brothers

Tuesday 22nd August

Taste of Victoria Place

3–5pm: DJ – Multicultural music

6–8pm: Andy T King

Friday 25th August

6–8pm: Tom Fitzpatrick

Saturday 26th August

3–5pm: Jade Powers

6–8pm: Court Brothers

Sunday 27th August

3–6pm: Willowisp Band

Wednesday 30th August

Open Mic

September

Friday 1st September

4–6pm: The Street Lights

6–8pm: Peter and Pri

Saturday 2nd September

2–5pm: Andy Gibbens – Dance in the Street

Sunday 3rd September

2–3.30pm: Abba Tribute

4–6pm: Sound of The Crowd

*Entertainment subject to change. Please check our social media for full details.

We all want an improved Eastbourne seafront

IT started some 18 months ago when *Eastbourne Bandstand* was closed and showed little sign of reopening.

By **Peter Lindsey**

A group of individuals – concerned about the state of Eastbourne seafront – started talking and meeting.

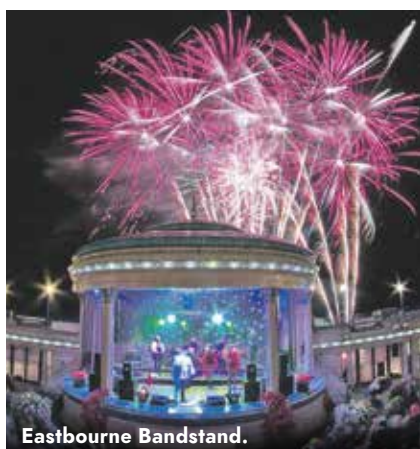
One year ago, they formed the *Friends of Eastbourne Seafront*, a not-for-profit voluntary organisation.

Better place for everyone

Their mission remains the same – to work with the Council and make the seafront a better place for everyone.

Here's Chairperson Gaynor Sedgewick: "We were all very upset when the *Bandstand* was closed for one year, and that's how we got together.

"We have done an incredible amount of work, and there is so much that can be done.



Eastbourne Bandstand.

"We are non-political and we will work with anybody.

"Our relationship with *Eastbourne Borough Council* is improving, which is a positive.

"We talk to many residents and businesses, and people are still very upset about parts of our seafront.

"We need more action."

The Friends has worked with the council to open a cycle track in July on the tarmac between the skate park and the *Sovereign Park*.

Fort Fun site

But the derelict *Fort Fun* site nearby saddens many people, and Gaynor is horrified.



The Redoubt.



Gaynor Sedgewick.

"The council has given a five-year lease to Wingrove House and the brilliant charity *Defiant Sports*.

"However, it's still derelict. It needs a larger operator and it should have been advertised nationally.

"There is a real need there to have something for the children. What we have is very sad and unacceptable."

Marvellous venue again

Next, we come to the *Redoubt* – again closed.

It shouldn't be, says Gaynor, and the Friends has offered to take over its running in early 2024.

She said: "It needs to be open to the public. It can be a marvellous venue again."

And what of the *Bandstand*, now reopen and very popular?

Gaynor said: "The first phase has been completed and well-done *Eastbourne Borough Council*, it has done a good job.

"Further investment is needed and we are now asking for a work schedule for both the *Bandstand* and the *Redoubt*.

"The council cannot rest on its laurels now that phase one of the *Bandstand* is done."

The Friends are also busy gardening along the seafront, and they are talking to council representatives 'every few days.'

Gaynor said: "*Neighbourhood First* have been brilliant, very helpful, and we are grateful to support from the council with our published Guide and also our Welcome Team.

"We want to do more, a whole lot more, and we are confident that we will."

To make contact with the Friends, go to: friendsofseafont.org.uk

You can email: gaynor@friendsofseafont.org.uk



Summer of fun at Sharnfold Farm

22 JULY - 03 SEPT 2023

Join us on our farm trail for a jam packed day full of fun for the whole family. Meet our farm animals and small friends. Play in the adventure play area and sand pit. Go on a bug hunt in the rewilding garden. Adventure through the woodland trail. Challenge each other to a game of mini golf. Discover in the sound garden. Get creative in the mud kitchen.



1st
August



Meet Bluey and Bingo

16th
August



Meet Peppa and George

30th
August



Meet Chase and Marshall

Visit sharnfoldfarm.co.uk for more information



Sharnfold Farm, Hailsham Road, Stone Cross, Eastbourne, BN24 5BU



**WIN
A CAR
WRAP WORTH
£3K!**

Visit & follow our socials
to find out how! [@signek signs](https://www.instagram.com/signeksigns)



Winners announced 1.09.23 T&C's Apply



Music courses for young people

AUDIO Active is a charity with a vision for better futures through music.

By **Gail McKay**

They offer innovative, accessible interventions that use music to support young people and emerging artists to reach their full potential.

This Summer, *Audio Active* will run rap and production sessions at *Leaf Hall*, enabling participants to explore their musical talents in a supportive environment. There will be a day session on August 29th, from 2:00pm – 6:00pm and workshops in September on the 5th, 12th and 14th from 5:30pm – 7:00pm. These sessions are open to young people aged 12 – 25 looking to express themselves through music and learn the skills and techniques of rap and

production from professionals. Regardless of skill level or preferred genre, these sessions allow young people to rap, sing, produce and record their own music.

By providing grassroots talent development through free access to projects, resources and support at different levels, *Audio Active* enables young people of all backgrounds to discover and nurture their talents.

If you would like to learn more about *Audio Active*, check out their website www.audioactive.org.uk and book onto a session at www.audioactive.org.uk/get-involved



Food&Drink



your print needs being served?

THINK CUSTARD

custard

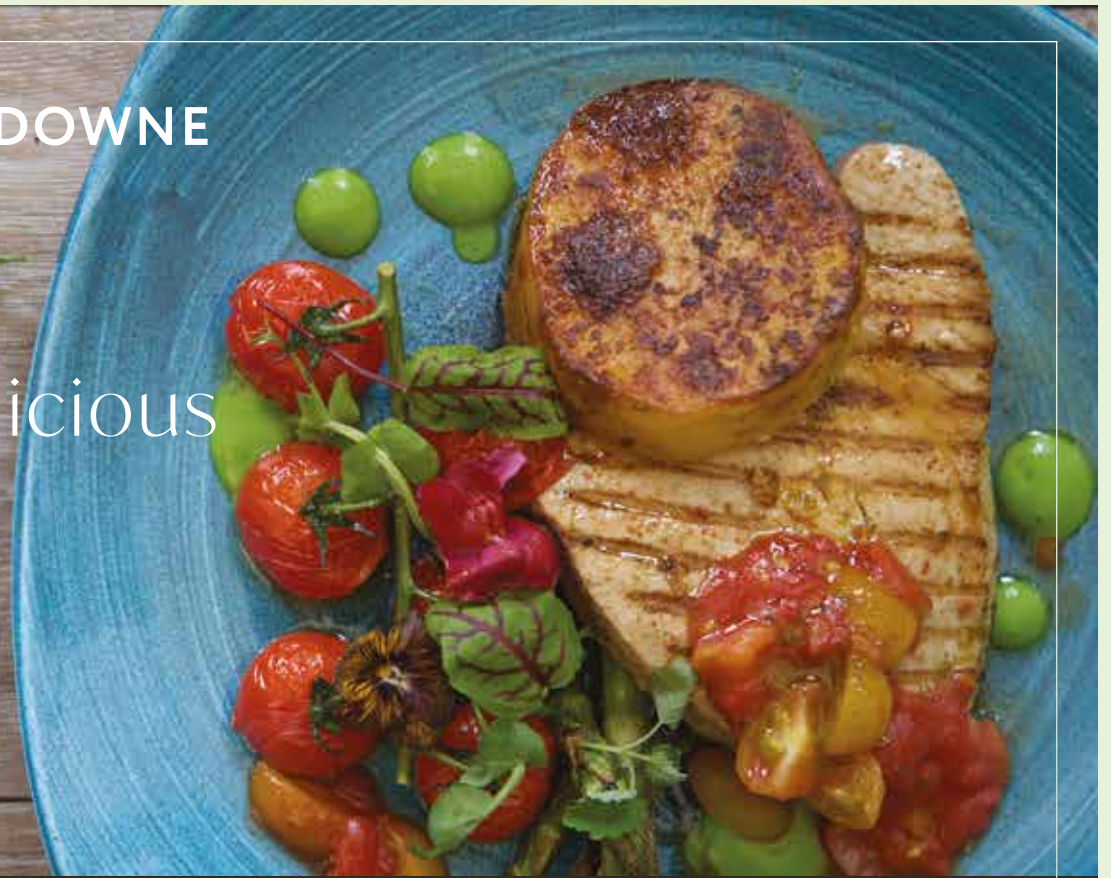
DESIGN MARKETING PRINT

01323 430303 instant@custard-design.co.uk

DINING AT THE LANSDOWNNE

Always delicious

Est. **1912**
Seasons



The perfect summer.

Picture the scene. A gentle stroll along the prom, the warm sun on your back, and the perfect spot for refreshment or lunch. When you see the big wheel - stop and head to The Lansdownne. Now you have two choices (depending on your walk). An elegant and relaxing afternoon tea or a delicious two courses for £22. Always sounds like an inspired idea. Enjoy your summer.

Two Courses
£22.00
per person

Afternoon Tea
~~£22.95~~
£16.95
per person

Champagne
Afternoon Tea
~~£27.95~~
£21.95
per person



Always inspired



THE LANSDOWNNE

King Edward's Parade, Eastbourne BN21 4EE www.lansdownne-hotel.co.uk 01323 725 174 [f](#) [@lansdownnehotel](#)

Enjoy this August at The Lansdowne

AUGUST is the perfect time to enjoy *The Lansdowne* and two great promotions we have underway.

By **Stephen Callis**

Our doors are always open for coffee, a bite to eat or a drink in our bar. Do drop in if passing by and make the most of our comfy lounges, bar or restaurant, 1912 Seafood and Steak.

1912 – two courses for £22

Throughout August we will continue with our popular 2 courses for £22 at our restaurant 1912 Seafood & Steak. Join us for all day dining and choose a starter and main course or main course and dessert. Plus, our £6 cocktail happy (two) hours is available daily between 5pm and 7pm.

Afternoon Tea Offer – August 2023

To celebrate Afternoon Tea week, we are offering afternoon tea during the month of August at the special price of £16.95 per person, instead of the usual £22.95. This offer is valid Monday to Friday throughout August 2023, excluding *Airbourne* (17th–20th August).

Join us for a selection of finger sandwiches, warm plain and fruits scones, a variety of cakes and pastries served on a three-tier stand in our sea view lounges. Includes your choice of tea or coffee.

£22.95- £16.95 per person Monday to Friday during August.

Please pre-book via our website or by calling us on **01323 725174**.

August event highlights Thursday 17th August to Sunday 20th August – Airbourne Afternoon Tea.

Join us for the 29th year of the *Eastbourne International Airshow* and enjoy our prime seafront location. We are taking bookings for afternoon tea to enjoy some indulgence accompanied by views of the accompanying display. Full afternoon tea served on 3-tier stands is only £24.95 or to include a glass of Prosecco at £29.95.

Friday 25th August – Luxembourg Wine Pairing Dinner.

Back by popular demand is to sample rarely available wines from Luxembourg. Enjoy a three-course dinner with matching wines. £55 per person. Book via **fizzonfoot.com**.

Follow us online | Sign up for our weekly email

Subscribe to our weekly email and be the first to hear of our forthcoming events, offers, dining promotions and competitions. Sent out each Friday; sign-up on our homepage. Plus, our social channels include regular updates and video footage not to be missed!

f @lansdownehotel
@lansdownehotel



4–13 Lansdowne Terrace
King Edward's Parade
Eastbourne BN21 4EE

www.lansdowne-hotel.co.uk
01323 725174
enquiries@lansdowne-hotel.co.uk
f @lansdownehotel

Great tennis facilities – and hopefully a new cafe too



A NEW café is on the cards for Old Town – but it will be more than just a new place to eat and drink.

By **Peter Lindsey**

Community tennis coach Craig Wells formed set2win in May 2020 when he took over the running of Old Town Rec tennis courts in Longland Road.

Turn the clock forward three years –

and the community now has sporting facilities to be proud of.

There are four top quality tennis courts, all available to book online and where coaching is also available.

You can buy an annual family membership for £45, or you can opt to pay and play. There are around 120 members.

But there's one important aspect missing – a café – and Craig is determined to change that.

He said: "We have to keep the four changing rooms for football, but our vision is to build a kitchen, servicing area, glass fronted.

"It will be a great place to come to eat and drink, with glorious views of the Downs looking out.

"There will be decking and the plan is to move the football pitch in front of

this area down the field so it allows us plenty of space.

"Our hope is that we will plough back a percentage of the profits back into the facility, ideally something for teenagers to enjoy, and to improve the pathway as well."

Craig is applying for grants to make the vision into reality.

Email Craig at: set2win@gmx.com

CARR TAYLOR

Premium English Sparkling and Still Wines delivered to your door, from England's first commercial producer of Sparkling Wine.

Carr Taylor Sparkling Rosé Wine
Ideal for your winter festive parties.

Our award winning Sparkling Rosé wine is perfect for celebrating with friends.

sales@carr-taylor.co.uk
01424 752501
www.carr-taylor.co.uk





Amazing reader offer!

THE View Hotel Eastbourne is offering all Bournefree readers a 20% discount off their entire food and beverage bill valid until 16th August 2023 using the discount voucher below.

By **Claire Prysor-Jones**

Why not indulge your palate at the Artisan Restaurant or Vista Bar Café with floor-to-ceiling windows and outdoor terraces displaying the hotels unique sea views. If you are looking for a light lunch with your most important person, a leisurely coffee stop with your furry friend or a traditional afternoon tea with mum or dad, then The Vista Bar Café is your place to be.

When it's time to unwind, the fully stocked bar awaits you with tempting wines, spirits, cocktails and refreshing beers whilst soaking in Eastbourne's atmosphere.

Our Vista Bar Café offers a vibrant, contemporary space overlooking Eastbourne's most idyllic backdrop.

For an extra dose of indulgence, our Artisan Restaurant delights with panoramic views across Eastbourne's seafront and using the finest products, you can expect classic food with some modern twists. The Artisan Restaurant offers a choice of menus ranging from a hearty Sunday carvery to à la carte dishes featuring



seafood, steak, halloumi and so much more for a truly satisfying dining experience.

With its stunning beach views and exquisite food, The View Hotel Eastbourne is the perfect location for a relaxed and sophisticated dining experience. Whether you're visiting for a laidback family get-together, a romantic meal or an elegant work dinner, our team takes pride in delivering exceptional service and



cultivating a welcoming atmosphere that feels like home.

So why not take up this limited 20% discount offer and indulge your taste buds?

Join the View Hotel Eastbourne and book now by calling **01323 433900** or visiting www.theviewhoteleastbourne.com

**Grand Parade, Eastbourne
East Sussex BN21 4DN**

Terms and conditions

- All entrants must be over 18. Pre-booking is advised but not essential.
 - Not to be used in conjunction with any other offer, promotion or discount.
 - The voucher is not redeemable for cash.
 - The voucher is only valid until 16th August 2023.
 - The voucher can only be used once and must be presented at the restaurant at the point of order to redeem the discount.
 - Only one voucher will be accepted per bill and is limited to 20% off the total food and beverage bill.
 - The hotel reserves the right to terminate the voucher program, including the terms and conditions, at any time without prior notice.
- The terms and conditions can also be found on [The View Hotel Eastbourne's website](http://www.theviewhoteleastbourne.com).



Get **20%** off
Food & Beverage
DISCOUNT VOUCHER
Valid until 16th August 2023

VISTA BAR CAFE *Artisan* EASTBOURNE
Grand Parade, Eastbourne
East Sussex BN21 4DN
01323 433900
www.theviewhoteleastbourne.com



FREE HEARING ASSESSMENT

We provide a complete range of hearing care services, adapting to your lifestyle and using the latest technology.

Throughout our 20 years of experience, we have seen dramatic improvements in the quality of our patients' lives, and we look forward to helping you too.

Visit our Eastbourne audiology practices to meet our team!

In partnership with

BARRACLOUGHS THE OPTICIANS

194 Terminus Road,
Eastbourne,
East Sussex, BN21 3BB

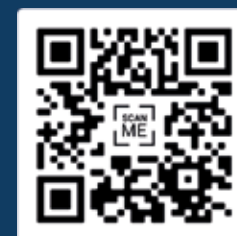
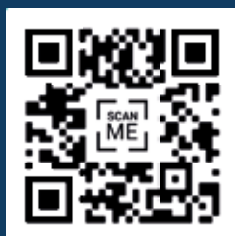
T: 01323 885 256
E: eastbourne@thcp.co.uk



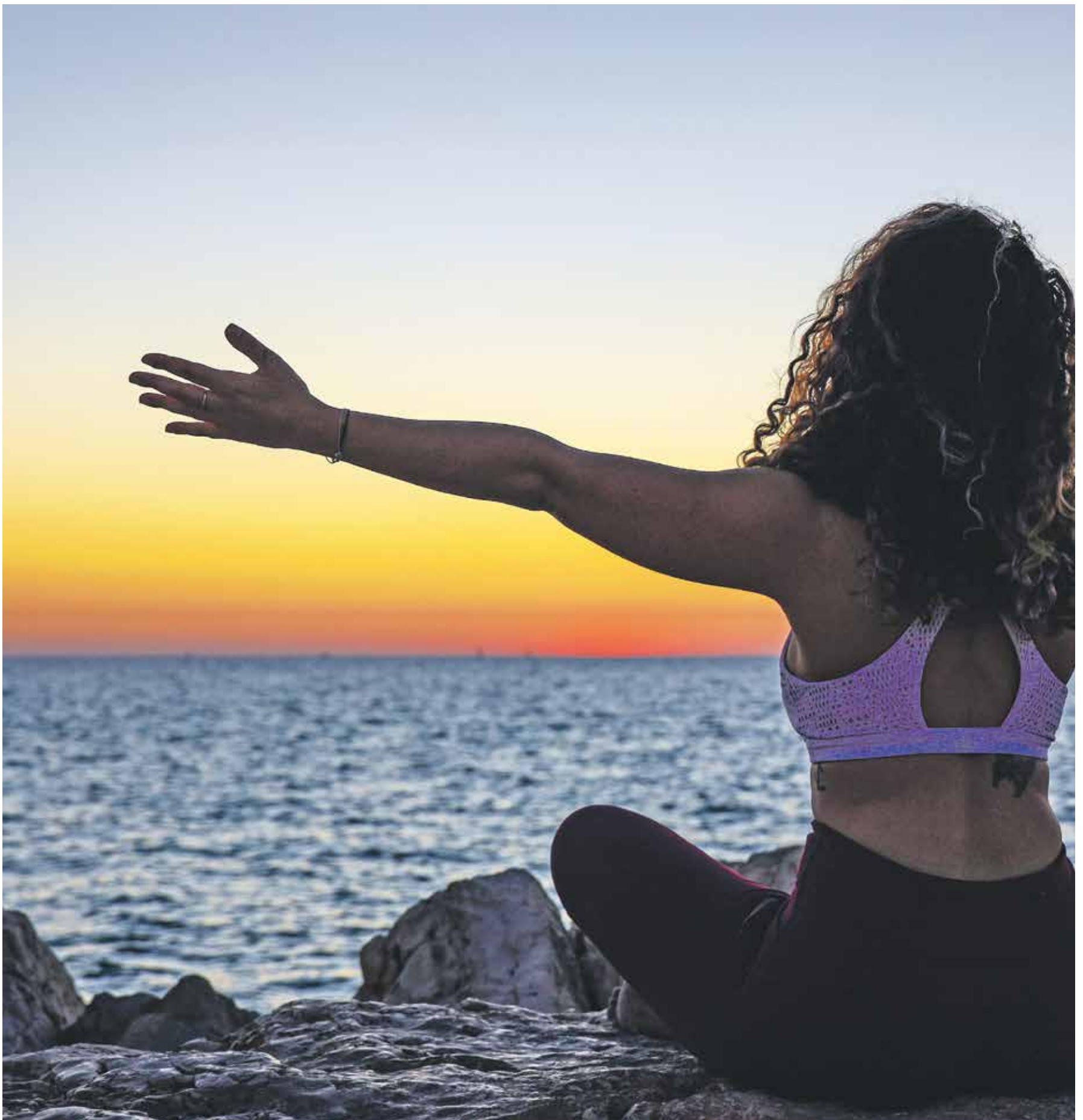
VICTORIA MEDICAL CENTRE

53a Victoria Drive,
Eastbourne,
East Sussex, BN20 8NH

T: 0800 52 00 546
E: eastbourneoldtown@thcp.co.uk



Health & Wellbeing



your brand need revitalising?
THINK CUSTARD

custard
DESIGN MARKETING PRINT

01323 430303 instant@custard-design.co.uk



Registered Charity No.1186901



Is seeking a part-time physiotherapist or Retired PE teacher
or
A person with a Doctor's referral Certificate
or
Someone with the relevant qualifications
who would like to take the training course
To deliver Pulmonary Rehabilitation Exercises.



Please apply in the first instance to BreatheEasy Eastbourne
on **07969 490379**
or email – breatheeasyeastbourne@gmail.com

Our website address is:
www.breatheasyeastbourne.org

A picnic fit for a King

POLEGATE Ramblers are more used to tramping through countryside and eating their packed lunches on the edge of a field or in the middle of a wood so their club picnic to celebrate the Coronation of King Charles III was a rare treat.

By **Gill Maddock**

To work up an appetite, members were taken on a ramble along rather overgrown footpaths before reaching the welcome shade of **Abbots Wood** for coffee (and real toilets!).

Fortunately, the leader was familiar with the maze of paths in *Abbots Wood* and thankfully everyone emerged a few miles later to return to a transformed site in nearby *Bushey Wood*.

They were greeted with flags, bunting, a real camp fire with marshmallows to hand, tea, coffee, cake and more cake, all of which was enjoyed with enthusiasm.

Everyone enjoyed the opportunity to get together while a few were able

to share distant memories of Queen Elizabeth's Coronation in 1953.

It was also an opportunity to say "Thank you" to Judy Kemp who was stepping down from her role as Social Secretary after many years and who organised the Coronation event.

Walk this way

Polegate Ramblers meet every Thursday at *Polegate Rec* for a choice of a short (5ish miles) walk or a long (10ish miles) walk where walkers car share to the starting point. Walks are led by experienced members who plan walks in the local area.

New walkers can come from any of the nearby towns or villages and are always welcome. Email polegateramblers@gmail.com



We always help our customers to enjoy life independently, whatever their age.



Mobility Hire

Mobility Scooters
Wheel Chairs
Powerchairs
Rollators

Servicing & Repair

We service and repair most makes and models of mobility scooters, powerchairs, wheel chairs and rollators.

SALES

We sell a wide variety of makes and models of mobility scooters, powerchairs, wheel chairs and walking aids.

**CALL NOW
01323 638078**



Visit Us:

13 Grand Hotel Buildings
Compton Street
Eastbourne
BN21 4EJ



Cllr Candy Vaughan, Eastbourne Mayor (centre), at the launch with Georgia and Theo.

Cornerstone Chiropractic – well worth a visit

CORNERSTONE Chiropractic is run and owned by husband-and-wife team, Theo and Georgia Kyriacou.

By **Peter Lindsey**

They opened their doors on June 12th and look forward to serving the community at large for many years to come!

Theo and Georgia are both Chiropractors. They graduated in 2014, but on opposite sides of the globe – Theo in Wales, and Georgia in Australia.

They have both been keen and active members of the profession since their graduation, and look forward to many more years of practice and care.

Cornerstone Chiropractic believe that everyone deserves the opportunity to access excellent care and service. They aim to offer bespoke care for all, and for a range of conditions including:

- Back Pain.
- Neck Pain.
- Joint Pain.
- Headache and Migraine prevention.
- Shoulder Injuries.

Are you struggling with back pain? Are you finding it difficult to get out of bed, or a chair? Are you struggling to play with your kids, or pick them up? Do you struggle with achy joints?

If you, or someone you know is suffering, why not book in for a consultation? They are doing a special opening offer of **£45!** This includes an in-depth case history, physical examination, Report of Findings and first treatment.

For more information please visit: cornerstonechiropractic.co.uk or pop into the clinic to ask one of their friendly team.



01323 573482
251 Seaside
Eastbourne BN22 7NT



Mobility Scooters From **£729***



Eastbourne Showroom

336/338 Seaside
 Eastbourne
 BN22 7RJ

(Next to Tesco Express)

01323 484 060

Mon-Sat 9^{am}-5^{pm}

*Prices quoted exclude VAT & are available to customers with a long term medical condition.

www.clearwellmobility.co.uk



FREE 2022 Brochure

BOUFR

Name _____

Address _____

Postcode _____

Post to: FREEPOST CLEARWELL MOBILITY



SYCAMORE GROVE

BARCHESTER HEALTHCARE

A luxury new care home *for you.*

Now welcoming residents



Sycamore Grove is a beautiful new care home in Stone Cross, offering tailored care in the very best surroundings.

We treat everyone as an individual, ensuring residents continue their much-loved hobbies and routines, and are served their favourite dishes in sociable dining rooms.

We're now welcoming residents and would love to show you around. Please call to arrange a visit:

01854 503 350

Sycamore Grove Care Home, Lilac Lane, Stone Cross, BN24 5NU
barchester.com/SycamoreGrove

Residential care • Dementia care • Respite care & short breaks
Café • En-suite bedrooms • Cinema • Spa bathroom • Hair salon

Charlotte's amazing recovery

AT the age of seven months, Charlotte Baldwin from Eastbourne could only move her eyes following a stroke.

By **Peter Lindsey**

Aged 12, she is now able to swim, ride a trike, drive a powered wheelchair and use a walker with one-to-one support.

Determination

Her proud family has put these achievements down to the very specialist support she has received at *Chailey Heritage School* and their daughter's relentless determination.

Charlotte was born healthy until she was struck down by a rare genetic disorder – Glutaric Aciduria Type 1, aged seven months.

She became very unwell and suddenly lost all ability. All she could move was her eyes.

Mum Mariel Baldwin said: "She is a very determined and incredibly kind little girl.

Thanks to Chailey

"She can now do far more than just use her eyes, and that is all down to *Chailey Heritage* and their input.

"*Chailey* has been able to help Charlotte in a multitude of ways. She leads a really active life now which is incredible. With support, she is able to go swimming, ride her bike and use a stander.

"For once in her life, I can take a deep breath and just enjoy being her mum and seeing her achievements.

"She now uses *Whatsapp* and everyone knows when she sends me

a message because I get so excited and show everyone around me."

Mariel says Charlotte being at *Chailey* 'just fills her with hope.'

She said: "Thanks to *Chailey*, I believe that she will become a valid member of society.

"She is comfortable being cared for and she sees her friends being cared for as well, so she doesn't have an issue with it. She will have peace in her life."

Amazing achievements

Julie Tilbury, one of the specialist teachers at *Chailey Heritage School* said that the children and young people at *Chailey Heritage* get exactly what they need, and their achievements are amazing.

Julie said: "They are treated with dignity and respect and we support them to be as independent as possible.

"They get the physical activity they need and the support that they need.

"They might learn to do something by themselves, or they may direct someone to help them do it.

"We support them alongside the child, with the child, and not to the child. That is really, really important.

"All staff at *Chailey* have a passion to get the best out of life for the children here.



"You won't find anyone here who doesn't have that passion."

Chailey Heritage Foundation is a charity providing education, care and transition services to children and young adults with complex physical disabilities. Their mission is to give disabled children and young adults every opportunity to pursue their fullest potential.

You can watch a short film on Charlotte's journey:

<https://vimeo.com/833828017>

Here is a clip of Charlotte in her walker:

<https://vimeo.com/chaileyheritage/charlotte>





A lifestyle
tailored
to you

Residents' quality of life is at the heart of everything we do, helping individuals to stay active and independent so they can live each day to the full.

If you're considering care call
01323 917313.

Inspected and rated



Trusted to care

**Bowes House care home
Hailsham
careuk.com/bowes-house**

care UK

Your lifestyle, your way at Bowes House care home

At Care UK's Bowes House care home in Hailsham, we'll support you to continue living your life the way you choose while delivering award-winning care in a place you can call home.

Our highly trained teams are experts in providing high quality care from residential, nursing and dementia care, to short term care.

A lifestyle tailored to you

At our 'good' CQC rated home our team is passionate about supporting you to enjoy a fulfilling life.

We'll learn all about your interests and preferences so we can create a fully personalised lifestyle plan that you'll enjoy whether it's gardening, cheese and wine socials or playing chess.

Everything under one roof

Bowes House offers luxurious facilities, including a coffee shop, hair salon and beautiful landscaped gardens.

Our chef-led kitchen teams are passionate about providing high-quality food using fresh, local produce, and there's always a choice of nutritious and delicious dishes at every meal.

Trust us to care

At Care UK, we've been delivering high-quality, person-centred care for over 40 years. We pride ourselves on the transparency of our care quality and fee information – ensuring you can trust us to care from that very first step of your journey into care.



To find out more about
Bowes House, please call
01323 917313.

Bowes House care home
25 Battle Road,
Hailsham BN27 1DU
careuk.com/bowes-house

A beautiful home for all



NESTLED in a rural setting in Hellingly is the 90 bed *Hailsham House*.

By **Richard Lawson**,
Manager, Hailsham House

Home to the newly refurbished *Beech House, Hailsham House* will soon be providing an additional 32 beautifully designed ensuite rooms.

Offering independent living, but with the benefit of 24-hour support, and boasting the latest automated care and call-system for people with dementia

and nursing care needs, *Beech House* really is a home for all. "We're excited for *Beech House* to welcome its first residents in August 2023" said Richard – General Manager.

Beech House also provides an on-site hair and beauty salon, deluxe spa bathroom, relaxing communal areas, and beautiful landscaped 'all year round' gardens. '*Daphne's Café*' and the '*Garden Lounge*' amongst other great facilities, help to create a warm and friendly community atmosphere

– giving residents the chance to relax, socialise and dine with friends, family and the *Hailsham House* team.

Beech House joins the existing three care communities, each with their own character and feel. This allows *Hailsham House* to offer a home from home, and the right personalised care package to couples, with sometimes very different needs, meaning they can stay together...

If you would like to find out more about *Beech House*, or to see for yourself just why *Hailsham House* is renowned for offering great care,

please call our manager, Richard on **01323 442050** or email direct – chip@aurem-care.com



Hailsham House

Let our family look after yours

Residential living with 24-hour support including nursing needs & dementia care

32 beautifully designed ensuite rooms ready for you to move in

State of the art support & care systems

Delicious & nutritious menu options

Plus fabulous facilities that include:

Hair & beauty salon, an elegant cafe, spacious gardens & more...

Call us today on 01323 442050 Email us at chip@aurem-care.com

Visit us at Hailsham House, New Road, Hellingly, BN27 4EW

www.aurem-care.com

Feel Safe

Feel Respected

Feel At Home

Property



need a home for your print?
THINK CUSTARD

custard
DESIGN MARKETING PRINT

01323 430303 instant@custard-design.co.uk

The Builders Club

For All Your Building Requirements



The Transformation team

COMPLETING over 1000 projects over the last 25 years, *The Builders Club Ltd*, has provided a first class service throughout Sussex.

From refurbishments, extensions, loft conversions, garden rooms, kitchens, bathrooms, driveways, repointing, decoration, rendering, plastering, structural works, Cedral cladding, conservatories and orangery's.

Building new houses to Code 3 sustainability and the full restoration of the iconic *Belle Tout Lighthouse* in 2010, filmed and televised on Channel 5's 'Build a New Life' in the Country.

They have the experience, innovation and the service to complete your project to a high standard that they will be proud of.

Garden rooms

Adding much need additional living space in to your home, often cheaper than an extension, their fully bespoke

By **Gail McKay**

garden rooms are fully insulated and completed to an exceptionally high quality and standard.

As an official Cedral Cladding Installer and Millboard Decking installer, their design team can create your perfect living space.

Cedral cladding offers a transformation far superior to many other cladding systems, with a 10 year guarantee and a variety of colours and designs. Cedral cladding can bring much needed weather proofing and a vibrant style to your home.



Extensions

Extensions can provide a anything from a small additional space enlarging a room or kitchen to opening up your home to create a completely new design and living spaces, their bespoke extensions can create your dream.

Their design and engineering team can help you realise your project in the comfort of their showroom in Seaford.

Bathrooms and kitchens

Their Bathroom fitters are accredited by the Guild of Master Craftsmen and the Federation of Master Builders so you are in safe hands.

Your kitchen may just be the epicentre of your home so you need kitchen fitters who can make it robust, comfortable and stylish.

“

We continuously strive to improve, not only our service, but also our range of services to our customers.

Their experienced and reputable kitchen fitters can do just that. With years of experience, they will ensure that your kitchen is built to last. They cater for all budgets so just let them know what you have to spend and they will work with you to create an affordable option that wows visitors and keeps the family happy too.

A full design service is also available.

Visit their showroom and chat to one of their design team.

Windows and doors / bifold doors

The Builders Club offer a complete range of windows, doors and bifold doors including UPVC and Aluminium, Bespoke and Timber.

They are ‘Fensa’ registered and products come with a 10 year insurance backed guarantee.

Patios and drive ways

The Builders Club has its very own porcelain patio and specialist drive way team.

Fantastic offers are available for all of their customers.

From full garden restorations to refreshing tired gardens.

Call them now for free quotation.



Incredible extensions

The Builders Club master craftsmen have created some of the most exciting conservatories and house extensions.

Architect and Engineers drawings

From design to completion, planning permission, building regulation applications to structural works and calculations, *The Builders Club* can provide all architectural and engineering paperwork.

Highly accredited

The Builders Club have multiple, top accreditations so you know you are in safe hands. Their accreditations include:



Outdoor spaces

A fantastic sunken garden transformation involving both building and landscaping work resulting in a brilliant outdoor space.

Get in touch

The Builders Club provide high-quality building services for their valued clients. Their team goes above and beyond to cater to each project’s specific needs. “We continuously strive to improve, not only our service, but also our range of services to our customers.”

To find out more about their builders or to arrange a quote, get in touch with them today.

Stunning bathrooms

The Builders Club’s accredited, reputable and affordable bathroom fitters are here to help.



The Builders Club
For All Your Building Requirements

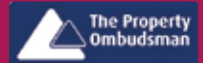
01323 490283
07951 160465
thebuildersclub@gmail.com
www.thebuildersclub.co.uk

Head office:
20, Sutton Park Road, Seaford,
East Sussex BN25 2DD



**GINGER &
SANDERS**
PROPERTY SALES & LETTINGS

Est. 2012



Get your sales and lettings off to a flying start



Contact Ginger & Sanders, your local Lettings and Estate Agency

- Eye catching For Sale and To Let boards
- All properties on Rightmove, Zoopla and OnTheMarket
- Excellent Residential Knowledge
 - Over 90 years' experience

“passionate about property”

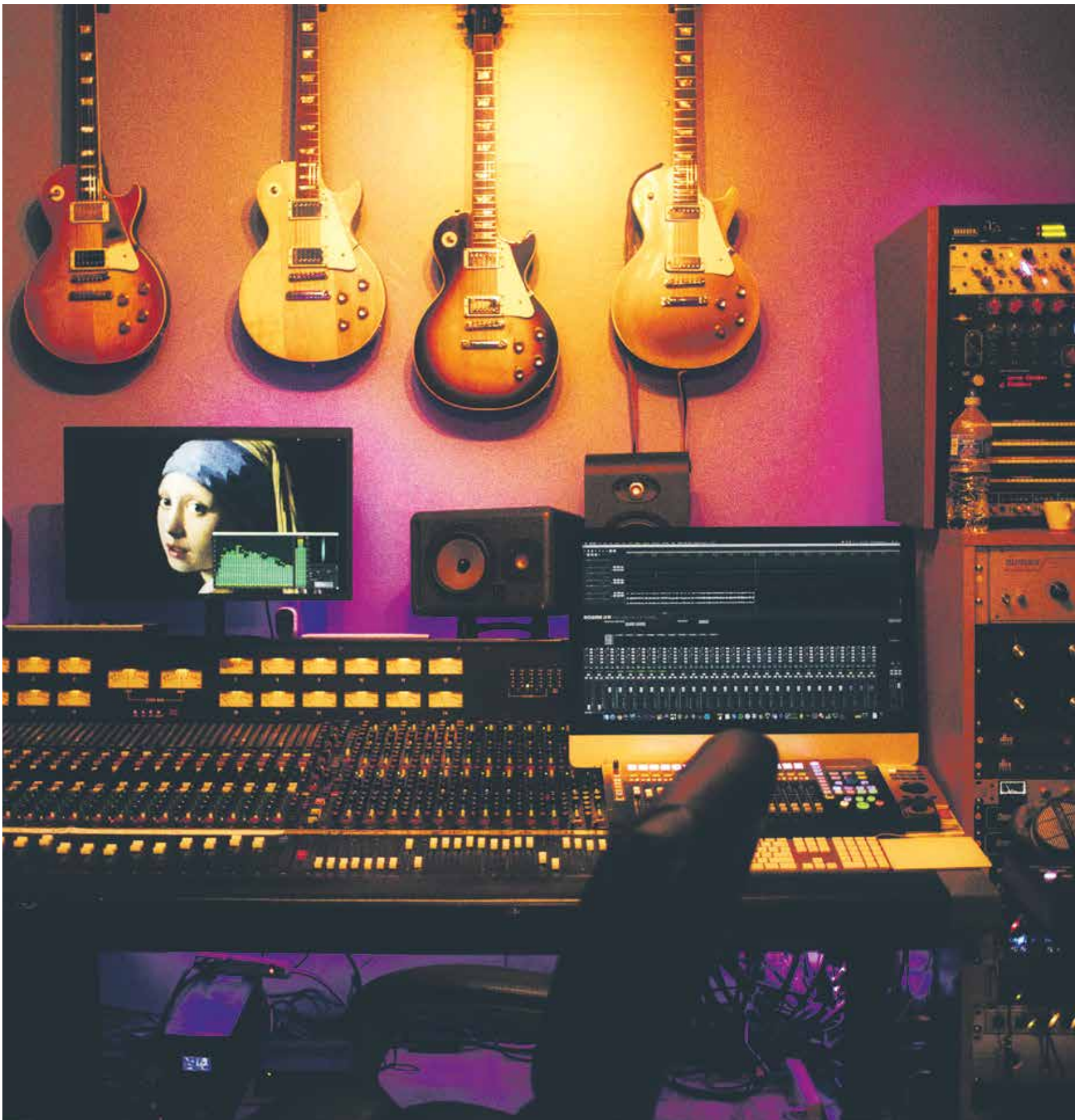
185a Langney Road, Eastbourne, East Sussex BN22 8AH

01323 701702

info@gssalesandlettings.com | gssalesandlettings.com

Contact Daniel, James, Lisa or Peter for a **FREE**,
no obligation market appraisal.

The Arts



bringing your art to life?
THINK CUSTARD

custard
DESIGN MARKETING PRINT

01323 430303 instant@custard-design.co.uk

Unmissable!

THE casting is now announced for the H.G. Wells classic *The Invisible Man* by Ken Hill at the Devonshire Park Theatre this summer and a wealth of West End talent features on the impressive cast list.

By **Harry Farmer**

In alphabetical order the cast features: **Suzie Chard** (*Oliver* West End, *Hard Cell*, *Netflix*) is Mrs Hall and Frida, with **Gillian Ford** (*Everyone's Talking About Jamie* West End, *Mamma Mia* UK tour) as Mrs Statchell, **Brendan Hooper** (*The Importance Of Being Earnest*, *Vaudeville Theatre*) as Dr Cuss and Colonel Adeye, **Devon-Elise Johnson** (*Titanic the Musical* UK tour, *Half a Sixpence*, West End) is Millie, PC Jaffers and Dr Kemp are

played by **David Partridge** (*Mirror Crack'd* – UK Tour), **James Peake** (*Da Vinci's Demons*, *Fox*), takes the roles of The MC / Rev. Bunting / Teddy, **Steven Pinder** (*Wicked*, *Brookside*) is Squire Burdock. Taking the role of Griffin (*The Invisible Man*) is **Phil Stewart** (*An Inspector Calls* UK Tour, *The Curious Incident of the Dog in the Nighttime*, *Gielgud Theatre*) with **Ben Roddy** (*The Provoked Wife* and *Venice Preserved*, RSC) (from 28th July to 17th August) and **Adam Shorey** (*Aladdin*, *Devonshire Park Theatre*) (from 18th to 26th August) as Marvel.

The creative team is led by director **Chris Jordan**, with illusions by internationally renowned magician and former president of the Magic Circle **Scott Penrose**, set design by **Julie Godfrey** (*How the Other Half Loves*) and lighting by **Chris Davey** (*Touching the Void*, *Mathew Bourne's The Car Man*).

The appointment of **Scott Penrose** as magic consultant is a huge coup for the production team, Scott is the Honorary Vice President of The British Magic Society and was previously awarded the Magic Circle Stage Magician of the Year. He has an impressive history of creating illusion effects for numerous West End shows and films and has also worked with *Cirque du Soleil* creating magic effects, illusions and quick-change techniques.

At this summer's theatrical event experience **The Invisible Man**, at the *Devonshire Park Theatre*, Eastbourne from 28th July – 26th August, theatregoers will experience a theatrical and visual spectacle



packed with magic and comedy, this show promises fabulous fun suitable for all ages.

A sleepy Sussex village has an unexpected visitor one night, but clearly there is something very wrong with this stranger. What follows is a thrilling tale of daring adventure and unforgettable theatre. This summer NOT seeing is believing.

The Invisible Man, Devonshire Park Theatre, Eastbourne from Friday 28th July – Saturday 26th August. Tuesday to Saturday evening performances 7.45pm, Wednesday and Saturday matinees 2.30pm, tickets from £23, for full details see eastbournetheatres.co.uk or call **01323 412000**.

EASTBOURNE THEATRES PRESENT

THE THEATRICAL EVENT OF THE YEAR!

'NOT SEEING IS BELIEVING'

Illusions by Scott Penrose

EASTBOURNE THEATRES
DEVONSHIRE PARK THEATRE

28 JULY - 26 AUGUST

Tickets from £23

01323 412000 • eastbournetheatres.co.uk • [T](#) [F](#) [I](#) [O](#) #eastbournetheatres

Featuring West End Cast



Suzie Chard



Gillian Ford



Brendan Hooper



Devon-Elise Johnson



David Partridge



James Peake



Steven Pinder



Philip Stewart



Ben Roddy
(28 Jul – 17 Aug)



Adam Shorey
(18 – 26 Aug)

Half Price Child Ticket
Max. 2 per adult

WINTER GARDEN

A FAMILY-FRIENDLY COMIC-CON STYLE EVENT
AT THE WINTER GARDEN, EASTBOURNE!



WynterCon X

SAT 14TH & SUN 15TH OCTOBER 2023!

EDUCATION WORKSHOPS, COSPLAY,
EXHIBITORS, PROPS, STEAMPUNK, RPG ZONE,
AUTHORS, PHOTO OPPORTUNITIES,
& SO MUCH MORE!

FOR MORE INFORMATION AND TICKETS VISIT

WYNTERCON.ORG

"IT DOESN'T MATTER WHAT WORLD YOU COME FROM,
YOU'RE WELCOME IN OURS!"



THE BAVARD BAR

A delightful blend of TED, comedy & Radio 4. Sort of.

WHEN? 2nd Wednesday, every month
Doors open 7pm

WHERE? Devonshire Park, College Rd
Eastbourne BN21 4JJ

TICKETS £12 in person or online
www.townereastbourne.org.uk

STARTS 7.30PM

TOWNER Eastbourne

bavardbar.co.uk

AVOIDING LIFE'S QUESTIONS TO GIVE YOU THE ANSWERS

EASTBOURNE DIGIFEST.

FRIDAY
22ND SEP 2023

VISIT
EASTBOURNE DIGIFEST
CELEBRATING ALL THINGS DIGITAL IN EASTBOURNE

Come and discover how you can be part of Eastbourne's thriving digital industry

- Exhibition of local digital businesses
- Industry talks and skills workshops, from AI to digital marketing
- Careers advice
- Meet other members of the digital community

🐦 Early bird tickets available now

EASTBOURNEDIGIFEST.COM

digifest@bournefree/1



Marmalade 2023

CAMPERS and visitors were absolutely blown away by the Festival Events' three day festival. Previously a VW event, it has now expanded to incorporate MORE music, MORE campers and MORE fun.

By **Gail McKay**

Friday evening kicked off with DJ Dunk and DJ Nicky B who gave us live mash ups and old skool garage. We didn't let the rain spoil our fun and we were rewarded with a larger-than-life Queen tribute, Fat Freddie and the Queens. The mood was electric, so much joy in the crowd, we knew we were in for a cracking weekend.

Raring to go

We grabbed a bit of shut eye before we were back to the arena, raring to go on Saturday. The *Lightning Fibre* stage was host to a non-stop, Rock, Pop, Ska, Funk and Techno spectacle.

Festival Events's own director fronted one of the most original takes on rock/pop mash ups. *The Pat Butchers*, who ploughed their own furrow in this area, specialising in female songs, butcher's aprons and Pat Butcher earrings. A riot of music from across the decades.

Fleetwood Mac UK are renowned for being one of the best tribute acts in the business, Stevie Nicks and her crew worked their magic, and the crowd LOVED it.

Eastbourne stalwarts, *Large 90s*, delivered an intoxicating hour of all things dance and techno, techno, techno, techno!

Kudos to the organisers for getting superstar DJs Dave Pearce and Brandon Block for the Saturday Night slots, they blew the crowd away with their big room, energetic anthems.

Cockney Opera

Sunday provided the perfect distraction from the inevitable return to reality. Finishing with *P45 Band*, a SKA outfit who are credited with creating their own genre, 'Cockney Opera,' Cue dad dancing and plenty of skanking.

The *Camper Marmalade* Festival was a gloriously memorable

experience. So full of fun, I loved the 'Carry On' theme, with huge caricatures, providing delightful selfie opportunities.

Something for everyone

The kid's area was fantastic, huge inflatables, and plenty of room for parents to relax while the children were safely entertained.

Food and drink was constantly available, with pizzas, burgers, Mexican, Thai, cakes, cocktails, fresh coffee and Festival's own Wicked container Mobile Bars. Traders were varied with lots of fun merchandise to take home memories of a brilliant weekend.

I can't wait for next year!



The Eastbourne Feastival is back!!

THE towns number one family music festival returns to Hampden Park August Bank Holiday weekend.

By **David Monckton**

The Feastival Events team are entering their 8th year with the successful family event and this year promises to be the best yet... larger KIDS ZONE, more TRADERS, more STREET FOOD, a brand new VIP AREA, more MUSIC... more of EVERYTHING you love!

Music for the three day event gets underway midday Saturday 26th August with a stunning mixture of tribute artists and local bands.

Saturday highlights include **THE GUNS 'N' ROSES EXPERIENCE**, Madness tribute **SPECIAL KINDA MADNESS**, Sunday highlights include, Eurythmics and Chic tributes **YOURYTHMICS** and **CHIC TO CHIC 'A TRIBUTE TO NILE RODGERS & CHIC'** with the Monday attraction being the Ska & Two Tone cover band **P45**.

For full stage line ups please visit our website www.feastival.events or head to our social media pages.

Fun for all

Event organiser Dave Richardson says, "We are very excited to have added a large inflatable area in the KIDS ZONE that includes a stunning 180ft assault course, wipe-out balls and a helter skelter. These are just a flavour of what to expect but the most

attractive thing about this new area is you pay a one off fee for the day and continue to return whenever you want, there is no time restrictions."

A selection of funfair rides and stalls will also be available within the KIDS ZONE area, adults as well as the youngsters will be able to enjoy the fun of the fair!

The event also continues their **UNDER 16's GO FOR FREE** offer. No ticket is required to redeem this offer, only that all children must be accompanied by a paying adult.

Fantastic food

Feastival always provide a great selection of street food vendors, this years includes Thai, Pizza, Burgers, Mexican and even everyone's guilty pleasure, British Fish & Chips, *Feastivals* very own large mobile container bars serving beers, wines, cocktails, prosecco's, spirits and more.

The weekend has widely become one of the best in the South East for families, it really is set to be three glorious summer days of music, food, activates, laughter and making memories.

Book now!

You can book one day, two day or even weekend passes for all three days directly from www.onlineticketseller.com Don't forget, UNDER 16's GO FREE.

Website: www.feastival.events
Facebook: **Feastival Events**

GROUP 1 HAILSHAM BMW

Lightning Fibre
Hyperfast Broadband

FEASTIVAL

Tributes

BRUCE SPRINGSTEEN

GUNS N' ROSES EURYTHMICS★

Sex Pistolz
JERSEY BOYS
dolls
MADNESS
CHIC
NEIL DIAMOND
PINK
THE EAGLES

the Pat Butchers
LEE HARVEY OSWALDS
THE REDCATZ

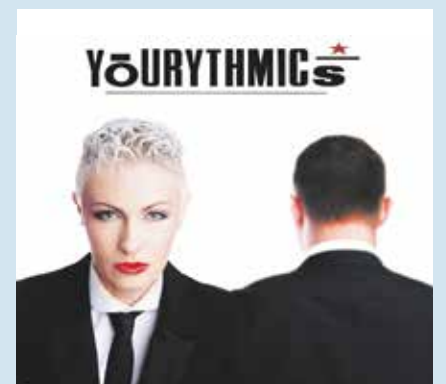
THE DIAMOND PROJECT
SOUTHERN BOUND

dunk
N4B
SOLITARY MAN
P45
SKA

URGENT ORANGE SKAVANA

KIDS GO FREE VIP AREA STREET FOOD KIDS FUN ZONE
FACE PAINTER MARKET TRADERS BARS-COCKTAILS & MORE

Stagecoach HAMPDEN PARK EASTBOURNE
26-27-28 AUGUST 2023
WWW.ONLINETICKETSELLER.CO.UK Seahaven FM



Suzanne Du Toit at Farleys

FOLLOWING her recent commission by the *National Portrait Gallery* to paint the writer **Jeanette Winterson** for their collection, artist **Susanne du Toit** is delighted to be exhibiting a selection of her further portraits of female authors.

By **Gail McKay**

This exhibition is a record and celebration, among other things, of female collaboration.

Painting these women in her own vibrant and intuitive way, Susanne expresses the zeitgeist, bringing to the canvas individual personalities that may otherwise remain a mystery to the readers of each author's works.

Now displayed at *Farleys*, these twenty portraits continue Lee Miller's legacy of championing female creativity and community. The exhibition is open every Thursday and Sunday until 3rd September

Farleys House & Gallery

Lee Miller and Roland Penrose moved to the Sussex countryside to live at *Farleys* in 1949 and filled their home with a collection of contemporary art treasures.

Today *Farleys* is the base of the *Lee Miller Archives* and *The Penrose Collection* from which books,

exhibitions and reproduction rights are privately managed by the family.

Relax in the garden

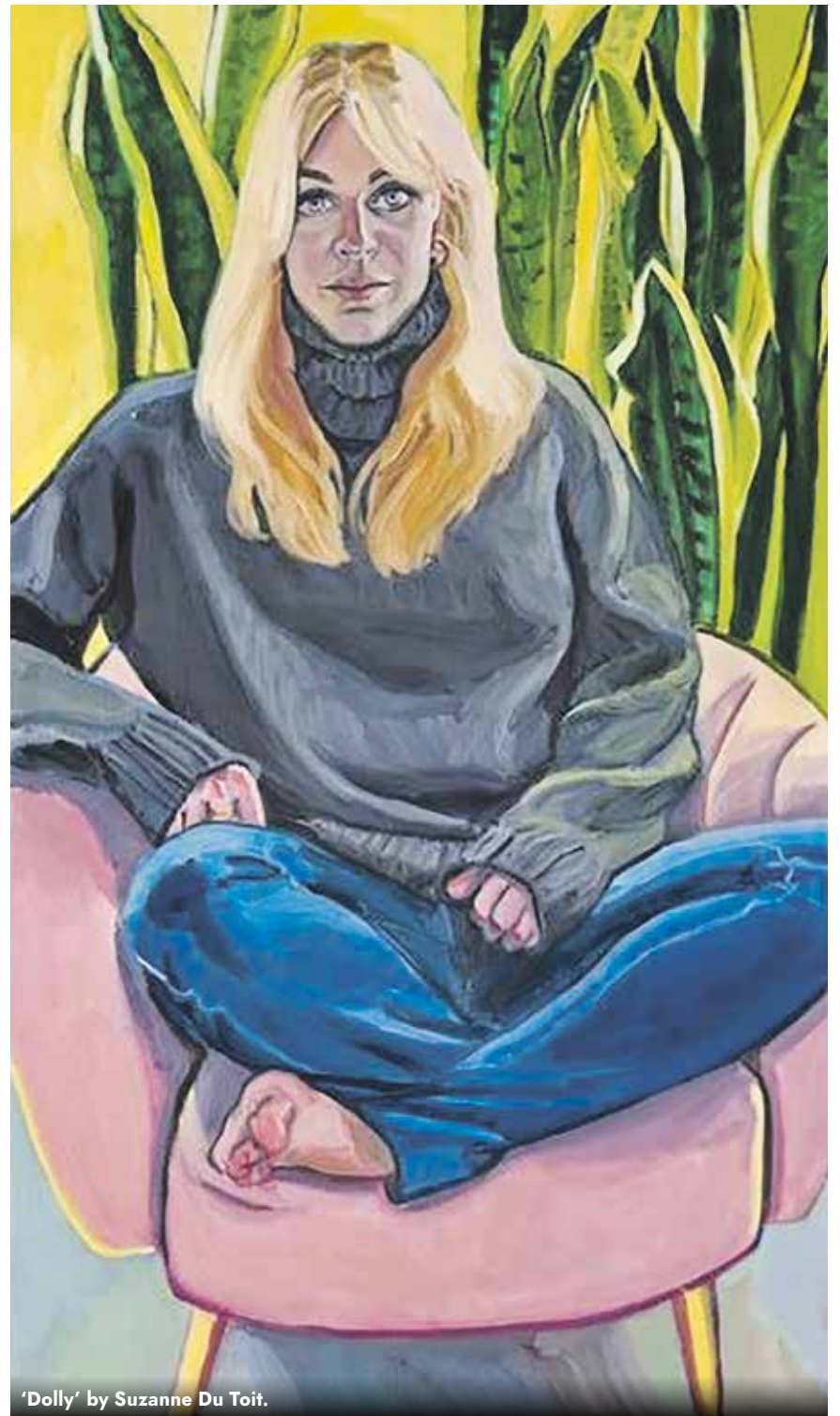
The House & Gallery and Garden open every Sunday and Thursday (April – October) offering visitors the chance to take a tour of the house, relax in the garden, enjoy exhibitions, and light refreshments in the gallery and experience the extraordinary atmosphere of *Farleys*.

Susanne du Toit's show runs from 13th July to 3rd September 2023 Sundays and Thursdays.

Lee Miller Roland Penrose
FARLEYS HOUSE & GALLERY
HOME OF THE SURREALISTS

www.farleyshouseandgallery.co.uk
+44 (0)1825 872856

Muddles Green
Chiddingly
BN8 6HW



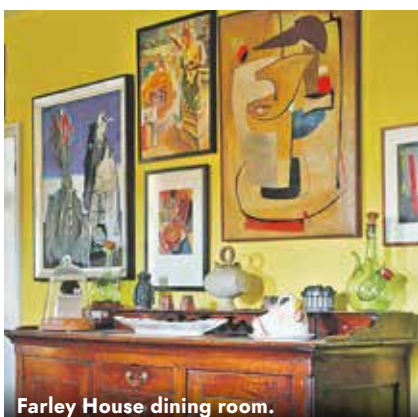
'Dolly' by Suzanne Du Toit.



'Lucy' by Suzanne Du Toit.



'Alice' by Suzanne Du Toit.



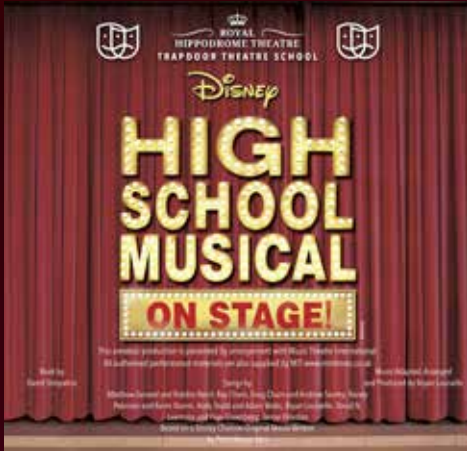
Farley House dining room.



Garden sculpture by Sioban Coppinger.



ROYAL HIPPODROME THEATRE



High School Musical
Friday 4 August



Screaming Blue Murder Comedy Club
Saturday 5 August



Lost in Music
Friday 11 August



Simon & Garfunkel: Through The Years
Saturday 12 August



Don't Stop The Music
Wednesday 2 & Wednesday 30 August



Dinosaur Adventure Live
Sunday 13 August



Rabbit Rabbi
Friday 18 August



ABBA Gold
Saturday 19 August



Islands in The Stream
Saturday 16 August

Box Office 01323 802020 | royalhippodrome.com
106-114 Seaside Road, Eastbourne, BN21 3PF

Fish and Chips is named best film

IN June we featured the *East Sussex Moviemakers* with photographs of members filming ‘on location’ on Bexhill promenade.

By **Peter Lindsey**

Their action – with the help of actors from *Brightlights Theatre group*, and others from *Eastbourne and Hailsham* – was to produce a film under the theme ‘Nothing Ventured . . .’

It was for a competition entered by amateur film making clubs in Sussex and surrounding counties.

Human sized seagulls

East Sussex Moviemakers’ film – entitled *Fish and Chips* – was entered for the competition known as *The Albany*.

The idea was sparked by a Pantomime production performed by a local theatre group where two of the actors became human sized seagulls.



This led to one of the members writing a script, and the creative acting, and skilful editing resulted in a highly amusing eight-minute film.

Fish & Chips was judged to be the best comedy.

Join the lights, camera, action

The group meets at 2:00pm on the first and third Tuesday of each month at *St. Lukes Parish Centre*, Stone Cross.

Email: mfwebster@btinternet.com



For more information please go to: www.eastsussexmoviemakers.com

THE MAKERS DIRECTORY

THE Makers Directory is the online directory of all the makers and artists that work in and around Lewes and Eastbourne.

By **Harry Farmer**

Use *The Makers Directory* to search for the perfect hand-made gift, find a craftsperson who will repair a much-loved item, or discover someone who is able to teach you a new skill at a workshop.

It's a brilliant way to discover, support and buy from your local makers!

You can keep up with their latest news by following them on *Instagram* [@themakersdirectory](https://www.instagram.com/themakersdirectory) themakersdirectory.co.uk

FEATURED ARTIST Amanda Cardoso

I'm an Eastbourne based printmaker specialising in linocut. My work is inspired by the nature, architecture and fiction of East Sussex – with a mid-century twist.

Part of a community

Here's my story... from a lockdown start up, my relationship with *The Makers Directory* helped me connect with a wider audience and engage with other makers. Art can be a solitary endeavour, so it's great to be part of a community of makers.

I first exhibited in 2021 at the Arts Council funded *Tide Mills project*

where my work was projected onto the live music yurt. Then an exhibition of linocut prints at the *National Trust's Lamb House* in Rye. These celebrated the resident E F Benson, portraying the real houses occupied by characters from the *Mapp and Lucia* novels. Since then I have featured in the *Sussex Contemporary* exhibition and in *March* of this year, I participated in a live art, music and dance collaboration at the *Towner*.

Inclusive, accessible, affordable

All the while, my core belief has remained that original art should be inclusive, accessible – and affordable. Fabulous local businesses display and sell my linocut prints and greeting cards featuring Old Town's historic architecture, and the wonderful *Elliott's Millinery* hosts me for *Artist Open Houses*.



www.themakersdirectory.co.uk/directory/amanda-cardoso-printmaker

amanda@amandacardosoprintmaker.com
www.amandacardosoprintmaker.com
[@amanda_cardoso_printmaker](https://www.instagram.com/amanda_cardoso_printmaker)

Help defeat Wizard Whack

THIS Summer, you can be part of a very special live theatre event for all the family. *Rainbow Rae And The Colour Stone Rescue!* is a brand new, multi-sensory musical, brought to you by the acclaimed team at *UnderWired Productions*.

By **Katherine Camps Kilgour**

The evil Wizard Whack has stolen the 7 magic stones that create every colour there is. A young brave heart named Rae has volunteered to find the stones and bring them back where they belong.

If the mission fails all colour will drain away and the world will be black and

white forever! So, will you help? Travel with Rae to the 7 Rainbow Realms? Help find the clues and solve the puzzles necessary to defeat Wizard Whack and bring the Colour Stones back home?

Interactive and accessible

The show will play at the *Shackleton Hall* at *Eastbourne Theatres* from Tuesday 22nd August to Sunday 27th August, with two performances daily.

Inclusive, interactive and fully accessible, lots of laughs are guaranteed in Kali



Kali Peacock with her family.

Peacock's unique production which places families with disabilities, and those without, at its heart.

For everyone

Every performance will be relaxed and will include multi-dimensional effects such as smell and touch as well as live music, written by the Tony Award-winning composer Sarah Travis, played by a three-piece band.

UnderWired Productions passionately believe that physical and financial barriers should not prevent children from accessing live theatre. Tickets are heavily subsidised by charitable donations and grants, with full concessions available to those experiencing hardship.

Kali says, "Every child should have access to theatre. The sheer joy of being part of an audience, that incredible shared experience, the sound of laughter and happy squeals... surely every child deserves it!"

Rainbow Rae And The Colour Stone Rescue will play at three South East venues during the Summer Holidays.

The show will premiere at the *Izzard Theatre* in Bexhill-on-Sea playing from 8th to 11th August before moving to the *Hailsham Pavilion Theatre* from 14th to 19th August and finishing its run at *Eastbourne Theatres' Shackleton Hall* from 22nd to 27th August.

www.underwiredproductions.com

AN UNDERWIRED PRODUCTION WITH ORIGINAL MUSIC BY SARAH TRAVIS

**RAINBOW RAE
AND THE
COLOUR STONE
RESCUE!**

by Kali Peacock

COMMUNITY FUND FOYLE FOUNDATION



SUPER Summer SALE NOW ON!

Only available whilst stocks last!



SAVE
£800

AMBER SQUARE CORNER SET

WAS: £2499.99

NOW: £1699.99



SAVE
£130

TRURO CHIMNEA

WAS: £329.99

NOW: £99.99



SAVE
£80

MAHOGANY BENCH

WAS: £329.99

NOW: £249.99



SAVE
£300

ARUBA ROUND 4 SEAT DINING SET

WAS: £1100

NOW: £799.99



SAVE
£50

SAHARA A 450 GAS BBQ

WAS: £599.99

NOW: £549.99



SAVE
£200

SOLANA 4 SEAT DINING SET

WAS: £699.99

NOW: £499.99



SAVE
£300

PANAMA 4 SEAT DINING SET

WAS: £899.99

NOW: £599.99



SAVE
£200

BERMUDA 4 SEAT DINING SET

WAS: £999.99

NOW: £799.99



SAVE
£300

PANAMA 6 SEAT SET

WAS: £1399.99

NOW: £999.99



SAVE
£400

OPAL 4 SEAT SQUARE DINING SET

WAS: £1399.99

NOW: £999.99



SAVE
£700

PANAMA SOFA SET

WAS: £2499.99

NOW: £1799.99



SAVE
£80

BODMIN METAL CHIMNEA

WAS: £149.99

NOW: £69.99



Green and pleasant

AUGUST is usually one of the hottest months of the year – making watering essential. That said, it's going to be hard, if not impossible, to follow the weather we had in June. Try to use grey water wherever possible, especially as water butts will be running low and we are experiencing hose pipe bans. August is traditionally holiday-time, so you might need to enlist the help of friends and family to look after the garden while you are away. When you are at home, take the time to prune Wisteria and summer-flowering shrubs such as lavender once they've finished flowering.

By **Geoff Stonebanks**

The last official month of summer is the perfect time to enjoy your garden while, hopefully, it's still at its best. I'm certainly finding it more relaxing at *Driftwood* with no public days this summer, just visitors by arrangement.

Over 400 have seen the garden so far since 1st June. If you have not visited but have a desire to do so, then we close the garden gate on the 11th August, so get your booking in quick. Just call me on **01323 899296** or email visitdriftwood@gmail.com

August gardening jobs

If you want a good show of flowers next spring, make sure you water evergreen shrubs like camellias and rhododendrons thoroughly this month, this will ensure that next year's buds develop well. Try to keep your patio container plants well-watered and don't forget to feed them to encourage more flowers. If you have tall or top-heavy dahlias and lilies it is important to stake them to prevent wind and rain damage. Don't forget to dead-head lilies for a better flower display next year, along with annual bedding plants and perennials to encourage them to flower into the autumn and stop them self-seeding.

Keep an eye on your borders and cut back faded perennials to keep them

tidy. If you have seed heads on plants around the garden, leaving some in place can be attractive and allows the plant to self-seed in the surrounding soil. If you enjoy propagating new plants for next year, remember to take cuttings of your favourite, tender, perennials such as pelargoniums and fuchsia now. Now is the time to prune climbing roses and rambling roses, once they've finished flowering, unless of course they are repeat-flowerers in which case leave them.

National Garden Scheme.

There are a couple of gardens opening for the charity this month, not far from the town. *Camberlot Hall* in Camberlot Road, Lower Dicker, Hailsham, opens across the weekend of the 19th and 20th from 2–5pm with entrance £6. This is a 3-acre country garden with a lovely view across fields and hills to the South Downs. It was created from scratch with all design, planting and maintenance completed by the owner. There is a lavender lined carriage driveway, naturalistic border, vegetable garden, shady garden, 30 metre white border and dahlia garden.

Fairlight Hall in Martineau Lane, Hastings makes a welcome return to the scheme on the same weekend too. See a recently restored stunning garden with formal gardens extending over nine acres and surrounding the Victorian Gothic mansion. The garden features semitropical woodland avenues, a huge contemporary walled garden with amphitheatre and two 110 metre perennial borders above and below ha-ha with far reaching views across Rye Bay. It opens from 10am to 4pm with entry £8, not to be missed. Full details on both gardens can be found at www.ngs.org.uk

Oleanders

Last winter was by far the coldest and wettest few months we have had since moving to Sussex in 2004. I and many other gardeners lost plants that would usually survive. In my case that was several oleanders. Oleander plants (otherwise known as *nerium oleander*) are among the most versatile of shrubs, (pictured in header) with dozens of uses in southern and coastal landscapes. They tolerate a wide range of conditions, including difficult soil, salt spray, high pH, severe pruning, reflected heat from pavements and walls, and drought. The one thing they can't withstand, though, is winter temperatures below -7 °C. However, in cooler climates, you can grow an oleander plant in a container and bring it indoors when temperatures drop, or as I have been doing successfully for several years, heavily fleecing them outdoors.

Last winter, as normal, I protected all five shrubs in the garden with several layers of protective fleece. Sadly, when I removed the protection in the Spring, three had obviously died! Two, however, a red and white one, survived and are flowering well in the garden now. The red was in the ground and the white in a large container, so, no logical explanation. That said, I decided to cut the three damaged plants right back and I am pleased to say that they are now showing signs, albeit slowly, of new growth, so will live again for next year.

Read more of Geoff's garden at: www.driftwoodbysea.co.uk

Geoff's garden, *Driftwood* has appeared on BBC2 *Gardeners' World*, was a finalist in *Gardeners' World Magazine Best Small Space* and a finalist in *Lewes District Business Awards 2018* as 'The Tourist Destination of the Year'. Read the amazing 5-star reviews on *TripAdvisor*. Amazing feature in *Coast Magazine* and an American magazine, *Flea Market Garden Style*. Read all about Geoff's trips to Buckingham Palace and Royal Garden Party in 2018 and his work for the community.

New Private Dentist and Implant Centre in Eastbourne

Our outstanding team of dentists and dental professionals can help with every aspect of your dental care.

Welcoming New Private Patients



General Dental Care

Routine check-ups
Hygiene visits
Fillings



Restorative Care

Dental implants
Crowns and bridges
Dentures



Smile Make-overs

Tooth straightening
Tooth whitening
Teeth in a Day

Register Today! Call 01323 356066

Our 2023-24 Adult Course Guide is out now!

NEW
COURSES
STARTING IN
SEPTEMBER



Pick up your
FREE copy today
or scan the QR
to view online.

OVER 500 COURSES STARTING IN SEPTEMBER
KEEP THIS GUIDE...
You have the...
...in January
...with
...!

FREE COURSES

Develop skills in crafts, cooking, creative writing and more.

ONLINE COURSES

Gain qualifications from the comfort of your own home.

QUALIFICATION & LEISURE COURSES

Utilise our facilities and tap into our expert tutors' knowledge.

UNIVERSITY COURSES

Retrain, upskill and excel with a range of qualification courses.

WE ALSO OFFER COURSES ONLINE AND AT OUR CAMPUSES IN **EASTBOURNE, LEWES, HASTINGS AND NEWHAVEN**