

FREE

SEE INSIDE FOR OUR SPECIAL BEST OF EASTBOURNE FEATURE.



05/24 Issue 047
May 2024

Pages 25-38

Bournefree

www.bournefreelive.co.uk



Newly
Opened

need print?

CONTACT CUSTARD

01323 430303

instant@custard-design.co.uk

ignite

PR & Engagement

info@ignitepre.co.uk

07751 290574 / 07710 934574

**media • events • pr
training • social media**

Jürgen Matthes since 1982
Student Organisation

WE REQUIRE ADDITIONAL HOST FAMILIES

for German students in all parts of Eastbourne, Westham, Polegate and Hailsham (up to 4 students per family)

We also require **CLASSROOM & HOME TEACHERS**

PLEASE RING EB 744020

www.matthes.uk

Meet Your New Neighbours



HALLMARK

WILLINGDON PARK MANOR
LUXURY CARE HOME

We've put the  kettle on ready.

 **Lightning Fibre**
Hyperfast Broadband

Upgrade to Full Fibre Broadband
www.LightningFibre.co.uk




For breaking news 24/7, log onto our news website at
www.bournefreelive.co.uk



Peter Lindsey, Editor.

Contacts

Email: andy@bournefreemag.co.uk
 Telephone: 01323 430303

Editor

Peter Lindsey
 Email: pete@bournefreemag.co.uk

Advertising

Email: gail@bournefreemag.co.uk
 Telephone: 01323 430303

Email: harry@bournefreemag.co.uk
 Telephone: 07809 443027

Production

Custard Design, Eastbourne
 Email: artwork@bournefreemag.co.uk
 Telephone: 01323 430303

Images

Cover: Hallmark.
 Best of Eastbourne: Modify Media.
 Health: Taryn Elliott.
 The Arts: Birmingham Museums Trust.

Our next edition will be distributed from June 1st. Make sure you are a part of it.

custard
 DESIGN MARKETING PRINT

ignite
 PR & Engagement

Bournefree expands with new magazine

BOURNEFREE is delighted to announce that we are expanding.

By **Peter Lindsey**

We have been publishing our monthly magazine now for just over four years, March 2020 – this is issue 47.

And we have been delighted by the growth and support we receive each month from our advertisers, supporters and readers.

We have also grown massively our online reach through our website www.bournefreelive.co.uk

And our social media reach, in particular www.facebook.com/bournefreemagazine.

Now *Bournefree Publications* has taken over the *Hailsham Eye*, a magazine published every two months.

Owner Andy Thomas said: “We are very excited to be expanding, something we have been talking about in the past few months.

“We are very proud of *Bournefree* and how we have established the product in our local communities.

“We see great potential with the *Eye*, and we look forward to publishing it. The next edition will be out mid-May, and please talk to the team if you want to reach out to the people of Hailsham and neighbouring villages.”

Best of Eastbourne

Back to *Bournefree*, and it’s been a great month as we produced The Best of Eastbourne, as well as our usual subjects.



I’ve had the pleasure of meeting some great people this month, including:

- The team at *Chalk Farm Hotel* in Willingdon
- *Team Chatfield*, taking part in May’s *Race For Life*
- Staff and owners at the new *Willingdon Park Manor*
- and staff at *South Downs Health and Care*.

Gail, Harry, Andy and I love being out and about in the community connecting with various groups and individuals.

If you haven’t already, please connect with the team at *Bournefree*.

Bournefree

Bournefree is becoming more and more popular each month, and we want to make it easier for you to promote your business or organisation.

Gail and Harry are here to help you with your marketing and to raise awareness of what you do.



gail@bournefreemag.co.uk
 01323 430303



harry@bournefreemag.co.uk
 07809 443027

Every care has been taken to ensure that the information in this magazine is correct. Neither the publisher, Bourne Free Publications Limited, nor contributors can take responsibility for loss or damage resulting from errors or omissions. Bourne Free Publications Limited does not endorse the accuracy of the advertisements or the quality of the products/services being advertised.

Information provided by businesses and community organisations are provided directly by their own representatives. Please direct any queries or comments regarding content directly to the organisation.

Copyright © 2024. Bourne Free Publications Limited. All rights reserved. No part of this magazine may be reproduced in part or whole without express permission of the editor.



Charity launches £30,000 appeal to mark 30th birthday

CHALK Farm Hotel and Learning Disabilities Centre in Willingdon is celebrating its 30th anniversary in 2024.

By **Peter Lindsey**

To mark the birthday, the charity has launched a fundraising drive to raise £30,000.

And it's inviting the public and businesses to reach out and take part in the campaign.

Shanice Dolan, Head of Fundraising, said: "Primarily, *Chalk Farm LDC* provides adults with learning disabilities and/or autism the opportunity to train and gain experience in hospitality or horticulture – or indeed both.

"We have up to 40 students who attend weekly from as far afield as Brighton because there are very few places in Sussex that can offer what we do.

"The aim is to give them the necessary skills to secure employment. Some are paid here to work weekends; others have moved on to local hotels, garden centres and more.

"Those studying horticulture grow fruit and veg in our student-made allotment, which we then sell at our various events. They also learn about wildlife, the environment and make our gardens guest-ready!"

Chalk Farm is also a popular hotel with an amazing setting so close to the Downs. It hosts weddings, parties and wakes, and is also available for lunches and coffee.

Shanice said: "We are very busy with weddings, which is a great boost to the charity, and we are available for any function. All enquiries are welcome.

"All we ask is that if you are coming for coffee or lunch, if possible please phone us before you set off, just in case we have a large function going on.

"We also welcome any groups that need somewhere to meet on a regular basis. For example, we host the *Rotary Club of Eastbourne AM* every Friday at 7am – and that can be for up to 35 people, and growing."

Chalk Farm is an old grade 2 listed building in regular need of repair. That's why the £30,000 Appeal is so important.

Shanice said: "The money raised will basically go on a bit of everything – the students and their training, maintenance of the hotel itself, and also our wonderful gardens.

"And people donating by *JustGiving* can actually choose where they want their money to go. We think that is very important."

So, why support Chalk Farm Hotel?

"Because we have been providing an invaluable service for 30 years supporting adults with learning disabilities. They are just great, they love it here, and we love supporting them!"

"We want to thrive for another 30 years – and beyond. Please donate, or reach out and speak with us.

"We are a small charity doing incredible things for incredible people. We do care, and we would love to hear from people."

To donate, please go to: www.justgiving.com/campaign/chalkfarmldc-30k

To speak with Shanice, email shanice@chalkfarmldc.co.uk or call **01323 503800**.



At heart of the community

LIGHTNING Fibre broadband has confirmed it will be a platinum sponsor for the third consecutive year of Eastbourne Carnival on Saturday 25th May.

By **Peter Lindsey**

The firm, based in Polegate, recently confirmed new ownership, and has reaffirmed its community focus.

Its meeting that commitment by supporting a range of popular events across East Sussex throughout the year.

As well as Carnival, Lightning Fibre has donated £500 to Environment Hailsham to help the volunteer group

grow flowers for the town's hanging baskets and community spaces.

Each year, Environment Hailsham grows and plants 10,000 flowers and shrubs across the town.

Rob Reaks, Sales and Marketing Director, said: "Our ethos is that, as a local business, we should support our local communities.

"We have done that for many years now and we are pleased to pledge our support to Carnival and Environment Hailsham.



"Community events rely heavily on the support of local businesses, and we're proud to play our part."

Pictured above: Eastbourne Carnival CIC Chair, Mina O'Brien with Lightning Fibre Representatives, Eastbourne Seafront, March 2023.

Pictured right: His Worshipful The Mayor of Hailsham, Cllr Paul Holbrook, with Environment Hailsham Chair and Secretary, David Harris and Julie Cottingham, with Lightning Fibre's Rob Reaks.



Sale Now On

A Lightning-Fast Full Fibre Broadband Network, delivered by locally-based Lightning Fibre.

Lightning Fibre
Hyperfast Broadband

Double your speeds for free in our amazing sale



~~150Mbps~~ *Most popular*
300Mbps
£24 per month
Promo Code **DOUBLE150**

~~500Mbps~~ *Hyper Fast*
1Gbps
£34 per month
Promo Code **DOUBLE500**



01323 380260
www.LightningFibre.co.uk

Sales ends 30th June 2024. T&C's Apply.

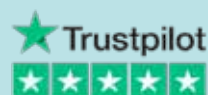




Photo credits: Media Attention, Modify Media and Graham Huntley.



It's Carnival time in Eastbourne!!!

THIS year, *Eastbourne Carnival* is set to be more spectacular than ever as we prepare to go 'Into The Wild'!

By **Gail McKay**

Taking place on Saturday 25th May – here's what you need to know about this year's event.

Parades

The Carnival will officially start at 11:45am with a small Town Centre parade beginning at the *Enterprise Centre* – with costumes by the Award winning / renowned *Sunshine International Arts*.

Members of local dance troop – *Cherry Dance* alongside the *Stix Drummers* will parade through to *Victoria Place*.

The main Carnival Parade sets off at 2:00pm from *Fisherman's Green* and will parade down towards the *Wish Tower Slopes*.

Spectators are encouraged to get to the route by 2:00pm to ensure they

do not miss the 50+ entrants as they make their way to the *Bandstand* for their main performance.

Street Party

A Street Party will be held after the main parade from approximately 4:30pm in *Victoria Place* after the Carnival finishes with DJs playing an array of Carnival Music, including *Soca*.






Mina O'Brien, Chair, said "I am delighted that we have over 50 entrants representing our local community, and we have a few entries again from the Latin community – which proved to be very popular last year.

A HUGE thanks to our sponsors and partners – and all of our entrants and volunteers who are contributing

towards what we hope will be a fabulous event for the town."

Keep up to date with the latest news from Carnival by following their updates on Social Media.

-  [eastbourncarnival](#)
-  [EBCarnival](#)
-  [eastbourncarnival](#)



Concept convenience

DENNIS Silva, owner of *Watsons Newsagent* in the *Beacon*, was very excited to show us the site for his new business.

By **Gail McKay**

Adding to an already vibrant area of Seaside, locals will now have another shopping option.

This store is part of a new wave of '**Londis Concept Stores**' intended to give the shopper a completely new experience when shopping locally.

I was particularly excited to hear about '*The Cooler*' which is a beer

cave. Much like supermarkets in France, this is a walk in wine and beer cooler, still a new concept in the UK.

The 1,300sq ft store meets the needs of shoppers with a range of fresh, chilled, and frozen foods, along with groceries, on-the-go solutions, and an impressive bespoke bakery zone.

There will be enhanced interior design with bright graphics, lighting and integrated signage. The layout is designed to improved customer flow and experience.



Wealth of choice

Expanded product ranges, will include more fresh and healthy options, a *Costa* coffee point, a pizza counter, a sandwich bar, and a wealth of international food choices.

Customers will be impressed by eye catching illuminated signage and branding, as well as digital promotions throughout.

This is the cutting edge of local shopping, engaging customers and providing a new experience.

These concept stores aim to provide a more modern and appealing shopping experience while maintaining the convenience and accessibility that customers expect from a neighbourhood convenience store.

Opening early May, so keep an eye out for this incredible addition to Seaside, where the traditional 'corner shop' business has really upped its game.

Londis
104–106 Seaside
Eastbourne BN22 7QP

We support families with disabled children and young people in Sussex



www.amazesussex.org.uk

Registered charity number
1078094

WRAS launch summer appeal

EAST Sussex Wildlife Rescue & Ambulance Service (WRAS) had a remarkably busy year in 2023, with several months setting new record-breaking figures.

By **Gail McKay**

Throughout the year, they handled over 5965 casualties, which is 904 more than in 2022. The peaks were seen in June, July, August, September, October, and November. June marked a significant milestone as the charity dealt with over 1000 casualties in a single month for the first time in its history.

Trevor Weeks MBE, the founder of WRAS, praised the dedicated team for their efforts in helping the local wildlife that had been rescued, usually as a result of someone calling the casualty centre.

Vulnerable Conservation list

More than half of the mammals we treated are on the Vulnerable Conservation list, and 52% of the birds are listed as Red or Amber by the RSPB, indicating a decline in their populations. This increase strained all our resources to the maximum, coinciding with a decrease in our fundraising income. Regrettably, we anticipate similar challenges for 2024.

At WRAS, we are once again preparing for a rise in casualties

during the upcoming months. We are already rescuing fledglings being blown out of trees and have taken in an orphaned badger cub. If the trend of increases continues as it did last year, our already limited resources will face even greater pressure.

Due to the ongoing cost-of-living crisis, the charity anticipates low income levels in 2024. Despite being a modest charity, East Sussex WRAS now incurs annual running costs of approximately £550,000.

Dedicated care team

To maintain our top-notch wildlife rescue service, we will need to raise an additional £34,000 to support the extra dedicated staff required for the Spring/Summer period. This includes extended reception coverage for rescue coordination into the evenings, additional hours for our dedicated Care Team to admit casualties and provide urgent first aid, and an extension of our Veterinary Surgeon's hours to care for the extra casualties.

Any support you are able to give to help the vulnerable and precious wildlife across our county would be greatly appreciated.

www.wildlifeambulance.org



EAST SUSSEX WRAS WILDLIFE RESCUE

VITAL SUMMER STAFF APPEAL

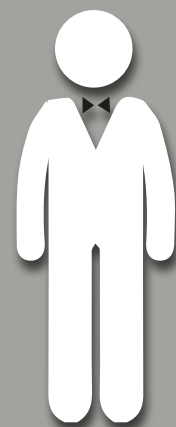
We urgently need your help to avoid us having to cut back on essential services this summer!

PLEASE HELP US FUND:

- ✓ Up to 1000 casualties a month!
- ✓ Dedicated Veterinary Support
- ✓ 24hr Rescue Co-ordination
- ✓ Expanded Care Team

SO WE CAN HELP SAVE MORE WILDLIFE

REG CHARITY 1108880
www.wildlifeambulance.org



My name is Colin and I operate a small handyman business called

manfriday
home services

I can decorate, assemble furniture, put up shelves, paint sheds or fences.

In fact, whatever the job is, just ask me if I can do it.

JET WASH

Patio - Pathway - Driveway - Decking

Looking forward to Barbecue season? Now is the time to refresh your decking and patio.

Professional Jetwash is not just for cosmetic reasons.

It helps keep your patio safe for friends, family and pets.



Call **07709 176365**

manfridayhomeservice@gmail.com



Meet Your New Neighbours

We've put the  kettle on ready.

Newly
Opened



Relax in luxurious
comfort



Enjoy award-winning
residential, dementia &
nursing care



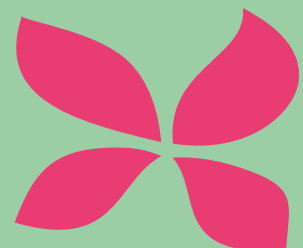
With room for
a furry friend

Pop by for a chat with Ian or Emma, take
a tour, and see what's possible.

Willingdon Park Manor, Eastbourne, BN22 0AB

01323 306 286

hallmarkcarehomes.co.uk



HALLMARK

WILLINGDON PARK MANOR
LUXURY CARE HOME



A little bit louder and a whole lot of fun

THE Deerfold Centre may have spent the last 30 years quietly helping to make life a little better for people within Eastbourne, but now it's ready to blow its own horn.

By **Peter Lindsey**

Visitors may not hear trumpets on Saturday, June 1st, but there could be some nifty guitar riffs, and the odd drum break at the centre's first Open Day since a re-vamp of its meeting hall at 233 Seaside.

Special guests will be members of an intrepid band of guitar-makers who will be demonstrating the

results of their labours alongside other pieces care-fully crafted in the Langney Men's Shed. Their workshops at Langney Priory, Etchingam Road, provide a space for older people to enjoy the company of others whilst being involved in 'making and mending' projects.

Enjoy a cuppa and cake

With a bit of good weather, Deerfold Open Day visitors can enjoy a cuppa and cake in the centre's courtyard being developed with the help of Shed coordinator Andy Fisher

and other members. The nice new planters are a special feature.

Previously a branch of the NatWest bank, the centre has a challenging seaside garden space, and also is being helped by horticulturist Christine Mason in its choice of greenery. Christine will be a roving Plant Expert during Open Day hours of 11am to 3pm.

The centre, run by the Deerfold Trust charity, offers low-cost meeting space for non-profit-making groups

promoting health and well-being within the community. Originally set up to promote spiritual healing, its remit now embraces a wider range of therapies and activities.

Stress-relieving and health-enhancing practices like Qigong, yoga and dance, now find their place beside groups focussed on supporting people with specific physical, mental or emotional difficulties.

For more information please visit: www.deerfoldcentre.co.uk



A living space for all seasons

With soaring energy bills why not replace your existing polycarbonate or glass conservatory roof with a **new tiled and insulated roof** and save money on keeping your conservatory cosy this winter.

Call now for a free, no obligation quote on **01323 844944**

solid conservatory roofs Ltd

**33 South Street, Eastbourne
East Sussex BN21 4UP
www.solidconroofs.co.uk
info@solidconroofs.co.uk**

www.solidconroofs.co.uk 01323 844944



THE FAMILY STORE WITH A WHOLE LOT MORE!

FROZEN FOOD

AMAZING NEW FROZEN DEPARTMENT BEST VALUE IN TOWN

NEW



Now and Retro Sweets
a Spoonful of Sugar

OPEN 7 DAYS A WEEK
www.aspoonfulofsugaruk.co.uk



NOW WITH OVER 200 JARS!

Original Joffee Crumble

aspoonfulofsugaruk



SLIM BUTCHER
BUY 2 GET A FREE TRAY OF STEAK

BBQ PACK £40



FROZEN BBQ PACK £25



SLIMBUTCHER.COM

CHECK OUT OUR AMAZING DEALS





**THE FAMILY STORE
WITH A WHOLE LOT MORE!**



**GARDEN CENTER NOW BIGGER THAN EVER
MASSIVE DEALS ON EVERYTHING**

SOLAR LIGHTING

DECORATIVE

TRELLIS



TOPIARY

LANTERNS

**ESK
PLANTS**



Durstons
Amazing Compost

ESK COMPOST DEALS



**50 Ltr
3 for
£15**



**40 Ltr
3 for
£16**



**50 Ltr
3 for
£17**



**3 for
£12
25 Ltr**



**40 Ltr
2 for
£8**



**40 Ltr
2 for
£8**



**50 Ltr
3 for
£12**



**50 Ltr
3 for
£16**



Find us on
facebook

ESKWarehouses



**Courtlands Rd,
Eastbourne BN22 8TR**

Foodbank impact

2023 IMPACT report shines spotlight on Eastbourne Foodbank's year.

By **Iain Luxford**

More than 28,000 food parcels were provided for families in crisis in the Eastbourne area during 2023 and residents were helped to manage over £170,000 worth of debt.

These are among the headlines of the *Eastbourne Foodbank 2023 Impact Report*, which was published this week. The report is an overview summary of what the foodbank has done during the year.

Among the other key findings were that 159 tonnes of donated food was managed through the foodbank warehouse, and 1,280 families with serious financial problems were given support and advice by the foodbank's welfare and debt advisers.

Those advisers also helped people in real need access more than £1million in benefits that they were entitled to during 2023. The report also highlights the fact that *Eastbourne Foodbank* now has 185 volunteers.

Eastbourne Foodbank's Chief Executive, Howard Wardle MBE,



said: "2023 was a very challenging year and we have again worked very hard as a team to help as many people as possible to combat the effects of poverty and help them live independent, dignified, and fulfilling lives."

The welfare and debt advice work, which is so important to helping people back on to their feet, was beginning to yield results, Howard added, "There is, however, still a long way to go."

"I would like to thank our volunteers, our staff team, trustees, grant

fundors, private donors of finance and food, churches, schools, and many local businesses, for standing with us during 2023. Their support has been invaluable."

Jess Holliday, *Eastbourne Foodbank's* Deputy Chief Executive said community support and giving continued to be vital. She said: "It's essential for the continuation of our work that we receive regular financial donations, however small, as well as food. These enable us to keep offering the debt and welfare rights advice that help people on their journey out of poverty."



ANGELA WILLIAMS (MICB)

Enhance your business with personalised bookkeeping and administrative services. Specialising in support for individuals, small businesses, and solo entrepreneurs, I offer:

- Professional Bookkeeping
- Research Assistance
- Proofreading
- Transcription Services

As a licensed member of the Institute of Certified Bookkeepers (ICB), I am dedicated to delivering high-quality, efficient services with flexible pricing, including pay-as-you-go options.

Your success is my priority. Let's work together!

Contact me to streamline your operations:

www.topadminservices.com

07938 491032

info@topadminservices.com

SPECIAL EVENT

6th MAY 2024

10 am – 2 pm
EASTBOURNE BOWLING CLUB

3 SAFFRONS ROAD

www.eastbournebowlingclub.com
01323 724340

EVERYONE WELCOME
OPEN DAY

AND SPRING FAIR



FUN FOR ALL

FOOD AND DRINKS * CAKES FOR SALE
TOMBOLA * BOTTLE RAFFLE * PRIZES

CASH OR AUCTION

in Association with Eastbourne Auctions Your Local Saleroom with the International Reputation

Bring items along for a **FREE Friendly Advice CASH OFFER** or entry into our forthcoming Auction

To book an appointment or use the Royal Mail **FREE** postal service call us on **01323 431444** option 2-1-1



Abstract Painting

Sold for
£6,000



Sold for
£4,100



Sold for
£2,000



Sold for
£1,600



Sold for
£1,300



Sold for
£1,050



Sold for
£975



Sold for
£875



Sold for
£750



Empty Jewellery Boxes

Sold for
£650

Valuations are FREE in 2024

Items Wanted

Gold and Silver Jewellery in any condition
Costume Jewellery • Watches working or not
Coins, Medals and Militaria • Wines & Spirits
Oriental items – even when chipped or damaged
Wines & Spirits • Antiques & Collectables
Records • Vintage Hi-Fi • Music related or sporting items
Any quirky items or unique items we can write about and promote on TV



Sponsoring
the weather

Eastbourne Auctions

www.eastbourneauction.com

Auction House, Finmere Road, Eastbourne BN22 8QL



FULL Probate and House Clearance Service in Operation



SKIP HIRE MADE EASY

Skips of all sizes from
2 yard mini skips to 40
yard ro-ros



MORE THAN SKIPS

Road sweepers,
tippers and concrete
crusher for hire



**PICK
UP**

Introducing our
same-day Man and Van
service for single items
and bulky waste

**A LOAD OFF
YOUR MIND**

01323 48 88 88
PJ-WASTE.CO.UK



A special walk remembering loved ones

THE *You Raise Me Up* charity is staging *Memories at Sunset* – a special walk to remember our loved ones.

By **Peter Lindsey**

It will take place on Friday August 30th from 5:30pm until 9:00pm at *Seven Sisters Country Park*.

It will start with a stroll to the beach, the opportunity to watch the sunset, and then lighting up decorated lanterns.

These lanterns will shine as the sun sets, symbolizing the enduring light of our memories.

Adult Registration 16+ – you are required to raise a minimum of £20. This includes a paper lantern which will be posted to you four weeks prior to the event for you to decorate.

Every one registered adult includes one free entry to a child under the age of 16.

Well-behaved dogs are welcome and must be on leads.

The entire walk is just under 5km, and the event is proudly sponsored by *Stephen Rimmer LLP*.

Visit the link below to remember your loved ones.

www.youraisemeup.co.uk/events

You Raise Me Up offers emotional and mental health and support to families that have lost a young adult between the ages of 16 and 25. It has premises in Eastbourne and Polegate.



Dark Road Home

SHEILA Bugler, Eastbourne’s popular crime writer has done it again.

By **Gail McKay**

Known for her Eastbourne based crime novels featuring journalist Dee Doran she has just published her 10th novel. This time, the action has moved back to Ireland, where Sheila grew up.

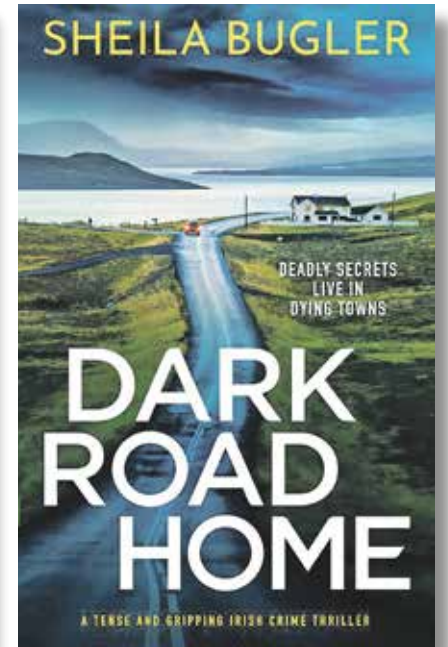
Fans will devour the latest book. “Imagine a collaboration between Anne Tyler and AM Homes.” Says Ken Bruen, fellow Irish crime noir writer.

Gripping

Dark Road Home, is a gripping crime thriller centred around Leah Ryan.

When she was a teenager, Leah’s mother was seriously injured in a car accident. The police’s prime suspect, Seamus O’Malley, was never found.

Now, nearly two decades later, Leah arrives back in Ireland seeking



answers. Seamus O’Malley’s body has recently been discovered, leading the police to believe he was not driving the car that hit Leah’s mother that night. As she prepares to return to her home town of Dungarry, tragedy strikes again when Leah’s first love, Eamon Lonergan, is found brutally murdered.

At first, the two murders appear to be unrelated. But in a small town like Dungarry, everything is connected.

All small towns have their secrets, and sometimes there’s only one way to ensure the truth stays buried.

“The plot is as intricate as it is compelling.” – Chris Curran.

Available from *Amazon, Kobo* and all good bookshops.

Paperback £9.99 | Ebook £3.99 | ISBN: 9781800327368

GAROLLA ELECTRIC GARAGE DOORS

 Checkatrade 9.8 out of 10

 Trustpilot 4.7 out of 5

FULLY FITTED
PRICES FROM
£995

UNBEATABLE VALUE
ELECTRIC GARAGE DOORS

- ✓ FREE installation
- ✓ FREE 5 year warranty
- ✓ Manufactured in the UK
- ✓ Fitted by a local Garolla engineer
- ✓ The UK’s No.1 recommended

BOOK A FREE SURVEY TODAY

01323 800 116

GAROLLA.CO.UK

Over 30 years' experience,
friendly & professional advice

Kitchen, bathroom & bedroom fitting
Doors & other second fix carpentry

Home maintenance, Alterations & Refurbishments

Mobile: 07971 104593

Free estimates, No VAT & Fully insured

Your Eastbourne BID Launches Fresh Start Eastbourne to Tackle Homelessness

Eastbourne BID has launched “Fresh Start” to address homelessness in a targeted and productive way. The initiative encourages donations to support local charities working directly with people experiencing homelessness rather than giving directly to individuals on the street.

Donation stations conveniently accept £3+ contributions via card taps. All funds raised will be collected and distributed as quarterly grants to rigorously vetted charities.

Inspired by successful models in other UK cities like Bristol, Fresh Start Eastbourne CIC aims to provide essential aid and services while combating potential exploitation. The initiative has received strong support from local leaders and charities, who believe it offers a compassionate and effective way to make a difference in the lives of people experiencing homelessness.

“We’ve seen how successful ‘Positive Giving’ models can be in other cities,” said Luke Johnson, BID Operations Manager. “We’re excited to bring this approach to Eastbourne, providing direct support to charities making a real difference in the lives of those who need it most.”



Former Eastbourne MP Stephen Lloyd fully endorses the initiative, saying, “I’ve witnessed the devastating impact of homelessness on our town. Fresh Start Eastbourne is a powerful way to empower the charities and organisations that are making a difference on the front lines.”

Make a difference today by donating at our terminal outside The Clock House on Cornfield Road.

Visit freshstarteastbourne.org to learn how your donation to Fresh Start Eastbourne can support long-term solutions and positive change for vulnerable members of our community.

Welcome Scott Kennedy to the Street Ambassador Team!

Scott Kennedy has joined the street ambassador team, working alongside Lewis Bridger to provide a town centre presence seven days a week.

Scott was employed as part of the business warden team until March when the partners’ funding was removed.

As a familiar face for many town centre businesses and knowing all the regulars, he’s sure to be a positive addition to the ambassador team.

As always, you can contact Lewis and Scott by calling or messaging 07516 927 052.



Market Success!



Thanks to the UK Shared Prosperity Fund the market is helping new enterprises take flight

The latest market trader is Indian Kitchen by Lian, who runs her Indian street food stall with the help of her daughter, Vung. After years of struggling to get started, finding much of the support inaccessible, Lian’s dream finally came true with the support of Luke Johnson and the UK Shared Prosperity market experience course:

“For Luke, nothing is a problem. He made everything so much easier. He’s excellent. We’re very happy to finally be here!”

Your Eastbourne BID, working with Edeal Enterprise Agency, also supports the Youth Market, which encourages new traders from across the region to join the market and promotes live music and cultural activities. This year’s event takes place on 1 June in Terminus Road from 10am to 4pm and has seen footfall increase by 25% in the past.

Over 90% of the regular traders at the market are based in Eastbourne, and our market includes fresh local produce and artisan crafts.

Three former market traders have even graduated to their own permanent retail spaces within the town – a fantastic achievement!

The market’s impact is clear. In the past year, their efforts have supported the launch of 22 new businesses and the creation of 27 jobs.

If you’d like to trade for free at the Youth Market on 1 June, or take part in the free UK Shared Prosperity Fund Market Experience – get in touch by emailing luke@youreastbournebid.com



Vote
YES
to the BID

**Second-Term
Ballot Consultation:
Have Your Say**

Your Eastbourne BID’s current term ends on
3rd September 2024.

Help shape the next five years!
Please take our quick survey
and tell us what improvements
matter most to you at
youreastbournebid.com



Bowls can be so good for your health

MOTCOMBE Gardens Bowls Club is situated in the historic Old Town in a pleasant small park, sheltered from the weather.

By **Graham Barnard**

The club stands on ground donated to the borough by the Duke of Devonshire, and the club opened in 1910.

It has some of the finest greens looked after by a professional team to the highest standard.

There are four rinks and there is a full season of interclub matches, both home and away.

There are also a range of internal club competitions to which all full members are invited to participate.

Social events take place from October to April as well as open days and coffee mornings in the summer season.



There is a modern well-fitted clubhouse with all the facilities that you would expect.

It has a drinks licence, and alcoholic drinks are available to all full members. Teas and coffees are available all day.

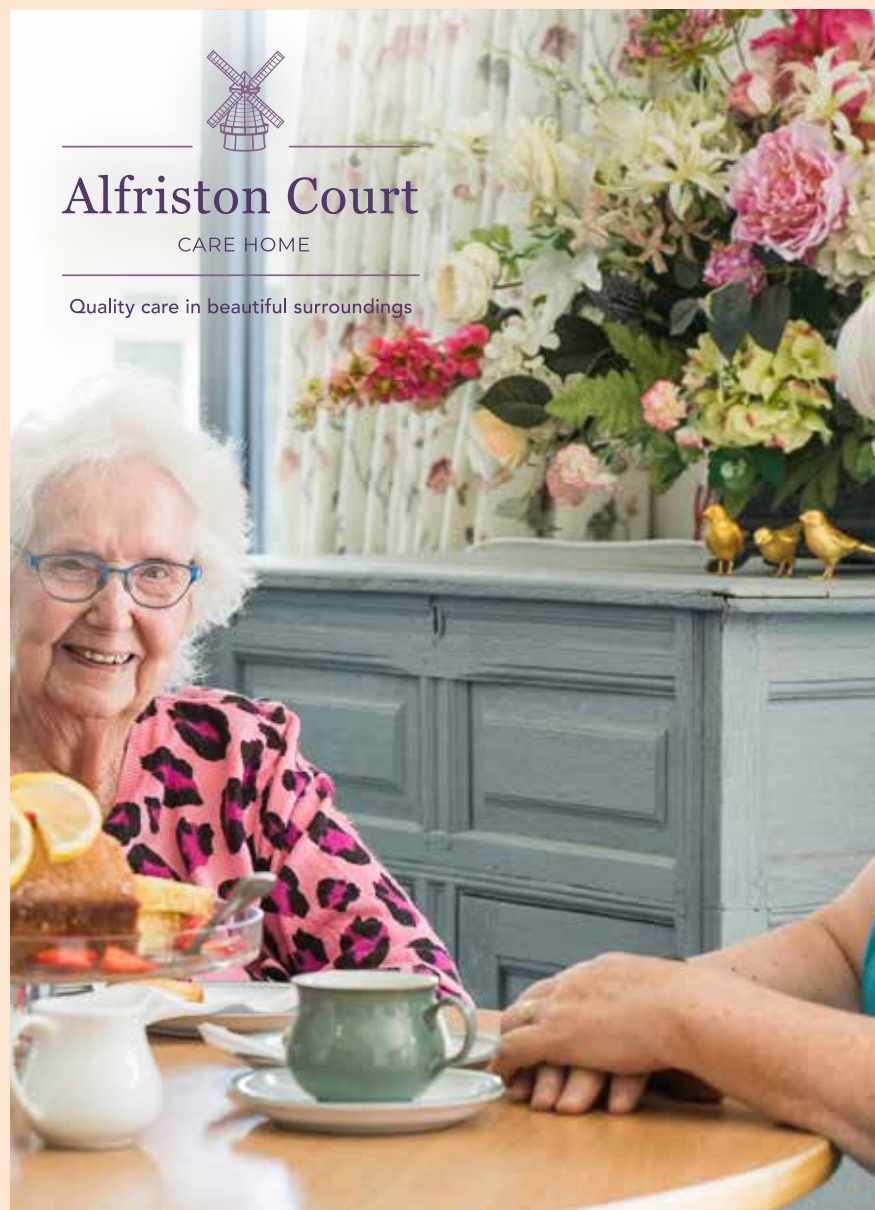
If you are a bowler or you are a beginner you will be equally welcomed. There are two licensed

coaches, and there is free initial coaching for new bowlers.

Joining fees are very competitive.

For more information please go to: motcombegardensbowlsclub.org.uk

Or call **01323 727400 / 07864 692987**



Alfriston Court

CARE HOME

Quality care in beautiful surroundings



Discover your New home from home

Alfriston Court Care Home in the historic village of Alfriston is an Edwardian Country House overlooking the South Downs National Park.

- Stunning views
- 24-hour nursing care
- Home-cooked meals
- Flexible visiting hours
- Variety of daily activities
- Rated GOOD by the CQC



Please call to arrange a tour today

01323 874140

www.alfriston-court.com

Eastbourne Youth Market is back

THE popular *Eastbourne Youth Market* will be coming back to Terminus Road on June 1st.

By **Peter Lindsey**

Once again, the event will be celebrating and showcasing the best young local traders and live musicians!

It is organised by *Eastbourne Business Improvement District*.

Chief Executive Stephen Holt said: "Please come and join us for a day full of unique stalls, live music and street food.

"It will be in Terminus Road, in the heart of Eastbourne Town Centre,



and we are confident it will be popular once again."

To secure your spot as a seller at the Eastbourne Youth Market, please reach out to Luke at:

luke@youreastbournebid.com

If you're a musician and would like to perform at the event then email:

thehiveeventstage@gmail.com

The Farmers and Street Market is held every Wednesday and Sunday from



9:30am – 4:00pm on Terminus Road (Between Barclays and Halifax).

For more information go to eastbourneboroughmarket.co.uk

Keep your cool this summer with our exciting range of fans from Igenix



4010W (white) £49.99
Our Price **£29.99**

6143B (Black) £64.99
Our Price **£44.99**



6143W (white) £64.99
Our Price **£44.99**



2016W (white) £59.99
Our Price **£34.99**

Davis
TV · HiFi · Home Appliances



Call now to see how we can help you
on **01323 733279**

34A Church Street, Old Town, Eastbourne, East Sussex BN21 1HS 01323 733279 www.davistv.co.uk
Call into our showroom located on the A259 in Old Town, Eastbourne, for a demonstration of the latest technology from all the top brands, with **FREE CAR PARKING OPPOSITE THE SHOP**



More bluebell

THE five-week *Arlington Bluebell Walk and Farm Trail* started on April 10th – and it runs until May 14th.

By **Peter Lindsey**

If you haven't yet been there, it is well worth a visit.

The bluebells have come our much earlier this year, and it is proving very popular.

Each day, a different charity provides all the catering, raising money for their individual causes.

On the very first day, *You Raise Me Up* raised more than £2,500.

Bates Green Garden – on the same site – is open every Wednesday 10am–4pm until October.

The *Bates Green Garden Cafe* – with homemade cakes and lunches – is also open every Wednesday, and the Garden entrance fee also includes entry to *Beatons Wood*, a 24 acre ancient oak and hornbeam wood.

Visitors can also walk around the six-acre Wildflower Meadow, appreciate the diversity and sit to enjoy the stunning views of the South Downs.

Go to www.bluebellwalk.co.uk and www.batesgreengarden.co.uk



Team Chatfield's very special Race for Life

TEAM Chatfield are a very special team made up of ten women who will be taking part in Eastbourne's *Race for Life* on Sunday May 26th.

By **Peter Lindsey**

Race For Life is organised by Cancer Research UK and is for women only – running 5k around Hampden Park.

Many of the runners are motivated to take part because of personal battles with cancer – and *Team Chatfield* is one just group.

Team Leader is Alex Chatfield, part of *Chatfields*, the independent jewellers in Eastbourne Town centre.

She decided to form the group as two of her friends with young families are battling cancer.

First is Georgina Hughes, aged, 42, who works in sales at *Chatfields*.

Here is her story:
"I first felt a lump in my breast last September, and in January I was diagnosed with Stage 3 breast cancer.

"Further tests discovered that I have cancer in both breasts, but they are completely separate cancers. This lead to a double-mastectomy.

"The support I have received from friends has been amazing. I may not be able to complete the *Race For Life* due to my treatment, and if I can't I will certainly be there cheering everyone on.

Libby Pickard, 19 and Kitty Pickard 16 are running after their mum Lisa was diagnosed with Stage 3 colon cancer, and Lisa is keen to raise awareness of colon and bowel cancer.

Don't leave it.

Lisa said: "My message to everyone is really simple – you know your body so don't leave it.

"In my case, it did take a while – and a lot of persistence – to get referred by my GP. I knew something wasn't right."

Lisa underwent major surgery in September last year followed by a short period of chemotherapy in December before complications stopped the treatment.

Kitty's message is also simple:

"I am doing this for my mum. I also want to raise awareness of the disease, and also improve my own fitness."

Amazing

Team Leader Alex said: "Both Georgina and Lisa are amazing people, and I live in awe of both of them.

"We are taking this very seriously, training regularly, so we can complete the 5k race. But it isn't a race, it's our way of giving that little bit back. *Cancer Research UK* does the most amazing job."

To sponsor *Team Chatfield*, please go to: <https://fundraise.cancerresearchuk.org/team/team-chatfields>



Lisa, Alex and Georgina.



Thinking of Selling or Letting?

Why not contact your local Independent agent on

01323 701702

info@gssalesandlettings.com
gssalesandlettings.com

185a Langney Road, Eastbourne
 East Sussex BN22 8AH



Est. 2012



Finding yourself buried under a pile of paperwork?

We can help you to free up your invaluable time to work on your business whilst we handle the finances.

We specialise in providing a full bookkeeping service to Sole traders, small and medium sized businesses with a personal touch, swapping dull, repetitive meetings for individualised and informal discussions

We can also provide payroll services including Auto enrolment and Self assessment Tax returns.

We can also file your CIS returns



www.eckbookkeeping.co.uk
admin@eckbookkeeping.co.uk
 01323 348 480

aat AAT Licensed Accountant



Elizabeth Pecky is licensed and regulated by AAT under license number 2000773.

Eastbourne and the South Downs – in colour

TEENAGER Toby Godfree has created *Eastbourne and the South Downs Colouring Book* second edition.

By **Peter Lindsey**

He has produced four colouring books:

- Eastbourne and the South Downs.
- Hastings and St Leonards.
- Brighton and Hove.
- and the Isle of Wight.

They are each produced on specialist paper designed just for colouring books.

The Eastbourne one costs £6.99.

To purchase, please go to:

www.tobygphotography.com



Towner Gallery



Enterprise Shopping



Seafront



Belle Tout



Birling Gap



Burrawa climb for charity

ALAN Young, 76, from Eastbourne is scared of heights...

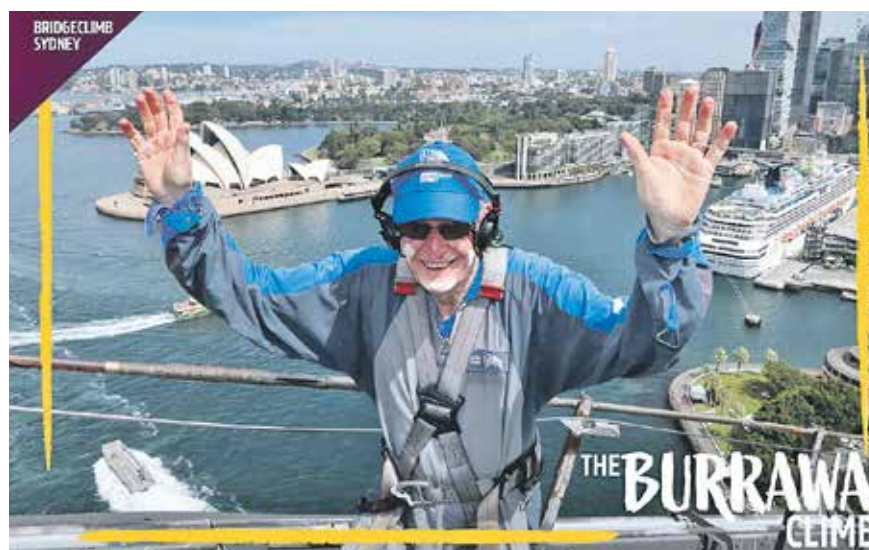
By **Peter Lindsey**

But he has conquered those fears to complete the *Burrawa Climb over the Sydney Harbour Bridge*. That's 440ft above sea level.

Alan was in Sydney with his family to meet his daughter who is on a Gap year travelling around SouthEast Asia and Australasia.

His incentive was to raise money for charity, sharing the monies raised between *Macmillan Cancer Support* and *Rotary's Polio Foundation*.

Both are close to Alan's heart. He is a volunteer car driver with *South Central Ambulance Service* taking patients to and from hospital, many of whom are going for cancer treatment.



And his grandmother suffered from Polio. Alan is a member of *Eastbourne AM Rotary Club*, and Rotary's mission is to eradicate polio.

Alan said: "It is an experience I will never forget. I am absolutely terrified of heights but I was determined to do this with my family.

"I had to seek medical approval because of my age but once I was up there it was the most amazing experience of my life.

"I'm very proud of what I have achieved – and most importantly, I am helping two very deserving charities."

Anyone can be a part of the fight to end polio and have their donation to *Rotary* matched 2-to-1 by the *Bill & Melinda Gates Foundation*.

So far, Alan has raised more than £1,100.

You can still donate – please go to www.justgiving.com/page/alan-young-1709545879977

Pier 2 Peer is back for its fourth year!

JOIN *WayfinderWoman's Pier2Peer*, run, walk and cycle Fundraising Event on 27th July 2024

By **Sarah O'Flaherty**

What is Pier2Peer?

Pier2Peer is a walk, run, and cycle event along the picturesque coastline between Eastbourne and Hastings Piers, which makes for a fun 16 mile challenge. But if that sounds a bit far for you then there is a shorter more accessible route from Eastbourne Pier to Sovereign Harbour and back.

Why Should You Participate?

- **Community Spirit:** A great opportunity to get together with friends or colleagues to support a cause that matters!

- **Inclusivity:** Bring your four-legged companions and little ones in buggies – they're all welcome!
- **Affordable Sign-Up – just £15.** Plus, your pledge to raise £25 in sponsorship – a small effort with a big impact.
- **Stylish Swag:** Want to stand out? For an additional £10 you'll receive a branded t-shirt to wear with pride.

We're grateful to our headline sponsors, **Mark Bishop Plumbing and Heating Ltd** and **Bodi Blossom**, as well as sponsors **Mayo Wynne Baxter**, for their unwavering support.

Pier2Peer is the main fundraising event in the *Wayfinder Woman*



calendar and as such is crucial for our mission to provide a unique service for women in our community who need our help.

Your involvement will help us continue to offer;

A range of courses aimed at providing women with the confidence, skills and strength to take control of their future.

Help with career guidance to get more women back to the workplace. Valuable volunteering opportunities that offer a variety of skills and experience based learning.

Our "safe space" drop in hub in the town centre.

A chance to connect with others who may have a shared journey or experience and to make a difference.

We need companies throughout Sussex to get involved and join us for this year's *Pier2 Peer*.

27th July 2024 – get it in your diary now.

Please sign up here: <https://register.enthuse.com/ps/event/ThePier2Peer2024>

Eastbourne's new care home is shaking things up!

A £21.6m, luxury care home which features a cinema, café, hair salon and its very own cocktail bar has officially opened in Eastbourne, East Sussex.

Over 150 guests, including the Mayor Councillor Candy Vaughan, were invited to experience Hallmark Willingdon Park Manor, a new, 85 bed, residential, dementia and nursing home on Kings Drive.

Local businesses and care professionals alike were encouraged to tickle their tastebuds, enjoy demonstrations from some of the home's 90 new team members and view their facilities which include nine luxurious suites, which form part of a unique retirement living

offering called The Residences.

Other features at the home include a sensory room to support residents living with dementia, an activities room with a baby grand piano, and a terrace which will be used for gardening, bird watching and socialising.

Meanwhile outside there is a summer house, gardening club area with raised planters, and a courtyard which supports alfresco dining in the warmer months.

General Manager at Hallmark Willingdon Park Manor, Ian Cole said: *"We had a fabulous time, introducing our new home to the Eastbourne community and 90*

dedicated team members, who are passionate about supporting residents to thrive in later life.

"We are excited to see what the future holds for Willingdon Park Manor and we would like to thank the local community for the incredible, warm welcome we have received to date."

The Mayor of Eastbourne, Councillor Candy Vaughan added:

"This was the first time I've been in a Hallmark home, and I thoroughly enjoyed the hospitality and the tour.

The home is going to be a wonderful community care home, the quality and space is fantastic."



The Mayor of Bath, Councillor Candy Vaughan officially opens Hallmark Willingdon Park Manor with General Manager Ian Cole (left), Founder Avnish Goyal CBE and Managing Director Aneurin Brown.

Join The Inspire Sussex Paddling Challenge!!

Inspire Sussex is on a mission to inspire and empower individuals with learning disabilities. Currently, they're raising funds for our upcoming Social Hub on Greenfield Road, Eastbourne.

To amplify their efforts, Inspire Sussex has joined forces with Buzz Active and The Eastbourne Chamber of Commerce to introduce a unique fundraising challenge. Your participation will contribute significantly to creating a space that will be a beacon of inspiration, connection, and positive change within our community. Whether you're a seasoned paddler or a beginner seeking a new adventure, this challenge is tailored to all skill levels. Beyond just reaching the 100 kilometres mark, our goal is to foster camaraderie and ignite a shared passion for an active lifestyle.

The event promises to be great fun and offers you and your colleagues the opportunity to get out

of the office and onto the river to raise money in support of a vital local charity.

What? Where? When...?

Objective: Achieve a collective paddling distance of 100 kilometres

Timings: Friday 10th May from 10:00 AM to 3:00 PM

Participants: Open to all paddle enthusiasts! Teams of two participants

Fundraising for participants: Each participant aims to raise a target of £40.00 from sponsors.

"Whether you're a seasoned paddler or a beginner seeking a new adventure, this challenge is tailored to all skill levels. Beyond just reaching the 100 kilometer mark, our goal is to foster camaraderie and ignite a shared passion for an active lifestyle"



inspire

RAISE FUNDS FOR
INSPIRE SUSSEX SOCIAL HUB
JOIN US FOR AN EXCITING FUNDRAISING

'ACTIVE INSPIRE
PADDLING CHALLENGE'

FRIDAY 10TH MAY 2024
10AM-3PM

'ACTIVE BUZZ',
SEVEN SISTERS COUNTY PARK
EXCEAT, NEAR SEAFORD
EAST SUSSEX, BN25 4AD
TEL: 01323 463300

Kayak Disability Friendly Event River

"Achieve a collective paddling distance of 100km."

REGISTER NOW

buzz eastbourne

New members for April

Friends of Willingdon Community School • BVM Properties Limited •
A Bicknell Investments • Letters in Lights • Ceremonies with Heather •
AIMS Accountants for Business • Smart Hospitality and Travel •
The ChickBox • Drop of the Ocean • The Rum Infusionist • Action Your Potential

‘Let Your Imagination And Wanderlust Run Wild’ Travelosophers By Gareth Harding Can Plan You The Perfect Holiday Adventure



Two Eastbourne Chamber members were lucky enough to travel in Cambodia and Vietnam recently, on luxury trips tailor-made by Travelosophers By Gareth Harding.

Without wanting to make anyone envious, the pictures and stories from their travels are so good, that we just had to share them with you...

Steve Christmas, of Life Planning Solutions and Steve Marshall of LED-Lighting UK both recently embarked on holidays in Southeast



Asia. Whilst both trips took in Vietnam and Cambodia, they were individually created with each client's specific wishes in mind.

As Gareth Harding explains:

"I started with an in-depth consultation to establish exactly what they wanted to experience and benefit from on their individual travels. Steve & Sue Christmas wanted to see the highlights of Vietnam and Cambodia plus some local, more unusual and immersive experiences. Steve loves photography and I tailor-made an itinerary that included door-to-door transfers, executive lounges, pre-booked airline seats and luxury, yet authentic accommodation. I organised a private guide for the first half of their trip and a very small group tour for the second".

Gareth always makes sure that his unique trips feature some 'wow' factors and some nice surprises along the way too: Steve Marshall and his group wanted to experience the countries by bike- seeing every day, real-life and learning about the

history and customs of Cambodia and Vietnam's local people.

Gareth elaborates: *"During our initial discussion, each member of the group had a slightly different wish-list experience that I then crafted into the holiday design including street food, an elephant sanctuary and a catamaran sailing trip at the end to visit some of Thailand's breath-taking islands and beaches".*

You can catch Travelosophers by Gareth Luxury, River, Small-Ship & Expedition Cruise Event at the Grand Hotel, 12th May.

To find out more about how Gareth can help you plan the perfect adventure, find him on Facebook or at www.travelosophers.com/travelosopher/gareth-harding

To find out more about Travelosophers by Gareth Harding, and to book your complimentary tickets to the Luxury, Small Ship & Expedition Cruise Event, please visit, find him on Facebook or email gareth.h@travelosophers.com

Are You Looking For Office Space?

Chamber member Pearce Marketing is moving to new offices in Eastbourne, which means that their current office suite in Hailsham is available for rent. If you're interested, get in touch with Pearce at info@pearcemarketing.co.uk

The Chamber also has office to rent in the Town Centre from July and an office space for two people in Polegate available. If you'd like to know more, simply drop an email to info@eastbournechamber.co.uk



Join today and reap the rewards!

Eastbourne unLtd Chamber of Commerce is the largest town based Chamber in the South East, so becoming a member will connect you to a large business network offering support, advice and opportunities for you and your business to grow.

Our members not only benefit from the varied events programme we offer but membership also enables them to submit an editorial for inclusion in this publication. This offer is free exclusively for our Members.

Annual membership starts from as little as £59+v at per year – Join today, it's a complete no brainer!



Mayor Leslie Mason opens expansion of Shades into next door unit in 1993.



Original single unit in Arndale Centre.

Shades' Colin Taylor – still going strong after 40 years

HE'S probably one of the best known people in Eastbourne – and Colin Taylor is celebrating 40 years in business.

By **Peter Lindsey**

Colin, now aged 84, is probably best known for bringing Shades restaurant and cafe to town. That was back in the 1980s and 40 years on, he's still going strong.

Yes, he's seen a lot of changes in that time but he still loves Eastbourne dearly.

When it all began

Colin recalls how his working life started in the police force but he was able to retire after 25 years service – and that's when it all began.

He said: "I worked in Eastbourne for nine years from 1974 during my career with Sussex Police. I investigated some of the big crimes in my day, including murders and armed robberies.

"I was Head of CID, and within two years we had the highest detection rate in the county.

"When I had the opportunity to retire at a relatively early age in March 1984, I thought to myself 'what am I going to do?'

"And that's when Shades in Bolton Road first opened. It had been derelict for 18 months.

"I had no catering experience but relished the challenge. It was one of the best decisions I ever made.

"Within days of opening, we were full up – word spread very quickly. I can remember having to operate the tills myself because we had set up and opened so quickly."

It became a self-service restaurant during the day and waitress-service restaurant after 6pm.

Expanding

Four years later and Shades had become incredibly popular so Colin expanded. He opened another restaurant in Grove Road and called it *Shades Too*.

Soon after he also took over the *Holywell Tea Cafe* on Eastbourne Seafront, and catering at the *Sovereign Centre*.

But the big move was still to come. The icing on the cake came in 1991 when Colin opened *Shades Bistro* in the Central square of the *Arndale Centre*.

Both restaurants were proving very popular but in 1997 he decided to sell the Bolton Road restaurant to spend more time with his family and concentrate on the *Arndale* unit.

By this time, he had bought the freehold of the premises and granted a 25-year lease to *Zizzi Restaurants* in 2006.

After Covid, *Zizzi* closed owing Colin £208,000. In May 2021, Colin's daughter Michelle opened *Flames* restaurant there.

But she decided to close it in August 2022 when she became pregnant with her first child.

All change

Colin then agreed to take a lease and open *Taylor's Restaurant and Sports Bar* in the new upstairs at *The Beacon*.

"This was the biggest mistake of my career. Footfall was low and the area was like a graveyard. It really was that bad."

In February 2023, Colin sold *Shades* in *The Beacon*. He has now transferred the restaurant and sports bar into Bolton Road.

Colin said: "Like for so many, the Pandemic changed everything. My son Mark now runs *Taylor's* at 3 and 5 Bolton Road.

"It's doing well, it's a restaurant with screens all around to watch your favourite sporting events. It's a restaurant with a sports bar, and on an American theme.

"The family ethos is so important to me, and I'm delighted that my family are still involved in its running.

"Family has always been so key to me, and I've enjoyed such great support over the years."

Lifetime achievement

One of the highlights of his career was receiving a *Lifetime Achievement Award* at the 2018 *Eastbourne Business Awards*.

Colin loves Eastbourne – he always will – but the state of the Town Centre does make him feel somewhat disappointed at times.

"It's not the town that I came into all those years ago, it's so sad to see the beggars and being in some of the back streets can, at times, be concerning.

"I worry about the cost of parking – the Town Centre isn't what it was like years ago. But remember Eastbourne remains such a great, great place."

40 years

A Celebration Evening was recently held at *Taylor's* to mark the 40 years. Colin was surrounded by family and friends – something he treasures on a daily basis.

Taylor's Sports Bar and Restaurant is an American inspired venue.

Taylor's

3 & 5 Bolton Road, Eastbourne
01323 731119

info@taylor'srestaurantandsportsbar.co.uk

Best of Eastbourne



Photo: Modify Media.

**It's Carnival time in Eastbourne!!!
Saturday, 25th May 2024.**



Upgrade to Full Fibre Broadband
www.LightningFibre.co.uk



EAST SUSSEX COLLEGE

Under the Spotlight.

East Sussex College is home to a wide variety of courses with the aim of helping those in the local area thrive in their chosen industry.

Whether your ambition is to go to university, you're inspired to start an Apprenticeship, or you're motivated to retrain in pursuit of your dream career - East Sussex College is the place where you can do that.

There are a wide range of reasons why you should consider studying at East Sussex College. The College is constantly evolving and improving courses to provide you with new exciting experiences, the opportunity to develop new skills, and gain valuable qualifications.



London's Energy Savings Awards

Helping Eastbourne be the best: ESC's Award-Winning Training Hub.

In a ceremony at London's Energy Savings Awards, East Sussex College received a highly commended award in the Education Project of the Year category. This recognition highlights the College's outstanding efforts in implementing innovative and sustainable energy solutions within its educational facilities, providing the resources to support a more sustainable future.

Chosen as one of five decarbonisation academies across Sussex, the Hub plays a pivotal role in developing skills in retrofitting and green energy installation.

Serving as a resource hub for Local Authorities, construction employers, homeowners, and businesses, the ESC Training Hub facilitates the improvement of insulation and installation of green energy products in commercial properties and housing. This accolade further underscores ESC's commitment to sustainability, fostering a greener future for all.

Donna Harfield, Vice Principal at ESC, said, "It was great to attend The Energy Savings Awards to celebrate all that has been achieved at the East Sussex College Green Training Hub in partnership with OHM Energy."

"Winning the highly commended award recognises all the work that has gone into our innovative centre!"

**GREENER
FUTURE
FOR ALL.** 



Scan the QR code to read more on this story.



ESC Introduces State-of-the-Art Anatomage Table.

ESC continues to blaze trails in education with the introduction of the state-of-the-art Anatomage Table. This cutting-edge technology promises to revolutionise the way students learn about human anatomy and medical sciences.



Anatomage Table

The Anatomage Table offers an immersive and interactive experience, allowing students to explore the human body in unprecedented detail. From studying intricate structures to simulating medical procedures, this advanced tool provides a hands-on learning experience like never before.

Designed to mimic a real human cadaver, the Anatomage Table enables students to visualise anatomy in 3D, dissect virtual bodies, and delve deep into the complexities of the human form.

Donna Harfield, Vice Principal of ESC, explained, "The introduction of the Anatomage Table marks a pivotal moment in our journey towards further developing our provision and advancing digital innovation."

"This technology empowers our students to develop a deeper understanding of the human body and its complexities.

It will be critical in many sectors we teach."



Scan the QR code to read more on this story.

From East Sussex College to Sailing the World.

ESC alumna, Ella Hebron, is currently sailing the world with the 'Ha Long Bay' team for The Round the World Clipper Race 2023/24. Ella, who studied Sport & Exercise Science at ESC's Eastbourne campus until 2022, embarked on this journey following her passion for sailing.

Speaking about her involvement in the Clipper Race, Ella highlighted the multifaceted nature of ocean racing. Despite the extreme conditions and relentless sailing, Ella expressed her dedication to pushing the boat to victory.

"Becoming a professional racer is hard for anyone, particularly as a young woman," said Ella.

"I knew that Clipper Ventures is a company with a reputation for being supportive of young sailors so I felt working for them could be a safe haven. I enjoy coaching others and being one of the professionals on an amateur race has allowed me to develop these skills."



Ella Hebron Sailing

Ella's sailing journey began after her college years when she worked with the commissioning team at Oyster Yachts. Her experience extended to sailing across the Atlantic to Antigua and undergoing additional training in yachtmaster offshore, diesel engine, and medical care.



Scan the QR code to read more on this story.

Eastbourne Tunes in to Youth Viewpoint.

Art and Design students from Eastbourne are making waves with their creative manifesto, calling for safe meeting places and vibrant street art in the town. Collaborating with Towner and Eastbourne Alive, these students expressed their values through placards and interventions at the Towner gallery, showcasing their vision for a more inclusive and vibrant Eastbourne.

The students then took their ideas to Eastbourne Borough Council, urging for greater accessibility, inclusivity, safety, transport options, creativity, and wellbeing initiatives. Their efforts culminated in a motion presented at a recent council meeting aiming to amplify youth voices and address their concerns.



The council emphasised that this motion signifies a significant step forward in Eastbourne's dedication to fostering an inclusive and participatory environment, ensuring that the voices of young people are heard and valued in shaping the town's future.

Councillor Williams said: *"I would like to thank the young people for their thoughtful approach. They brought considered insight into what it is like to be a young person in Eastbourne and in them I saw our leaders of tomorrow."*



Design detail built to inspire

TQ DESIGN & BUILD is a full-service home renovation company, unique in our ability to do it all under one roof. Our construction team, and trade specialists all work in-house to bring a holistic approach to the design-build process.

We deliver the unbeatable, high-end quality of home design done right, from idea to finished product and every step in between.

The case study here is a perfect example of a successful project carried out to our client's brief.

Our client recently acquired a property located on the picturesque south coast in Eastbourne. They were eager to transform this tired property into a modern, comfortable space that caters to their family's needs. With a focus on creating an open, light-filled living environment, the client was seeking to incorporate contemporary features while retaining a cosy atmosphere.

Project objectives

The primary objective was to undertake a comprehensive renovation of the property,

By **Ben Hanny**, TQ Design & Build

breathing new life into every aspect of the space.

The client desired an open-plan layout that would foster a true sense of connectivity and spaciousness, perfect for family gatherings and entertaining.

Key considerations and project features

To fulfil the client's desire for an open living space, the design focuses on removing barriers and maximising flow between different areas of the property. This creates a seamless transition between

the kitchen, dining area, and living room, fostering a sense of connectivity and spaciousness.

Recognising the importance of abundant natural light in enhancing the ambiance of the space, the design incorporates large windows. This not only brightens the space but also creates a connection to the outdoors.

Modern features

The renovation integrates modern amenities and technologies seamlessly into the design, ensuring that the property meets the demands of contemporary living. This includes kitchen appliances, energy-efficient lighting solutions, and smart home systems that enhance convenience and comfort for the occupants.

Personalised themes and stand-out features

In line with the client's desire to express their personalities through





Bespoke wardrobes with integrated shelving and tv.

“

Craftsmanship, resulting in a renovation that exceeds expectations and enhances the client’s everyday experience of home.

the design, the renovation incorporates bespoke elements and unique features that reflect the family’s tastes and preferences.

Custom-built media wall, furniture, artwork, feature wall panelling and wallpaper design details, each element is carefully selected to add character and individuality to the space.

Cosy atmosphere

Despite the modernity of the design, creating a cosy atmosphere remains a priority. This is achieved through the use of warm, inviting materials such as natural wood, plush textiles, and tactile finishes that evoke a sense of comfort and

relaxation. Thoughtfully designed nooks and seating areas further enhance the cosiness of the space, providing intimate settings for relaxation and socialising.

Value to clients and end-users

By addressing the client’s brief and incorporating their preferences into every aspect of the design, the renovation delivers a home that not only meets their functional needs but also resonates with their emotional aspirations. The seamless integration of modern features with personalised touches creates a space that is both practical and inspiring, enhancing the quality of life for the client and their family.



Open plan kitchen with sociable aspect for family and friends.



Moreover, the engagement of local contractors not only supports the community but also ensures a collaborative approach to the project, resulting in a renovation that is truly tailored to the unique context of Eastbourne.

Overall, the design fulfils its purpose by providing a modern, inviting living environment that encapsulates the essence of coastal living while reflecting the individuality and lifestyle of the client. It represents

Bespoke media wall with built in lighting and storage space.

a successful collaboration between design expertise, client vision, and local craftsmanship, resulting in a renovation that exceeds expectations and enhances the client’s everyday experience of home.



TQ DESIGN & BUILD
DESIGNED WITH DETAIL. BUILT TO INSPIRE.

07704 096556
 @ [t.q.designbuild](https://www.instagram.com/t.q.designbuild)
info@tqdesign-build.co.uk
www.tqdesign-build.co.uk

BRUFORDS

— SINCE 1886 —

LUXURY WATCHES • DIAMOND JEWELLERY • PRE-OWNED • AFTERSALES

Your Complete Jewellers

As a family-run, independent jewellers in Eastbourne since 1886, at Brufords we pride ourselves on our reputation for exceptional service, exclusive choice, and attention to detail.

Our store situated in The Beacon shopping centre is home to our dedicated **ROLEX** in-store showroom, alongside luxury Swiss watch brands including **Breitling, Longines, TAG Heuer, TUDOR and Tissot**. In-store at The Beacon, you'll also find our **diamond and fine jewellery collections, pre-owned selection and lifestyle brands** including **Gucci and Swarovski**.



An Array of Aftersales Services

At Brufords, we understand the sentimental value that your watches and jewellery hold, so when your much loved pieces are in need of a little bit of TLC, visit us in-store to discover how we can help restore them to their former glory. Our comprehensive range of aftersales services includes **ring re-sizing, bracelet and chain alterations, watch battery replacement and full servicing**, to name but a few, and our team of dedicated aftersales experts are always happy to answer any questions you may have.



Our Exclusive Bridal Boutique

Committed to providing our customers with the very best when it comes to choosing jewellery for life's special moments and beyond, in 2023 we opened our **bespoke in-store bridal boutique** in partnership with British jewellery brand **Brown & Newirth®**.

Home to our exquisite selection of **engagement, wedding and eternity rings** plus our bridal jewellery collection, each piece in our showroom is hand-picked by our team of jewellery specialists to suit every preference, lifestyle and price point. You can also make one of life's precious moments even more memorable with our "Bridal by Appointment" service. Offered exclusively in-store, you can enjoy a glass of Champagne whilst one of our experts helps you to choose the jewellery you'll wear for a lifetime.



BRUFORDS.COM



ENQUIRIES@BRUFORDS.COM



01323 725452

Our New Flagship Store

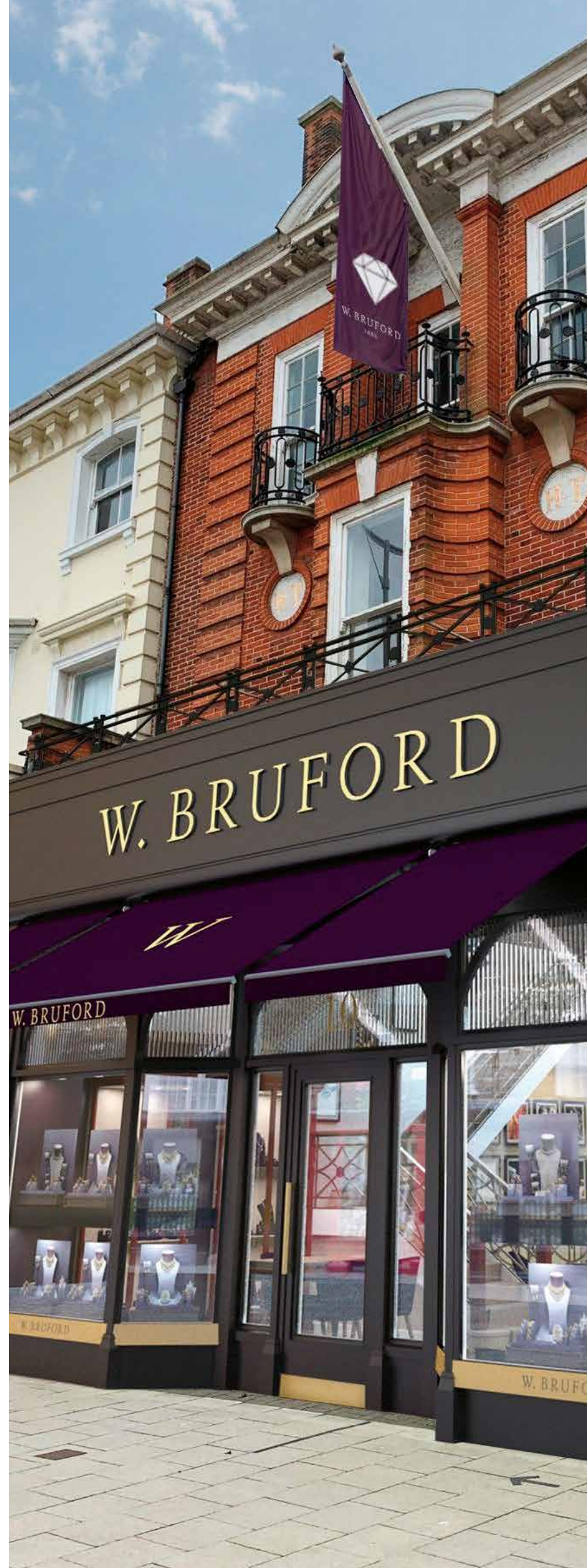
Set to open in Summer 2024, our exciting new premises at No.10 Cornfield Road will be home to a second bridal boutique - complete with Champagne bar - **jewellery showroom and aftersales centre**. On opening, the building-which dates back to 1913 when John Sainsbury first opened the store will have undergone major renovations both in-keeping with its original features and updating its design to fit the needs of the contemporary customer.



A State-of-the-Art, On-Site Watch Workshop


We are also extremely proud of our **in-house, state-of-the-art watch workshop**, which allows us to offer customers the very best in luxury watch maintenance.

Situated at our Cornfield Road head office, the workshop has been designed to reflect the exacting standards of excellence you'd expect from us here at Brufords, and our team of watchmakers and technicians has been carefully selected for their uncompromising professionalism and expertise. Having achieved **accreditation** status from **several major Swiss watch brands**, this recognition now allows full access to genuine parts and materials, ensuring that all types of servicing operation can be entrusted to us.





Mayo Wynne Baxter
Solicitors



Proudly serving the people of Eastbourne

Certified



Corporation

Call us on 01323 730543

Offices across the South East

★ Trustpilot



Lexcel
Legal Practice Quality Mark
Law Society Accredited

INVESTORS IN PEOPLE
We invest in people Silver

www.mayowynnebaxter.co.uk



Upfields attention to detail

COME into our showroom and see for yourself exactly what we have to offer.

By **Peter Lindsey**

That is the message from Grant Everitt, who bought Upfields Kitchens, Bathrooms and Bedrooms last May.

The showroom is at 73–75 South Street.

Grant – who moved from Oxford to take over the business – said: “We want to encourage people to come in our showroom and see exactly we have to offer.

“The shop has been completely redesigned, and what we offer is contemporary, cutting edge and very high quality. Many of the products we sell are unique.

“I have extensive experience in the industry, having worked in places such as London, Singapore and Moscow. I source high end kitchens and bathrooms, and it’s an international approach.

“Our bathrooms and showers have top quality designs and features, and our fitting team is just amazing.

“I source our bedrooms from top, top manufacturers, including the most amazing built-in wardrobes.

“I personally project manage the customer experience from day one. I am the one person you will talk to, and I ensure the real attention to detail.”

For Grant, what he delivers is:

- A top and unique service
- The very best products
- and top quality design.

He said: “Come and meet me, we offer free designs, we use the

most amazing software, and I firmly believe we are really special.

“You will not be disappointed.

“I look forward to welcoming you to our showroom in South Street.”

**73–75 South Street
Eastbourne BN21 4LR
01323 640252
07564 056911
info@upfields.co.uk**





Interested in Private Healthcare or do you have a policy you would like to review or compare?

Based in Eastbourne, your local specialist Private Medical Insurance Broker, helping individuals, families and companies with their employee benefits.

Our specialist independent service is provided to you free of charge, which also includes a complimentary claims support service.

Contact us today for your free tailored Private Medical Insurance quotation:

01323 301270

info@victoriahm.co.uk

Make an enquiry via our website www.victoriahm.co.uk

Victoria Healthcare Management is an appointed representative of Jade Mortgage Services Ltd who is authorised and regulated by the Financial Conduct Authority. FRN 303414



Make sure you visit the amazing Princes Mini Golf

The 18-hole landscaped mini golf course is now open daily!

Bring your family and friends along to enjoy a day filled with laughter, friendly competition, and sunshine!

And while you're here, don't forget to check out our clubhouse for some delicious refreshments to keep you energized throughout your game.

There are hot and cold snacks as well as drinks.

You can't beat Eastbourne on a sunny day!



PRINCES
MINI GOLF & CLUBHOUSE



Princes Mini Golf, Princes Park Royal Parade, Eastbourne BN22 7LQ
www.minigolfeastbourne.co.uk 01323 360006

Best local art gallery

LOOK no further than *The Lighthouse Gallery* on Cornfield Terrace for affordable, local art.

By **Claire Graves**

Offering work by some of the very best local artists and makers, you'll find this gorgeous gallery is filled to the brim with colour and inspiration.

Hub for local artists

Since opening its doors almost three years ago, *The Lighthouse* has become a hub for local artists and has a loyal following of customers who come to enjoy the

fabulous coffee, home made soup, sandwiches and cakes – then find themselves tempted by the ever-changing art and gifts on offer.

Warm welcome

Owners Caroline and Tim have created a warm, welcoming space for people to relax and enjoy an escape from the hustle and bustle of everyday life, an outlet for local artists to showcase their talents and



promote their work, and a great place to find affordable gifts or a new piece for your home.

New arrivals daily

With paintings, prints, ceramics, silver jewellery, textiles, turned wood and much more to choose from, plus new arrivals daily, come and support your local, independent art gallery and the 25 local artists that they represent.

The gallery is open from 10am–4pm, Tuesday to Saturday.

Follow them on *Instagram* and *Facebook* for details of workshops, demonstrations and events.

f The-Lighthouse-Gallery
@ lighthousegalleryeastbourne
www.thelighthousegallery.co.uk

The Lighthouse Gallery
 19 Cornfield Terrace
 Eastbourne BN21 4NS

07748 354879



Spring into Students of the Game

... to experience our vibrant collection of football shirts, sports memorabilia and our exclusive framed Subbuteo.

By **Joe Walton**

It's incredible to think that we are approaching one year of our sports shop at 3 South Street.

In that time we've seen just about every type of weather the Sunshine Coast has to throw at us from blazing sunshine to Storm Ciarán and the wettest January on record.

There is no doubt that the spring is the most uplifting time of year as

the weather begins to improve and tourists start to return.

It has been great to welcome both new and familiar faces to our shop since the start of spring, from local visitors to those coming from afar.

We've been working hard to match the sunshine with colour and brighten up the gloomier days with our unique collection of sports gifts and memorabilia.

Step into our shop tucked away at the Town Hall end of South



Street and you'll find vintage kids and adults football shirts from teams around the world, our hugely popular pieces of Framed Subbuteo, football programmes and tickets dating back to the 1930s, sporting artwork and locally produced hats, scarves and belts.

Whether you are local or visiting Eastbourne over the summer we very much look forward to welcoming you to find something special.



3 South Street
 Eastbourne BN21 4UJ
www.studentsofthegame.co.uk



LASHINGS WORLD

WITH
SAQLAIN MUSHTAQ
SIR GORDON GREENIDGE
RYAN SIDEBOTTOM
AND MANY MORE
CRICKET LEGENDS!

JOIN OUR 2024 CRICKET DAY!

2ND JUNE
2024

WITH THE WORLD-RENOWNED
LASHINGS WORLD XI

MATCHDAY SCHEDULE

- 11:00 JUNIOR COACHING
- 12:00 PRE-LUNCH DRINKS RECEPTION ON COLLEGE FIELD
- 12:30 CALL FOR LUNCH
- 15:15 AUCTION
- 16:00 T20 MATCH
- 19:30 CLOSING PRESENTATION

VIP Table - £850

Table of 9 & Henry Blofeld as your guest
Pre-lunch drink
3 course lunch
4 bottles of wine
VIP area

Gold Package - £675

Table of 9 & a Lashings player as your guest
Pre-lunch drink
3 course lunch
4 bottles of wine
Area to watch the match

Silver Package - £550

Table of 10
Pre lunch drink
3 course lunch
Area to watch the match



Tickets on sale now from www.eastbourniansociety.org/event/lashings24
Eastbourne College, Old Wish Road, Eastbourne, BN21 4JY



The Old Oak – a pub for all seasons

IF you were to close your eyes and think of the quintessential English country pub, a picture of the *Old Oak Inn* would emerge.

By **Gail McKay**

You would imagine a gorgeous 18th century building (it was built in 1733) with oak beams and inglenook fireplaces; a glorious beer garden with distant views of rolling countryside; birdsong; the clatter of passing horses; frothing Sussex ales, brilliant wines; hearty but scrumptious pub food; the chatter and laughter of satisfied customers... the *Old Oak* has all of this and more.

Situated in the historic village of Arlington near Polegate, the *Old Oak* really is a pub for all seasons. It is within an acorn's drop of the beautiful *Abbots Wood*, which are teeming with wildlife and at this time of year a stunning carpet of bluebells as far as the eye can see. It is then, the ideal watering hole for dog walkers, ramblers, cyclists and horse riders alike – for whom a warm welcome awaits. Its south facing sheltered garden and sun terrace offer sumptuous views across the *Cuckmere Valley* to the *South Downs* and is the ideal place to while away a few hours with a cold beer or chilled glass of rose. The sunsets here are spectacular.

Fast forward to the winter months and the Oak offers roaring log fires, cosy oak beams and traditional board games.

Since we last featured the pub and its new owners in 2021, as the world emerged from lockdown, the *Old Oak* has gone from strength to strength. A coveted best pub in Sussex award last year reflects the effort that has gone in to make this lovely pub a true destination venue. Superb but chilled jazz is available every other Sunday and other brilliant local musicians perform in the new pergola in the garden throughout the summer months. It has held beer and cider festivals, themed wine pairing dinners, it hosts a monthly charity quiz, games nights and is putting together its first 'toad in the hole' team.

It boasts regular five star reviews and glowing comments on the main review sites. The Sunday roasts are often sold out by mid-afternoon such is their popularity. The weekend starts early at the *Old Oak* and people flock to the pub every Friday for Burger Night (£10 for a burger and chips) creating a really lovely vibe. Weekend breakfasts

from 10am (perhaps combined with an early walk in the woods) are also proving extremely popular.

Landlady, Kate Maynard said that "We have been really lucky in being able to retain our key kitchen and bar staff over the last three years – which is quite unusual in hospitality. This has, enabled us to maintain consistently high standards, so the customers know that they will get great food and friendly service each time they come."

In short, when so many pubs are struggling, the *Old Oak* is a remarkable success story. But don't take our word for it – go along and see what all the fuss is about for yourself.



**Caneheath, Arlington,
East Sussex BN26 6SJ**

**01323 482072
info@oldoakinnarlington.co.uk
www.oldoakinnarlington.co.uk**

Become a Rooted Legend

AN ambitious food-growing project is aiming to produce 10,000 nourishing portions of fresh food for Eastbourne.

By **Gail McKay**

Rooted, based at the Gorringe Road allotments, is hoping to recruit home growers who will receive free seeds and seedlings to help the effort.

Co-ordinator Sally Lee wants to attract both keen gardeners and those starting out as growers who could donate any surplus produce to the target.

Last year, *Rooted* grew and gathered a total of 1.7 tonnes of fresh fruit and vegetables for community fridges across Eastbourne.

This year, the 30-plus volunteers have set a target of growing and collecting four tonnes of locally cultivated fresh produce, which equates to about 10,000 portions of fruit and veg.

People can pick up the seeds and seedlings from the Gorringe Road site and *Rooted* will offer support and advice.



Seed trays and covers can be bought from *Rooted* at a discounted price, but any recycled pots and containers can be used to cultivate seeds and seedlings.

The *Rooted* project has a community plot in Gorringe Road polytunnel, greenhouse, summerhouse and apple trees on one plot and a separate children's plot with a large polytunnel for hands-on activities.

The gardeners produce herbs, soft fruit and vegetables using 'no dig' organic cultivation methods. The volunteers also meet for regular

open-air events at the plot to socialise and for wellbeing.

The aim is to create a vibrant and sustainable Eastbourne food economy with community-involvement at its centre.

Rooted is also working with the Eastbourne Food Partnership, a network of organisations, individuals and local councillors.

To find out more about becoming a *Rooted Legend* join the Legend mailing list <http://eepurl.com/iDHZLM> or email Sally at rootedcommunityfood@gmail.com

EHC Eastbourne Hearing Centre

For quality of life,
get quality hearing
advice from our
expert audiologist Keith

Call us on **01323 360 281**
to book your appointment today



One of the UK's oldest hearing centres | Hospital grade equipment in bespoke clinical rooms

108 South Street, Eastbourne, East Sussex, BN21 4LZ eastbournehearingcentre.co.uk f

Health & Wellbeing



your brand need revitalising?

CONTACT CUSTARD

custard

DESIGN MARKETING PRINT

01323 430303 instant@custard-design.co.uk

Volunteering is good for you

AGE UK East Sussex appealing for volunteers to support people in later life.

By **Graham Barnard**

Age UK East Sussex, a charity dedicated to supporting older people in the East Sussex area, is calling for volunteers to join their team and make a difference in the community.

The charity, which provides vital services and resources to help older people maintain their independence and quality of life, is seeking

individuals with a passion for helping others and a desire to contribute to their local community.

Volunteers are the backbone

“Our Volunteers are the backbone of our charity and we could not continue our great work without them. Last year, our volunteers’ contribution of their time and talents enabled us to support over 10,000 old people across the County, but we need more. We are therefore reaching out to individuals who are willing to lend a helping hand and make a



positive impact in the lives of older people in our community,” said Steve Hare, CEO at Age UK East Sussex. “Whether it’s offering a friendly phone call, taking someone to an appointment, running a craft class or helping in our shops, there’s so much you can do volunteering with us.”

Volunteering opportunities

Volunteer opportunities with Age UK East Sussex are flexible and varied, allowing individuals to choose roles that best fit their interests, skills, and availability. Whether you have a few hours to spare each week or can commit to a more regular schedule,

there are opportunities available to suit your preferences.

“We welcome compassionate individuals from all walks of life to join our team and help us continue our mission of supporting older people to live fulfilling and independent lives,” added Steve Hare.

To learn more about volunteering opportunities with Age UK East Sussex or to apply to become a volunteer, please visit

www.ageukeastsussex.org, call **01273 476704** or contact volunteers@ageukeastsussex.org.uk

Garden Furniture & Tools Needed



Your donations help to create smiles in East Sussex

Think twice before throwing out your unwanted garden furniture and gardening tools! We will collect them free of charge* and sell them in our Store to help fund vital services supporting people in East Sussex.

*Only large items such as furniture and lawnmowers, which are suitable for re-sale and located within a 20 mile radius of our Store, are eligible for free collection.

Age UK East Sussex Furniture Warehouse & Store



16B Maple Road, Eastbourne BN23 6NY

T: 01323 403111

E: eastbourne@ageukeastsussex.org.uk

www.ageukeastsussex.org.uk



Age UK East Sussex, 54 Cliffe High Street, Lewes, East Sussex BN7 2AN. Registered charity number 1139470. Company number 07216053. VAT Registration number 210 694 234.



Celebrity-spotting whilst rambling

ALWAYS make sure you look your best when rambling, just in case you bump into your hero celebrity.

By **Lindsey Gwynne**

As I was coming out of the excellent *Hikers' Rest* in East Dean, looking my absolute best as you can see, there he was, local National Trinket, Rev (Retired) Richard Coles.

I apologised for accosting him and he graciously allowed me to engage him in conversation for a couple of minutes. Hopefully I wasn't too blathering. We talked dogs and bad backs and long walks. Then he wished me a good day, and I him, and we parted, he to escape to the privacy of his nearby home, no doubt, and me to rejoin my walking buddies whereupon I school-girlishly asked "did you see that?!!!" Of course they hadn't.

They did, naturally, boast of the time they had seen Grayson Perry whilst out walking. Lord & Lady Shawcross from *Friston Manor*, may be spied locally, along with her daughter Alex Polizzi; the Hotel Inspector. Famous tennis umpire Gerry Armstrong lives in these parts, as does actress Gina McKee, although it's rumoured she's moved to Hastings. And, of course, there is our very own David Dimbleby of Folkington who is spotted from time to time.

A couple of years ago the *Polegate Ramblers* were out enjoying the views when they encountered the Naked Ramblers! Naked, that is, apart from the stout boots and rucksacks which identified them as ramblers. Leader John asked if he could take a photo of them. "Only if you get your kit off too!" replied their leader!

As we followed the Cuckmere we came across a nice young man with a very long monocular on a tripod, looking out at a flock of birds in the distance. "You wouldn't happen to be a famous ornithologist would you?" we asked. "Yes, I'm Chris Packham!" he kidded us. We looked at the birds through his device, but could not find Wally.

Anyway, I was already walking with celebrities – Eastbourne's Walking Champion & former Mayor, and the Joint Chair of the *East Sussex Federation of the WI*! Esteemed company indeed!

Polegate Ramblers meet every Thursday for a choice of a 2-ish mile, 5-ish mile or 10-ish mile walk. Rambles are led by experienced members in the local area. New walkers can come from any of the nearby towns or villages and are always welcome. Email polegateramblers@gmail.com



Cosyfeet
extra roomy



Clearwell mobility 
Making Life Easier

Our Eastbourne showroom is our Cosyfeet hub, with friendly staff that can help you find the right style of slipper, boot and sandal for any occasion.

"Cosyfeet are specially designed to fit and flatter swollen feet."

All styles have the same extra roomy width fitting (6E for women and 3H for men) and can be adjusted to fit a range of swelling.



Wheeled Walkers
From **£89.99***



Stairlifts From
£1,790*



Riser Recliners
From **£699***

*Prices quoted exclude VAT & are available to customers with a long term medical condition.



Visit your local showroom today!

336/338 Seaside,
Eastbourne,
BN22 7RJ

Mon-Sat 9-5PM

01323 484 060

www.clearwellmobility.co.uk



Join us for
our next
event

**Bowes House care home,
Hailsham**

**Dementia friendly
services information**

**Wednesday 15th May
12 noon - 2pm**

Join us for a free networking lunch as part of National Dementia Action Week. You will have the opportunity to engage with local dementia friendly services and businesses, who will be showcasing the services they offer, and providing information on the support available. For this event we will be serving a complimentary buffet lunch.

Trusted to care.



To book please call
01323 917176 or email
karen.milligan@careuk.com

care UK

Advertising Feature



Experience quality dementia care, led by experts

At Care UK's Bowes House care home in Hailsham, our team is passionate about supporting your loved one to maintain independence and make choices, whilst receiving the very best dementia care in a place they can call home.

Care you can trust

We work with academic partners and respected leaders in the field, to ensure we stay up to date with the latest approaches to dementia care. We have worked closely with the Association of Dementia Studies to create bespoke programmes of dementia training. Whilst Dr Nori Graham - a renowned dementia expert and Vice President of Alzheimer's International - supports the development of our dementia strategy with Suzanne Mumford, a Queen's Nurse and Head of Nursing, Care and Dementia at Care UK.

Living well with dementia

Our dedicated team will work with you and your loved one to deliver a care and lifestyle plan entirely tailored to their unique needs and preferences and our busy activities schedule is always

packed with meaningful activities that support them to live life to the full.

Purpose-built facilities

At our purpose-built home, everything from colour schemes, signage, and furniture to the design of our crockery, has been carefully chosen to support residents living with dementia to be as independent as possible.

Each floor at Bowes House is divided into smaller suites that create a calm atmosphere, keeping hustle and bustle to a minimum.

Bowes House care home in Hailsham is part of Care UK, the country's most awarded large care provider. We've been delivering high-quality, person-centred care for over 40 years. That's why over 8,000 families trust us to care for their older loved ones.



To find out more about Bowes House, call **01323 917176** or scan the QR code.



Bowes House
25 Battle Road, Hailsham BN27 1DU
careuk.com/bowes-house

care UK 



EASTBOURNE GARDENS CARE HOME

A Relaxing Retreat for All

At Eastbourne Gardens, we understand the importance of ensuring your loved one is well taken care of while you're away. Our dedicated team offers a seamless and joyful transition for new residents, providing unparalleled standards of residential, nursing, dementia and respite care. Whether you're seeking a short respite or a longer stay, trust us to provide a nurturing environment where your loved one can thrive whilst you take a well-deserved break.

Enjoy 16 days for the price of 14 when you stay during May or June 2024.*

 01323 342697 averyhealthcare.co.uk

6 Upper Kings Drive | Eastbourne | East Sussex | BN20 9AN

*T&Cs apply. Please visit averyhealthcare.co.uk/ouroffers for more details.



The Arts

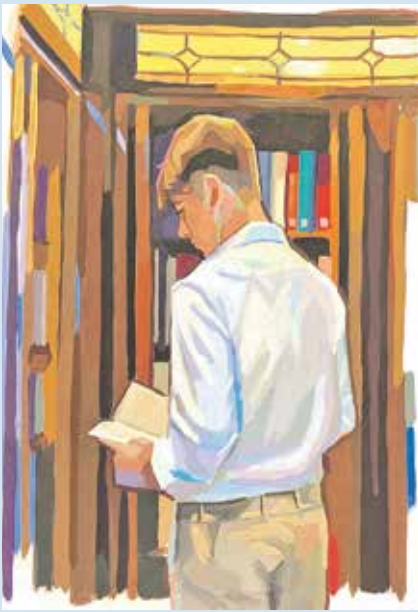


Section of Printed Fabric Design 'Tulip and Willow', 1875 By William Morris. Image: Birmingham Museums Trust.

Bringing your art to life?
CONTACT CUSTARD

custard
DESIGN MARKETING PRINT

01323 430303 instant@custard-design.co.uk



Sophie's summer secret auction

SOPHIE'S Postcard has made an incredible start with over 1,000 postcards donated for this summer's secret art auction in aid of the *Royal Marsden Cancer Charity*.

By **Miranda Pennington**, St Richard's Catholic College

Please help *St Richard's Catholic College* reach their fundraising target of £100,000 with the fourth secret postcard auction.

The auction will be on *eBay* with all proceeds going to charity. All are welcome to contribute.

This summer's secret auction is set to be an exciting one, with over 1,000 postcards already donated and still a month to go before the artwork deadline on 24th May 2024.

We will release a contributing artist list just before the auction goes live but can reveal that postcards have been generously donated by celebrities, Premiership football players, authors, illustrators, award winning painters and printmakers along with aspiring artists from the school and the general public.

Since 2018, *St Richard's Catholic College* has raised almost over £82,500 and auctioned over 3,000 original artworks for *The Royal*

Marsden Cancer Charity in memory of former pupil, Sophie Maria Taylor who loved art.

The deadline for the call for artwork is 24th May 2024. Artwork to be completed postcard sized, good quality paper or board, and signed on the back. See full details on the website. All artwork to be sent by 24th May 2024 to: **#sophiespostcard, St Richards Catholic College, Ashford Road, Bexhill on Sea TN40 1SE**

Postcards are uploaded as we receive them and you can see what has been submitted on our website **www.sophiespostcard.com**

Please follow *@strichardsart* on *X/Twitter* and *@sophiessecretpostcard* on *Instagram* for regular news

updates and use the hashtag *#sophiespostcard* to help promote the event on social media.

The school is also producing a catalogue of the auction which includes every artist and a photo of every postcard donation. This can be ordered via our kickstarter project. **www.kickstarter.com/projects/sophiespostcard/sophies-postcard-catalogue-2024**

Contact Miranda Pennington **sophiespostcard@strichardscc.com**

Thank you so much for your help and support of *The Royal Marsden Cancer Charity* and this very special fundraising event in memory of a dearly loved pupil, Sophie Maria Taylor (2004–2017).

All Things Textile

FIBRE FEST – All Things Textile returns for a sixth year to the **Enterprise Shopping Centre, Eastbourne** on Saturday 1st June.

By **Emily Sander**, Enterprise Shopping Centre

If you're interested in spinning, weaving, felting, textile art, knitting and more, this is the place to be! With suppliers, makers, workshops and demos, it will be a celebration of all things textile.

This year's exhibitors include, *Folkestone Harbour Yarn*, established in 2015 within the heart of Folkestone's Creative Quarter and just a stones throw from the Harbour. *Folkestone Harbour Yarn* is a dye studio committed to producing quality hand dyed yarns that are original, unique, sustainable and kind to the environment, whilst supporting British farmers and other small businesses.

If you're looking for Hand Dyed Art Yarns, Naturally Dyed Yarns, Kits, Patterns and Handmade Knitting/ Craft Accessories, then make sure to pay them a visit!

We're looking forward to welcoming Textiles Artist, Claire Buckley back to *Fibre Fest*. Claire makes an eclectic mix of embroidered and woven textiles inspired by gardens and the sea. She also sells a range of vintage haberdashery and fabrics.

Liz Padgham-Major, known as *The Accidental Stitcher*, is a regular at our craft events. She creates extraordinary hand embroidery, textured and colourful, intuitive and bold. Her work is 100% created by hand and each unique piece tells a narrative of colour, design and the natural world.

A key feature of *Fibre Fest* are the creative workshops which always produce some impressive results.

This year, Marilyn Willis will be running her very popular Sashiko Workshops offering an introduction to this Japanese mending technique. Have fun experimenting with a range of patterns and create your own denim patch. She will also be showing a range of hand embroidered gifts, using vintage fabrics and lace.

Weaver Kay Hilton has run some fantastic workshops at *Fibre Fest* and this June she will be back to teach you how to weave a miniature basket, using upcycled ghost fishing rope, sourced from our local beaches.



Kay Hilton.



Liz Padgham-Major.

Find out more here:
www.facebook.com/SussexCraftandDesignFair

Fibre Fest – All Things Textile
Saturday 1st June, 10am – 5pm.
Enterprise Shopping Centre
Station Parade
Eastbourne BN21 1BD

www.enterprise-centre.org



ENTERPRISE
 INDEPENDENT SHOPPING

(Please note, the event is held upstairs at the *Enterprise Centre*, access via stairs only)



Folkestone Harbour Yarn.



Ribbonreal.



Claire Graves Textiles.



Claire Buckley.



INDEPENDENT CINEMA, LIVE ENTERTAINMENT & THEATRE VENUE

What's on in May

FREE PARKING
THROUGHOUT HAILSHAM



15 Back To Black



15 The First Omen



U Migration



12A Bob Marley:
One Love



U Carry On Constable



15 The Book of
Clarence



12A Ghostbusters:
Frozen Empire



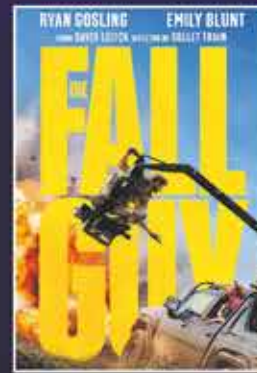
15 Wicked Little Letters



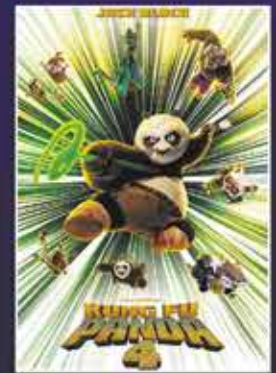
12A Ordinary Angels



12A Mary Poppins



12A The Fall Guy

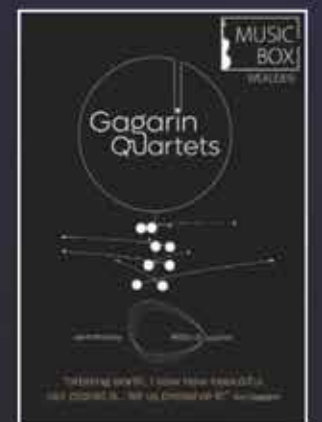
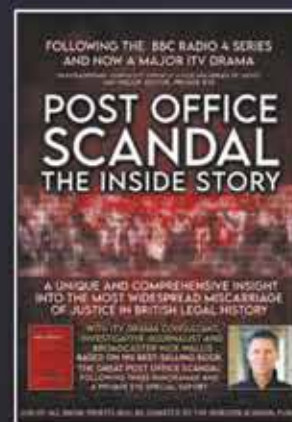


PG Kung Fu Panda 4

EVENT CINEMA



LIVE EVENTS



For full programme or to book:
www.hailshampavilion.co.uk



Find us on
Facebook

Reg. Charity No.1062538

GEORGE ST, HAILSHAM BN27 1AE

01323 841414

Richard Olyphant is at Gallery@42

PENNIE and Renee are most delighted to welcome Richard Olyphant's work to *Gallery@42*.

By **Gail McKay**

He has only been painting for six months, and already he's been courted by galleries across the South Coast.

Richard originally studied Law at *Kings College*, but through a series of health issues, he has changed his direction.

Married with one son, he lives along the coast in Hastings. His exhibition in *Gallery@42* starts 2nd May for two weeks where a selection of his vivid and joyful paintings can be seen.

Providing inspiration

His stunning paintings are simple in composition, yet amazingly complex when viewed up close.

His use of acrylics give a 3D effect that really need to be seen in person.

"I spend a lot of time preparing colours and playing with them."

He hopes his paintings can provide inspiration. *'Balloons Deflated'* speaks to those having a hard time, "What goes up, must come down."

Not every day is going to be your best, sometimes it will feel pretty crap."

Listen to that feeling, but don't let it be the only voice. Tomorrow is a new day, with new beginnings and opportunities. Let today be deflated, but tomorrow can be whatever you want it to be."

A new theme

Richard's own favourite is inspired by 'Space', a new theme for him. From a distance, it's a wonderful image of the universe, yet up close, the detail in every star and planet is intense.

Richard's work will be on display at *Gallery@42*, 2nd – 12th May. Thursday to Sunday. 12–6pm.

Gallery@42
42 South Street
Eastbourne BN21 4XB

07703 452554
galleryat42@gmail.com
www.galleryat42.co.uk





Andalucia - Flamenco
Thursday 2 May

RHT

ROYAL HIPPODROME THEATRE



The Foundations
Friday 3 May



The Ultimate Tribute Show
Saturday 4 May



A Night to Remember
Every Wednesday from 8 May



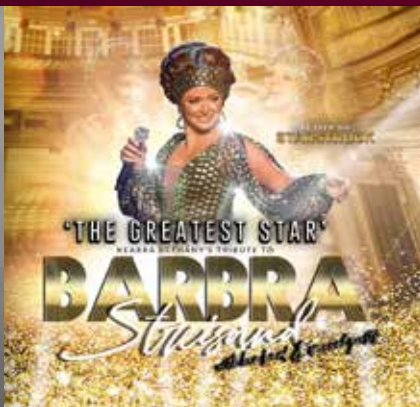
The Band of HM Royal Marines
Thursday 9 May



The Johnny Cash Road Show
Saturday 11 May



Tommy Blaize
Friday 17 May



The Greatest Star: Barbra Streisand
Saturday 18 May



La Voix
Sunday 19 May



Dizzy Lizzy
Friday 24 May



Flopz
Saturday 25 May



80s Burlesque Night
Sunday 26 May



Exciting Science
Thursday 30 May



Rhiannon
Friday 31 May

Box Office 01323 802020 | royalhippodrome.com
106-114 Seaside Road, Eastbourne, BN21 3PF



What's on

A SELECTION of the best of Eastbourne this month.

By **Gail McKay**

Markets

Community Wise Village Market
Ocklynge Road
Eastbourne BN21 1PY

Saturday 25th May, 10:00am–12:30pm.
Food, crafts, giftware plus bargain charity shop 'Wise Buys'.

East Dean Village Market

Every Wednesday.
10:00am–1:00pm outside.
10:30am–1:00pm inside.
Cafe open until 1:00pm.

Farmers and Street Market
Terminus Road (Between
Barclays and Halifax).

Every Wednesday and Sunday.
9:30am–4:00pm.

Comedy

Salt Water Comedy

Frontier Bar, Grove Road

Thursday 16th May
Headliner: *Jack Skipper*.
Tickets £7 at www.tickettailor.com

The Lamb Inn Comedy Night
Hosted by **Jo Neary**

25th May – *Jo Enright, Juliet Meyers, Dyball & Kerr*. Starts 7:30pm.
Tickets: £9–£15 plus booking fee.
www.wegotickets.com

Pub Quiz

Lamb Inn, 36 High Street, Old Town, Eastbourne BN21 1HH
01323 720545

2nd May and 16th May
Paul Elphick hosts. Booking Essential.
Max six people per team. £2 per person. Special Quiz menu includes a drink. Starts 8:00pm.

Alexander Arms

453 Seaside, Eastbourne
BN22 7SA
01323 721237

Every Tuesday at 8:00pm.
£2 per person – half the pot to the winners, half to charity.

The Prince Albert Pub
9 High Street
Eastbourne BN21 1HG
01323 727754

29th May. Starts 7:30pm.
Free food for all players.
Teams of 5 – £2 per player.

Live Music

Crown & Anchor
15–16 Marine Parade BN21 3DX

Friday 3rd May – Sherbert Fountains.
Saturday 4th May – TBC.
Friday 10th May – Bite the Bullet.
Saturday 11th May – The 501 Band.
Friday 17th May – Fat Charlie & The Southbound Train.

Saturday 18th May – Rewind 45.
Friday 24th May – Kevin Jones.
Saturday 25th May – Naked Bass.
Friday 31st May – The Remedy.

The Crown
22 Crown Street, Eastbourne
01323 724654

Disco People:
Saturday 5th May 2:00pm–12:00am
Adam Morton, Fergus, Gary Manley, Mick Fuller, Nickelle, Paul Hillyer, Rob Richards, Will Sumsuch
DJs in garden until 8pm, Bar in garden until 10:00pm.

General

Eastbourne Carnival

Saturday, 25th May
Fisherman's Green. 2:00pm.

Barty – A tale of a stolen bronze

WHEN a garden bronze is stolen from a Norfolk country house, and embarrassingly sold to a private collector in Hastings the hunt is on to find the thief.

By **Gail McKay**

Leading the search party is **Barty a chef, Lionel an antiques dealer, Mercy Penfold a journalist, Jack a young antiques dealer, and a dog called Clive!** Not to mention the police! A warm and humorous story for those who love food and antiques.

'Barty – A tale of a stolen bronze' is the first book in a series of three by James 'Bamboo' Braxton, one of the most well known 'Antiques' faces on British television.

Locals will adore the nods to local landmarks, characters and businesses, which paint a delightful sunny and welcoming Hastings and St Leonards.

I loved the scenes with Barty's meticulous food prep for his low key, high end restaurant as well as the lingering descriptions of the grand homes featured in the story.

JAMES BRAXTON



BARTY - A TALE OF A STOLEN BRONZE

Fans of cozy crime writers such as MC Beaton, Anthony Horowitz and Richard Osman will love this brilliantly plotted race to find the thieves of the garden sculpture. Some of James's quirky characters are straight out of Jeeves and Wooster.

Like Barty's food, the conclusion is tasteful and satisfying.

James has worked for the BBC since 2001 starting with *Bargain Hunt* in Paris. Since then James has filmed in Paris, Dublin, New York and every County of the UK on many shows including *Flog it*, *Put Your Money Where Your Mouth Is*, *Antiques Road Trip* and *Celebrity Antique Road Trip*.

He was recently invited to be a guest author at the *Ceylon Literary & Art Festival* in Sri Lanka.

For more information and to read a sample chapter, please visit: www.jamesbraxton.com/books





Finding the beauty in unusual objects

I HAVE known my dear friend Danny Bloomfield for many, many years with most of our time collaborating in our love for playing music.

By **Andy Thomas**

But a few weeks ago after popping in to see him at his home, I was completely blown away by seeing another string to his bow, if you forgive the pun....

He has been hard at work producing amazing three dimensional works of art and stunning photography which now adorn the walls of his home.

So I have taken the opportunity to sit him down and, with his art surrounding us, ask him to take me through his inspiration, his influences and more importantly, what made him start producing such brilliant work.

What made you start producing your work?

"It's difficult to answer this question without sounding pretentious but I have always been interested in modern art and have been dabbling with abstract paintings for as long as I can remember. This latest passion of mine started a few years ago

on a dog walk with my wife Julia. I stumbled upon a astounding piece of old metal on the beach at Normans Bay. We marvelled at how alluring this old sea aged and battered fragment had become. Julia asked, "Why don't you take it home and hang it on the wall?" Brilliant I thought, and the 'piece' was taken home and to this day is mounted on the wall behind the bed, a sort of post apocalyptic metal headboard. After this, I became quite enthused and I began looking at discarded items in a different way."

Are you formally trained as an artist or self-taught?

"My late father was an artist and subsequently an art teacher at a local school, so from an early age I was always surrounded by art and the process of creating it. Maybe some of that has rubbed off on me. However I don't really think you need to be trained to do what I do art wise. I am merely re-purposing and beautifying everyday objects, throwing some paint around until it looks nice. If a colour or a combination of colours I see in the day strikes

me as interesting I'll endeavour to photograph it and use the image to recreate the colour mood with paint and objects I have collected."

Who are your main artistic influences?

"A long term friend of mine Mr Paul Bartholomew is a local Artist and he opened up my eyes to Non Representational art. I like Mondrian, Rothko, Barbara Hepworth, that sort of thing. I like the type of art that inspires people to exclaim that their three year old could have done it. I've seen 'art' painted by a three year old and am yet to be impressed."

Tell me about your most and least preferred mediums.

"My favoured and possibly most prevalent work these days is to use rusty, weathered items and elevate them. Sometimes pieces are just simply found, mounted and displayed, on other occasions, a more mixed media approach is undertaken with salvaged items joining painted backgrounds to replicate a remembered mood, situation or weather condition."

Where do you find inspiration for your art?

"Everywhere. Old unused billboard stands, rusty metal roof sheeting, badly exposed and focused photographs, other people's art. Humans can't help but look for patterns and find structure in the information coming their way. My art is just an extension of this phenomenon."

When is your favourite time of day to create and why?

"Inspiration, or the right move can strike at any time. I'm lucky as my studio is just behind my kitchen and I can hop in for a moment or two any time of day. Most work seems to take place in the early evening when I've recovered from my day job and before the fatigue of the day could stifle my creativity."

How do you know when you have finished a piece of art?

"My art doesn't take long to physically produce, the work is in the idea, the concept, the vision. Sometimes knowing when to finish is the hardest part, that last stroke of the paintbrush, the last squeeze on the aerosol paint, those extra few months left out in the rain. It's a real struggle."

How do you see your artist career progressing, a show maybe, is it for sale?

"Featuring in this paper is my first show and hopefully not my last. And yes, all my art is for sale."

Hello Spring!

Planting season is in full swing. We have everything you need to brighten up your garden!

SUMMER FLOWERING BULBS

Get prepared for those warmer months ahead and get planting. You won't regret it when your garden is bursting with colour this Summer. Huge range available in store.



GROW YOUR OWN

It's peak veggie growing season. We're now fully stocked with vegetable plants, seeds and all the tools to equip you with growing your crops

BEDDING PLANTS & TREES

Spring brings an abundance of bedding plants, perfect for creating your hanging baskets or containers. We stock a wide range of bedding varieties along with ready-made hanging baskets. Our European tree selection is popular and will enhance any outdoor space.



Enjoy 2 for 1
Breakfast at the
Bakehouse Kitchen!

MON - FRI 9AM - 11 AM



NEW IN!

EQUESTRIAN FEED & BEDDING

We have just launched a new equestrian feed & bedding shop. Fully stocked with all your horse's favourite brands. Deliveries are also available on request.

Stone Cross Shop
Dittons Road, Stone Cross
Pevensey, BN24 5ET
01323 488188



www.upcountrystorehouse.com



You feed the family, we'll feed the lawn

We provide a premium lawn care experience.

We seed them, feed them, even control
the weeds. So, you don't have to.

For a FREE lawn analysis visit
[greenthumb.co.uk](https://www.greenthumb.co.uk) or contact our local team.

GreenThumb The Weald

Call 01892 838045 Email weald@greenthumb.co.uk

Coming soon on

itv1

Alan Titchmarsh's
GARDENING CLUB

Brought to you by

GreenThumb
LAWN TREATMENT SERVICE



Pictured above, sea campion, in the Driftwood beach garden.

Green and pleasant

AT last, summer is on its way, as proven by our bulbs fading and our herbaceous borders growing in leaps and bounds. We can begin planting out summer bedding and take softwood cuttings. There is such a huge variety of plug plants available that it's not easy to know where to start, but the easiest to look after are tender geraniums, also called pelargoniums. They come in either trailing or upright varieties and will withstand a certain degree of neglect, which plants like lobelia just won't take. If you're putting bedding plants or hanging baskets in the shade, busy lizzies are perfect, especially the white flowered ones, as they lighten up and thrive in darker corners.

By **Geoff Stonebanks**

It's also time to get back into the lawn mowing regime, if you have one, as it will be loving the warmer temperatures this month brings. Take care and watch out for any late frosts forecast and take last minute steps to protect your tender plants. Frost can affect many plants, and is particularly damaging to tender new growth and blossom in the spring. The risks of frost damage can be reduced by taking some simple steps to protect the plants in your garden like covering overnight with a fleece.

Summer visits to Driftwood

May sees me swing full-time into getting the garden ready for visitors at *Driftwood* from 1st June through until the 31st July. As in 2023, all garden visits will need to be pre-booked by either calling **01323 899296** or emailing visitdriftwood@gmail.com. I'm very pleased to say that almost 200 have already booked to visit. Several local gardening societies or Women's Institute groups have made bookings for visits too, so it promises to be a busy two months. There will be eight local artists selling their wares, all beautifully displayed throughout the

garden. Full details on the garden website www.driftwoodbysea.co.uk

Chelsea Chop

This month sees the *Chelsea Flower Show* take place and May is traditionally the time to deliver the "Chelsea Chop", so called because it's often done around the time of the event. It is great process for stopping some plants getting too big and leggy, and with others, staggering flowering times. If you haven't used the *Chelsea Chop* before, it has two main purposes.

Firstly, it makes the plant more compact, which makes it useful to use on plants with a sprawling habit, such as *Nepeta*. It will reduce the length of its flowering stems so it's shorter and less top heavy. It will also make the plant bush more, which means it is ideal for plants which have a tendency to become leggy later in the summer.

Secondly, using the *Chelsea Chop*, which is in effect cutting the plant back, also delays flowering, because the plant needs to grow on more before it can flower. This means you can have some plants, of the same type, flowering later to stagger the flowering period.

National Garden Scheme

This month sees more gardens opening up for the scheme across the county. Just along the coast, in Seaford, readers can find *Lavender Cottage*, in Steyne Road opening on Wednesday 22nd May between 1.30pm and 5pm. Opening up for a combined admission, at the same time, is *Cupani garden*, located at 8 Sandgate Close in the town. You will need to book online to visit and the combined entry, including a home-made tea, is £12. Please phone **01323 899452** or email sweetpeasa52@gmail.com for information & booking.

Lavender Cottage has a flint walled front garden with cottage, coastal and kitchen gardens and the back has a terraced bank planted with trees, shrubs and lavenders. Climb the steps to the balcony and enjoy an iconic view of Seaford Head. *Cupani* is a tranquil haven with a delightful mix of trees, shrubs and perennial border, a courtyard garden, gazebo, summerhouse, water features, sweet pea obelisks and a huge range of plants.

Along the coast in the other direction, 96 Ashford Road in Hastings will open on Saturdays the 11th, 18th and 25th of the month. The garden will be open from 1.30pm to 4.30pm, with entry £3. It is a small (100ft x 52ft) Japanese inspired front and back garden, full of interesting planting with many acers, azaleas and bamboos. See over 100 different hosta, many miniature ones and step inside an attractive Japanese Tea House. Full details on the three gardens can be found at www.ngs.org.uk

Hector

This year has been a worrying time dealing with our tortoise, Hector! He was so very early waking up from his hibernation due to a very warm February. He's now out in the garden and seems to be his old self again and slowly starting to enjoy his food. He loves interacting with visitors and looks forward to welcoming them back this summer.

Read more of Geoff's garden at: www.driftwoodbysea.co.uk

Geoff is a multi-award-winning garden owner, garden writer & broadcaster. *Driftwood* has appeared twice on BBC2 *Gardeners' World* and was a finalist in *Gardeners' World Magazine Best Small Space*. See the amazing 5-star reviews on TripAdvisor. Read all about Geoff's work for the community, appointment as a Coronation Champion and trips to Buckingham Palace including two Royal Garden Parties, in 2018 and 2023. Read the many published features on the garden in national, local and worldwide media, including TV.

Leading the way in providing an
AFFORDABLE PROFESSIONAL service



WESTMINSTER LAW

Wills ~ Estate Planning ~ Probate



If you are over 60 it will cost you only **£95*** for us to prepare your Will.

We are also Lasting Power of Attorney Specialists - only **£95*** each LPA if instructed during the Will appointment.

Our prices include free home visits*, VAT and Inheritance Tax advice.

Call us now for a no obligation chat on

01323 679411

www.westminster-law.co.uk email: ng@westminster-law.co.uk
Westminster Law Eastbourne Ltd. Reg. Office: Wellesley House, 204 London Road, Waterlooville, PO77AN

*These very special rates are only available if you are over 60 years old.
Our normal price for a standard single Will is £150, or £250 for a couple.

*Minimum spend for a free home visit is £95.